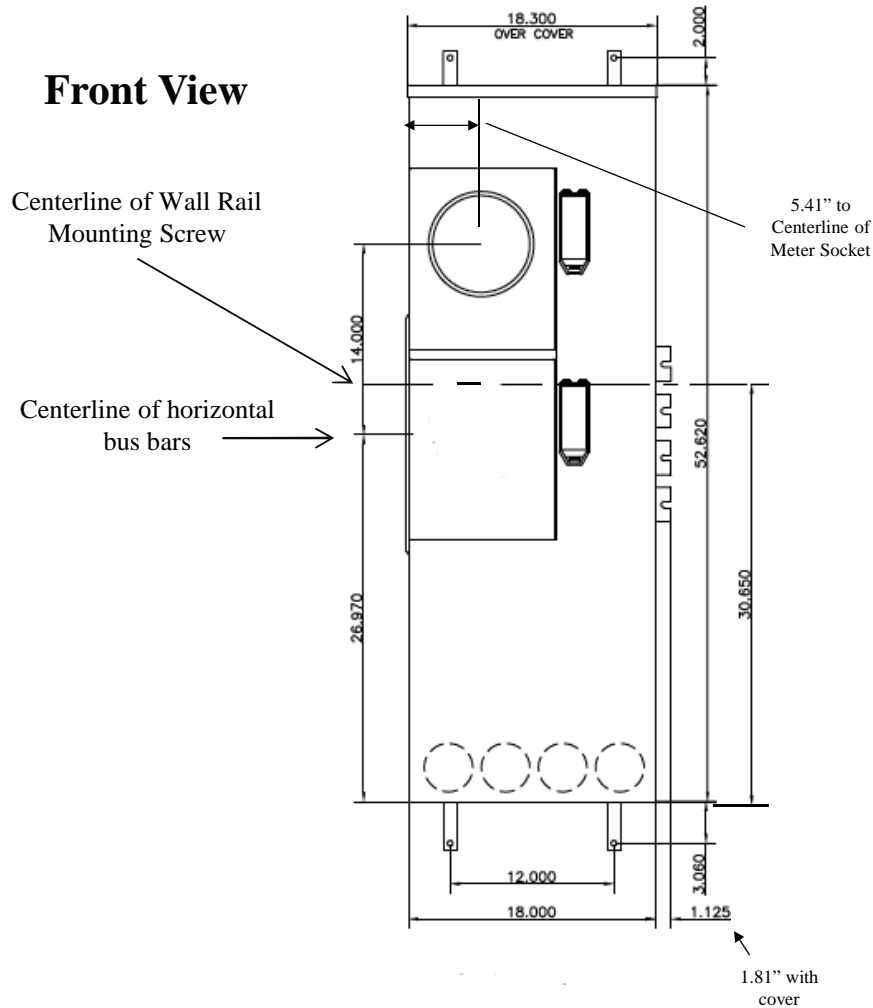


## Front View



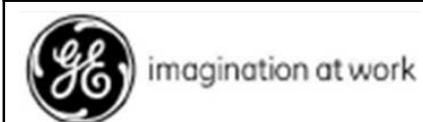
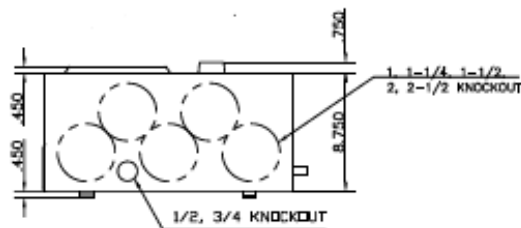
This unit includes factory installed 7<sup>th</sup> jaw kit  
(7 terminal unit)

This unit has lever bypass type meter sockets

This unit has (1) 400A meter socket but it cannot feed a single 400A load. Allows up to (2) 200A tenant main breakers to be added (not included)

Top view has blank end walls (no knockouts)

## Bottom View



METER MOD III-3PH 1200A HORIZONTAL BUSSING  
(1)400A RINGLESS SOCKETS-LEVER BYPASS-N3R ENCL

REF NO	CAT NO	DWG DATE	REV #
96-1988	TMPR312140TR	1/8/2015	01