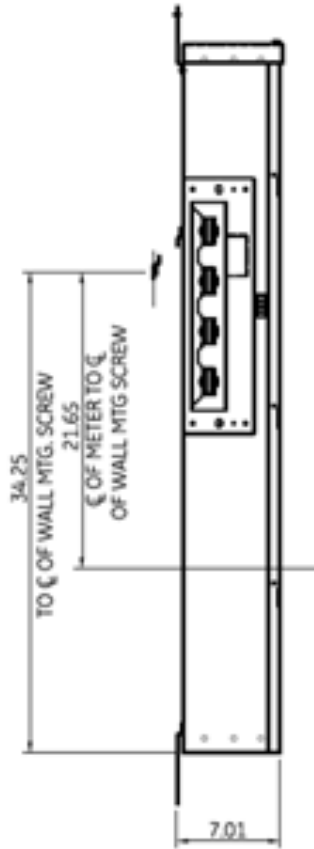
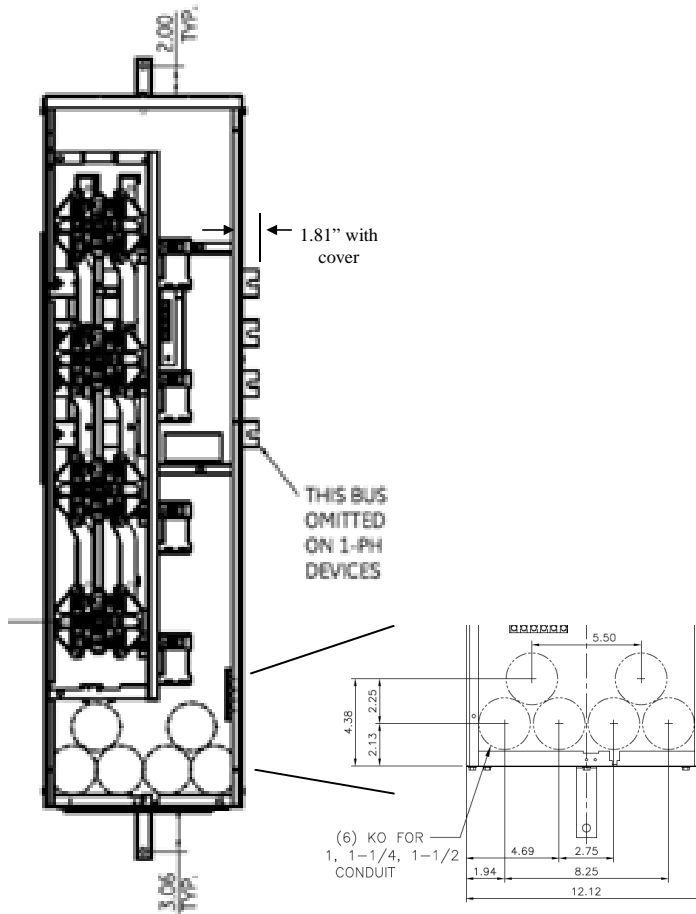


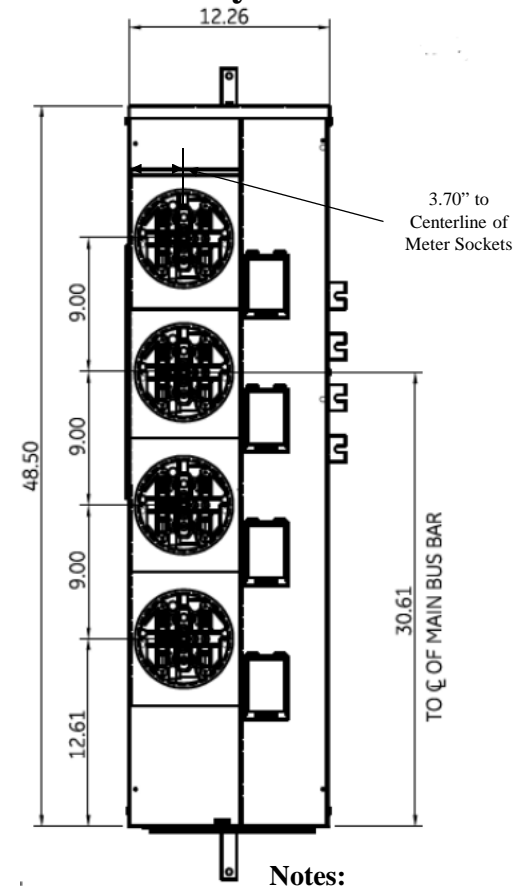
**Side View**



**Front View**



**Front Layout View**



**Notes:**

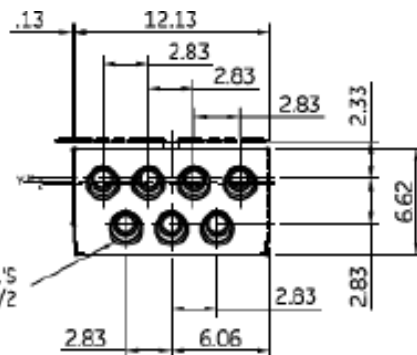
These are MEG approved units have an additional cotter pin that keeps the meter socket from detaching from the base

Top view has blank end walls (no knockouts)

**Bottom View**

Z = C OF 1-1/2" RING  
 Y = C OF 1-1/4" RING  
 X = C OF 3/4" & 1" RING

TANGENTIAL K.O.'S  
 3/4, 1, 1-1/4, 1-1/2



imagination at work

METER MOD III – 1PH 800A HORIZONTAL BUSSING  
 (4) 125A RINGLESS SOCKETS – N3R ENCLOSURE

REF NO	CAT NO	DWG DATE	REV #
96-4356	TMPR8412RF	1/8/2015	01