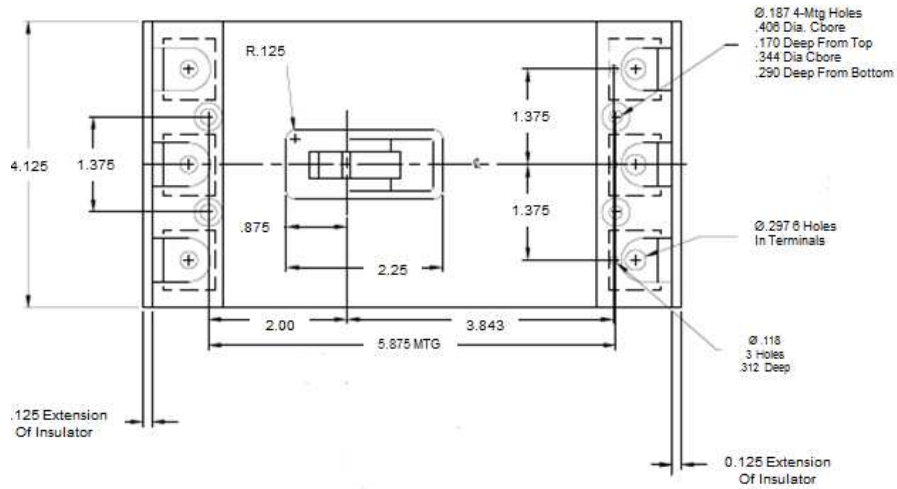
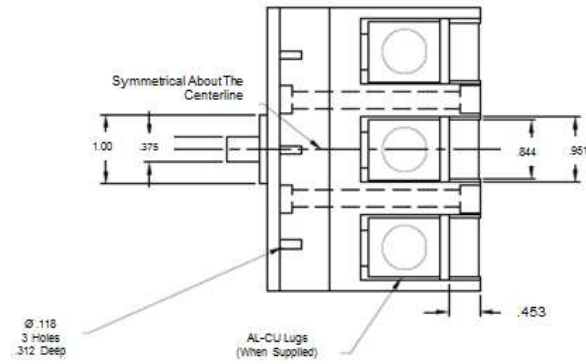


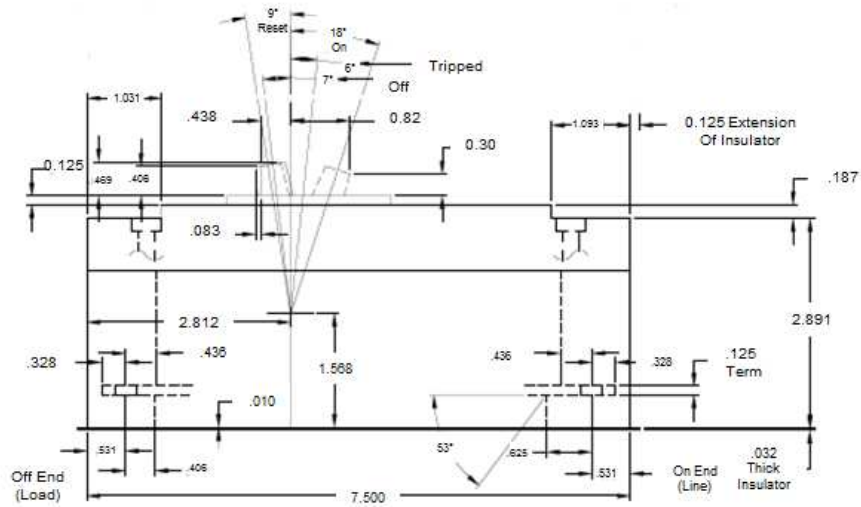
## Front View



## Top View



## Side View



Breaker Amps	Load Side Wire Range Size
70A	"ON" End -(1) # 6 - 4/0 (AL or CU) "OFF" End -(1) # 6 - 1/0 (AL or CU)
80A	"ON" End -(1) # 6 - 4/0 (AL or CU) "OFF" End -(1) # 6 - 1/0 (AL or CU)
90A	"ON" End -(1) # 6 - 4/0 (AL or CU) "OFF" End -(1) # 6 - 1/0 (AL or CU)



imagination at work

90A 3PH TMQD BREAKER 100K @ 208Y/120

REF NO	CAT NO	DWG DATE	REV #
96-2228	TMQD32090	03/20/2015	01