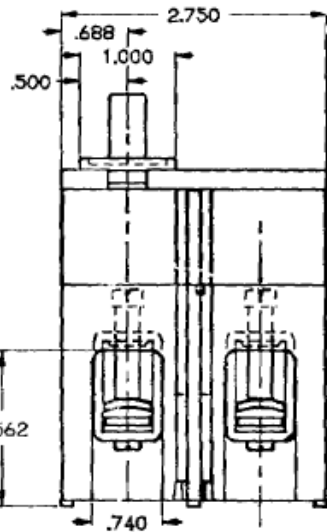
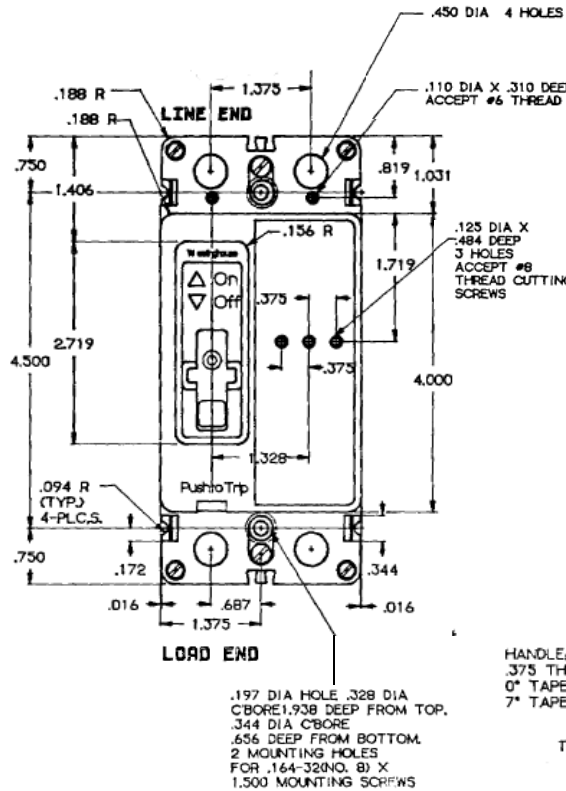


Top View

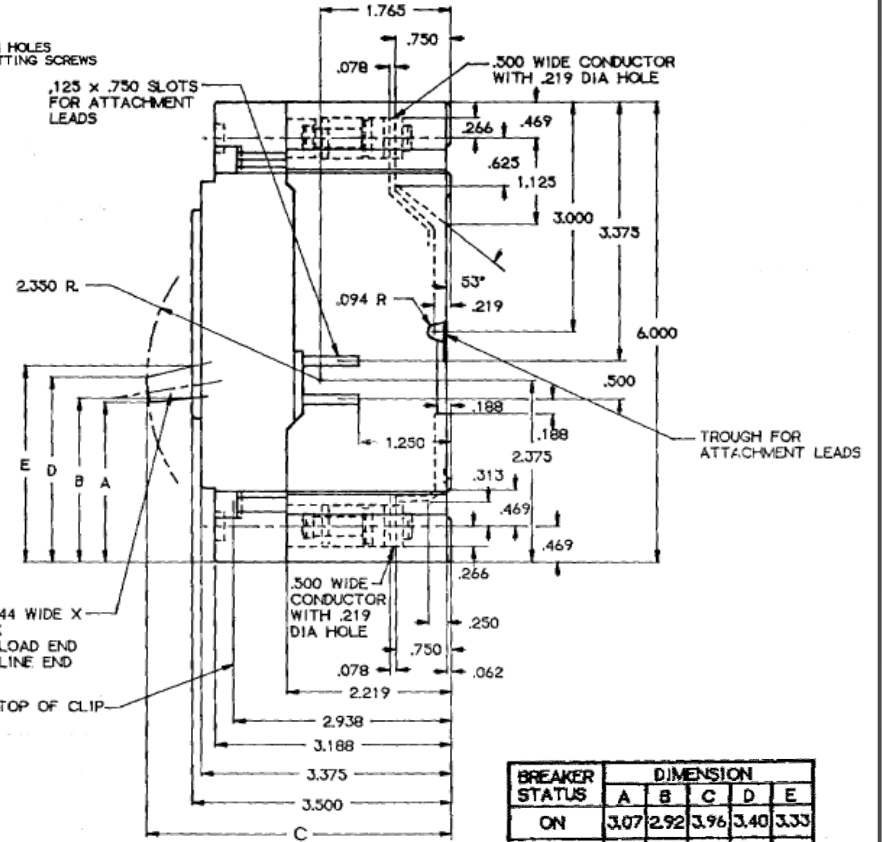


Bottom View

Front View



Side View



Breaker Amps	Load Side Wire Range Size
175A	(1) #4 - 4/0 (AL/CU)*

*Order part # TMQV225L2 to extend the load wire size range up to 300MCM. This kit includes a terminal shield

MM suffix provides mounting hardware for Residential Meter stacks. Hardware comes in separate bag in the field



imagination at work

175A 2P TMQV BREAKER 100K @ 120/240V FOR USE WITH GE METER STACKS -200A & 225A SOCKETS

REF NO	CAT NO	DWG DATE	REV #
1490D62	TMQV22175MM	11/05/2015	01