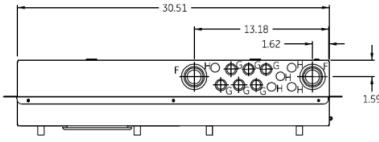
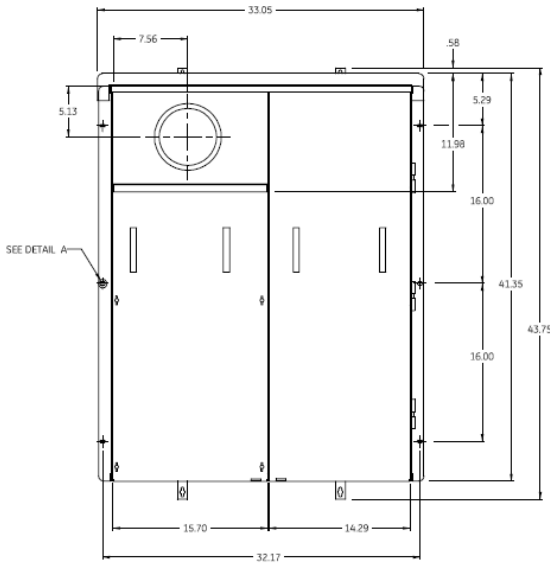


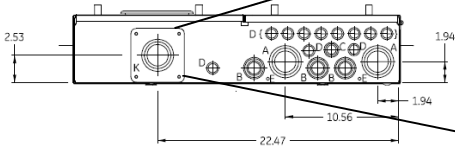
### Top View



### Front View



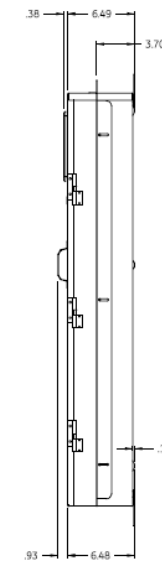
### Bottom View



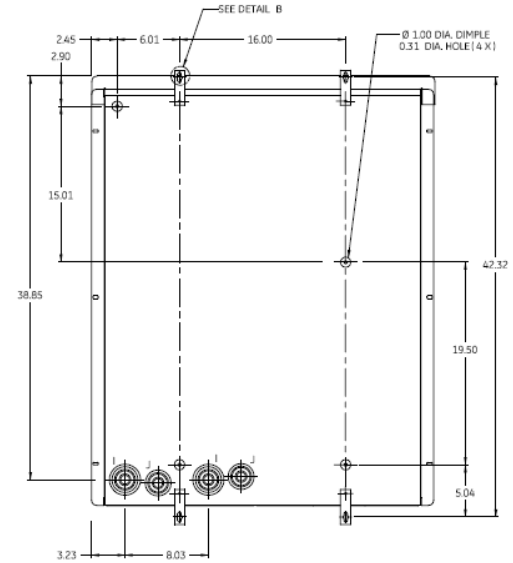
SYMBOL	SIZE	QTY
A	1 1/2 x 2 x 2 1/2 KO	2
B	3/4 x 1 x 1 1/4 x 1 1/2 KO	3
C	1/2 x 3/4 x 1 KO	1
D	1/2 x 3/4 KO	11
E	9/32 KO	2
F	1 x 1 1/4 x 1 1/2 x 2 KO	2
G	1/2 x 3/4 KO	6
H	1/2 KO	5
I	1/2 x 3/4 x 1 1/4 x 1 1/2 x 2 x 2 1/2 KO	2
J	1/2 x 3/4 x 1 1/4 x 1 1/2 x 2 KO	2
K	2 x 2 1/2 x 3 KO	1

Note : All Dimensions have ±0.125 Tolerance

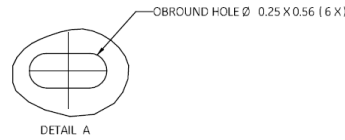
### Side View



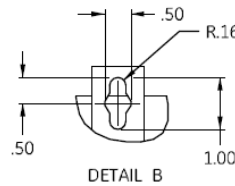
### Back View



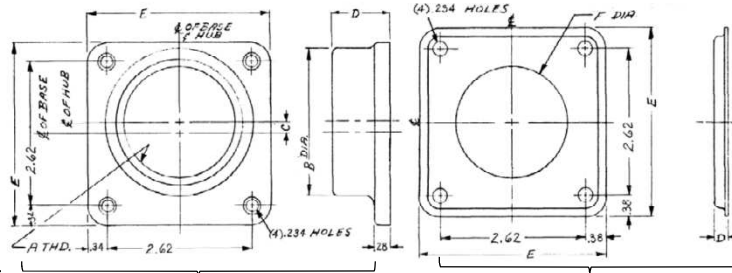
### Detail A



### Detail B



### Hub Dimensions



### Notes

Utility main breaker (THQMV) factory installed. Optional secondary main can be field installed

### Main Wire Size Terminals

1/2" Studs Provisions for UL Listed One or Two Hole NEMA Mounting Terminals  
 Compression Terminals Limited to 800 KCMIL Single Conductor, HOMAC Series AL-NTN, AL-TN or Equivalent.  
 Compression Terminals Limited to 400 KCMIL for Stacking Lugs, HOMAC Series ASL-NTN or Equivalent.  
 Pressure Terminals Limited to 1000 KCMIL Single Conductor, ILSCO Type TA or Equivalent.  
 Pressure Terminals Limited to 350 KCMIL Single Conductor, ILSCO Type AU or Equivalent.

### Available Hubs

Cat#	Mod#	A-THD	B-DIA	C	D	E
TC75	2	"3/4-14"	1.31	0.81	1.03	3.31
TC100	2	"1-11 1/2"	1.53	0.69	1.03	3.31
TC125	2	"1 1/4-11 1/2"	1.88	0.53	1.03	3.31
TC150	2	"1 1/2"-11 1/2"	2.12	0.42	1.03	3.31
TC200	2	"2-11 1/2"	2.62	0.2	1.03	3.31
TC250	2	"2 1/2-8"	3.19	NONE	1.22	3.31
TCCP Closing Cap	1	NONE	NONE	NONE	0.25	3.38



imagination at work

Main Breaker Dual THQMV - Ring - 400A - 24/42 Circuits - N3R Encl - SBS-Surface/Convertible Front-UG Incoming Feed-Link Bypass-EUSERC

CAT NO

DWG DATE

REV #

TSDA2440UC42

6/4/2015

01