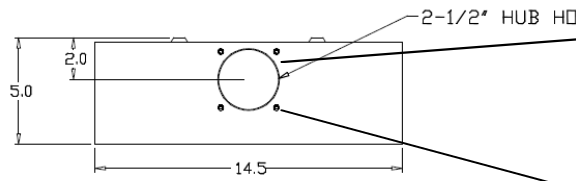
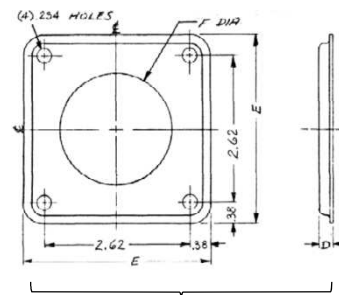
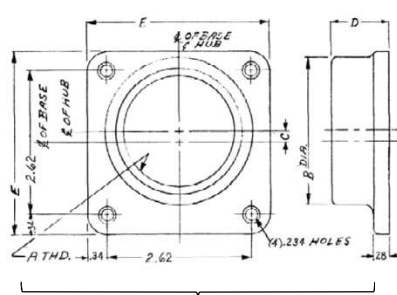


### Top View



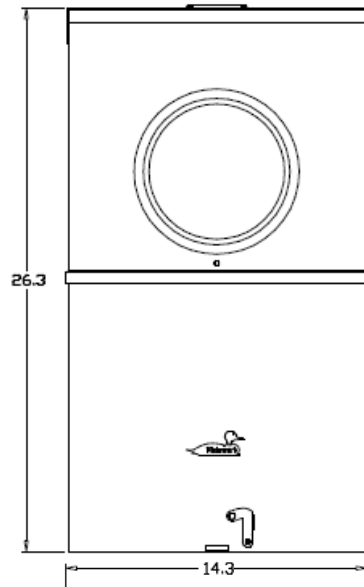
### Hub Dimensions



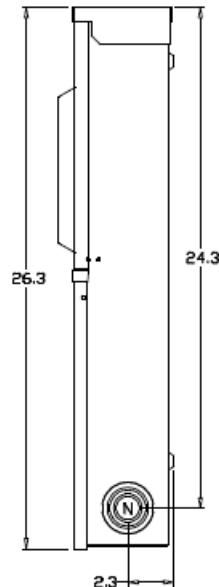
### Available Hubs

Cat#	Mod#	A-THD	B-DIA	C	D	E
TC75	2	"3/4-14"	1.31	0.81	1.03	3.31
TC100	2	"1 - 11 1/2"	1.53	0.69	1.03	3.31
TC125	2	"1 1/4 - 11 1/2"	1.88	0.53	1.03	3.31
TC150	2	"1 1/2 - 11 1/2"	2.12	0.42	1.03	3.31
TC200	2	"2 - 11 1/2"	2.62	0.2	1.03	3.31
TC250	2	"2 1/2 - 8"	3.19	NONE	1.22	3.31
TCCP Closing Cap	1	NONE	NONE	NONE	0.25	3.38

### Front View

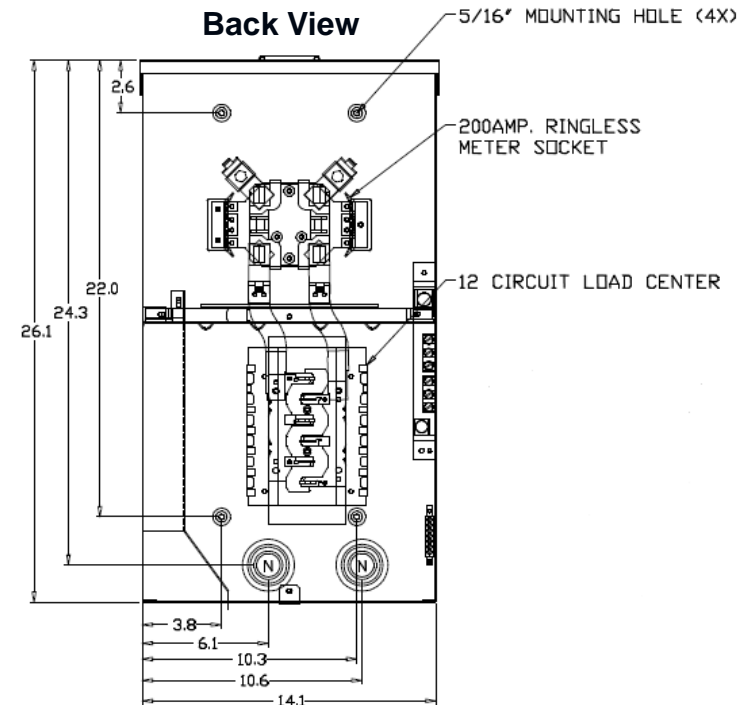


### Hub Side View

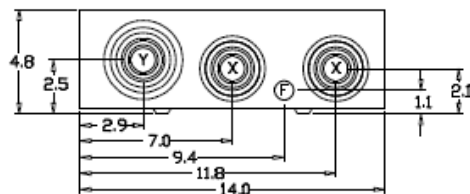


### Closing Cap

### Back View



### Bottom View



### Main Wire Size

(1) 1/0 - 250MCM (AL/CU)

### Notes

Listed for SE rating only. 6 circuits Max

#### KO TABLE:

N=	1/2", 3/4", 1", 1-1/4", 1-1/2", 2"
X=	1/2", 3/4", 1", 1-1/4", 1-1/2", 2", 2-1/2"
F=	1/2"
Y=	1-1/4", 1-1/2", 2", 2-1/2", 3"



imagination at work

Main Lug Only – Ringless - 200A 10K – SE Only - 6 Ckt Max - N3R  
Encl Surface Front-UG/OH Incoming Feed-UL Listing- Aluminum

CAT NO

DWG DATE

REV #

TSLR1220CSAL

6/4/2015

01