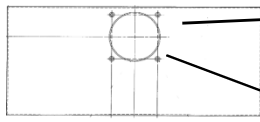
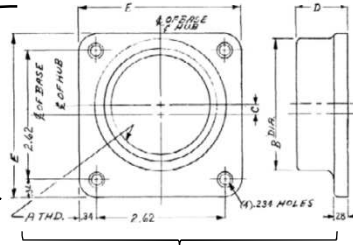


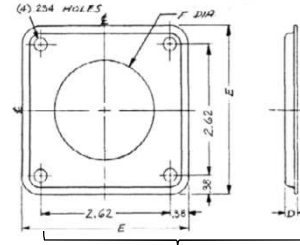
**Top View**



**Hub Dimensions**



Hub

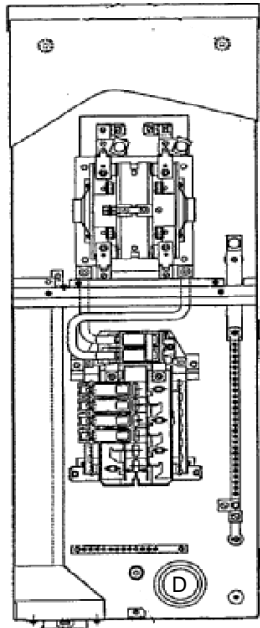


Closing Cap

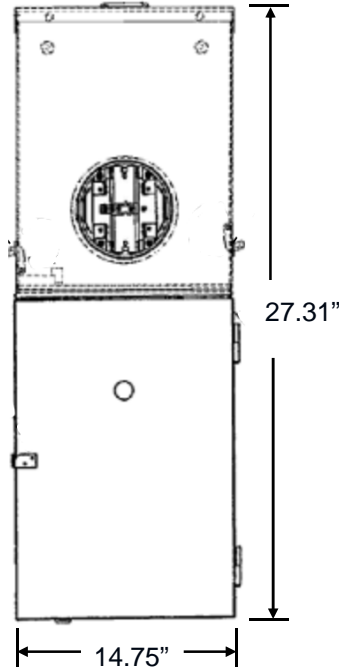
**Available Hubs**

Cat#	Mod#	A-THD	B-DIA	C	D	E
TC75	2	"3/4-14"	1.31	0.81	1.03	3.31
TC100	2	"1-11 1/2"	1.53	0.69	1.03	3.31
TC125	2	"1 1/4-11 1/2"	1.88	0.53	1.03	3.31
TC150	2	"1 1/2-11 1/2"	2.12	0.42	1.03	3.31
TC200	2	"2-11 1/2"	2.62	0.2	1.03	3.31
TC250	2	"2 1/2-8"	3.19	NONE	1.22	3.31
TCCP Closing Cap	1	NONE	NONE	NONE	0.25	3.38

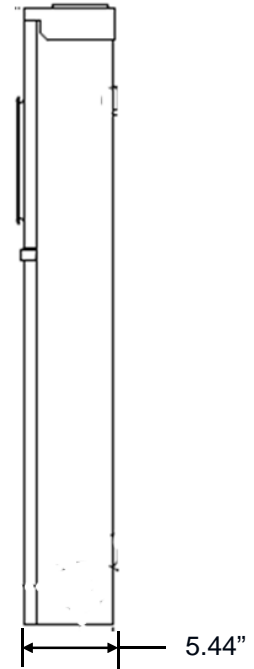
**Front View**



**Front Layout View**



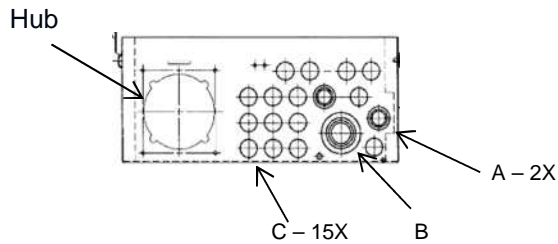
**Side View**



**Main Wire Size**

(1) 1/0 - 350(Al/Cu)

**Bottom View**



**Knockouts**

- A - 3/8 x 1/2 x 3/4"
- B - 1 x 1 1/4 x 1 1/2"
- C - 1/2"
- Hub - 1 1/2" x 2 x 2 1/2"



imagination at work

Main Breaker THHQL - Ringless - 125A 22K- 12/24 Circuits - N3R Encl Surface Front - UG/OH Incoming Feed - Xcel Colorado - Lever Bypass

CAT NO	DWG DATE	REV #
TSMB1212CSCU	09/16/2015	01