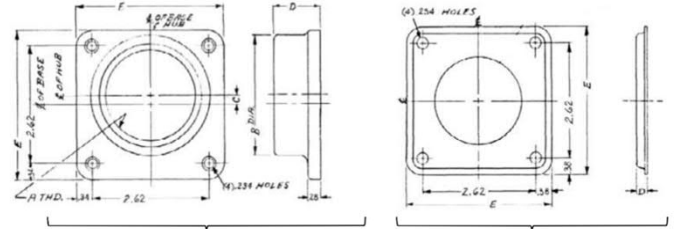


Hub Dimensions



Hub Closing Cap

Available Hubs

Cat#	Mod#	A-THD	B-DIA	C	D	E
TC75	2	"¾-14"	1.31	0.81	1.03	3.31
TC100	2	"1-11 ½"	1.53	0.69	1.03	3.31
TC125	2	"1 ½-11 ½"	1.88	0.53	1.03	3.31
TC150	2	"1 ¾-11 ½"	2.12	0.42	1.03	3.31
TC200	2	"2-11 ½"	2.62	0.2	1.03	3.31
TC250	2	"2 ½-8"	3.19	NONE	1.22	3.31
TCCP Closing Cap	1	NONE	NONE	NONE	0.25	3.38

KNOCKOUT TABLE:

A = 1 1/4" - 1 1/2" - 2" - 2 1/2" - 3" KO
B = 1/2" - 3/4" - 1" - 1 1/4" - 1 1/2" - 2" - 2 1/2" KO (2X)
C = 1/4" DRIP HOLE
D = 1/2" KO
E = 9/32" KO

WIRE RANGE TABLE:

CONNECTOR	COPPER		ALUMINUM	
	SOLID	STRAND	SOLID	STRAND
LINE METER SOCKET	-----	1/0-250	-----	1/0-250
LOAD-NONE	-----	-----	-----	-----
NEUTRAL A	-----	6-250	-----	6-250
NEUTRAL B	14-8	14-1/0	12-8	12-1/0
NEUTRAL C	-----	2-250	-----	2-250



Main Breaker THQMV - Ringless - 200A 22K - 20/40 Circuits - N3R Encl - Top/Bottom - Surface Front - UG/OH Incoming Feed - MEG Listed

CAT NO	DWG DATE	REV #
TSMR2020CSCUFMG	8/28/2020	02