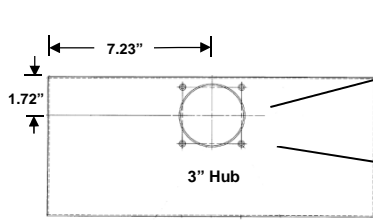
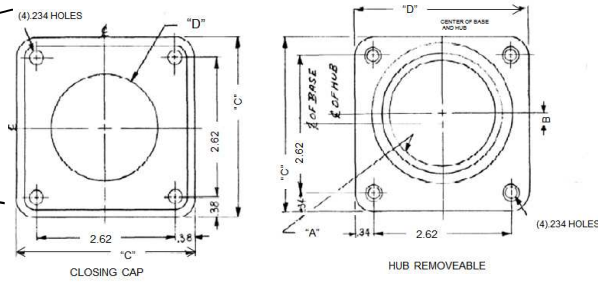


Top View



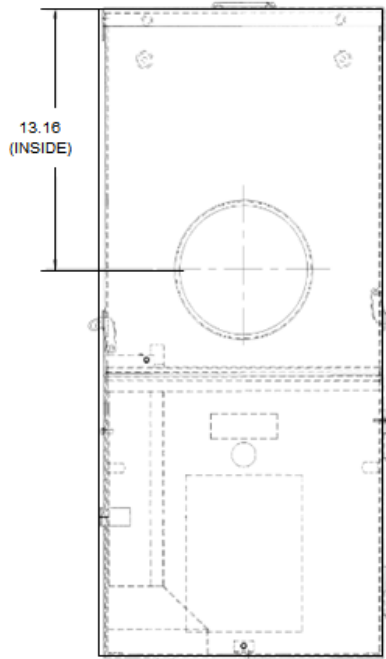
3" Hub Dimensions



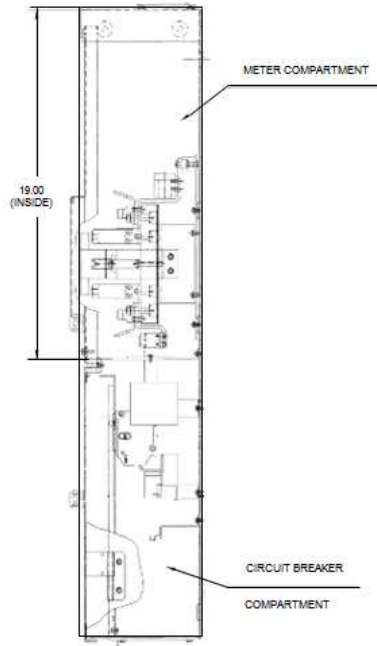
Available 3" Hubs

CAT. No.	MOD. No.	"A"-THD.	"C"	"E"	"F"	
TC 75	2	1/4 - 14	.81	3.31	NONE	FOR RAINTIGHT DEVICES WITH CAT. NO. ENDING IN RH
TC 100	2	1 - 11 1/4	.89			
TC 125	2	1 1/4 - 11 1/4	.53			
TC 150	2	1 1/4 - 11 1/4	.42			
TC 200	2	2 - 11 1/4	.20			
TC 250	2	2 1/4 - 8	NONE			
TCOP CLOSING CAP	1	NONE	NONE	3.38		
TCOP15 BUSHING PLATE	1	NONE	NONE	3.38	2000	FOR UNDERGROUND METER SOCKET LOAD CENTERS
TCOP20 BUSHING PLATE	1	NONE	NONE	3.38	2500	

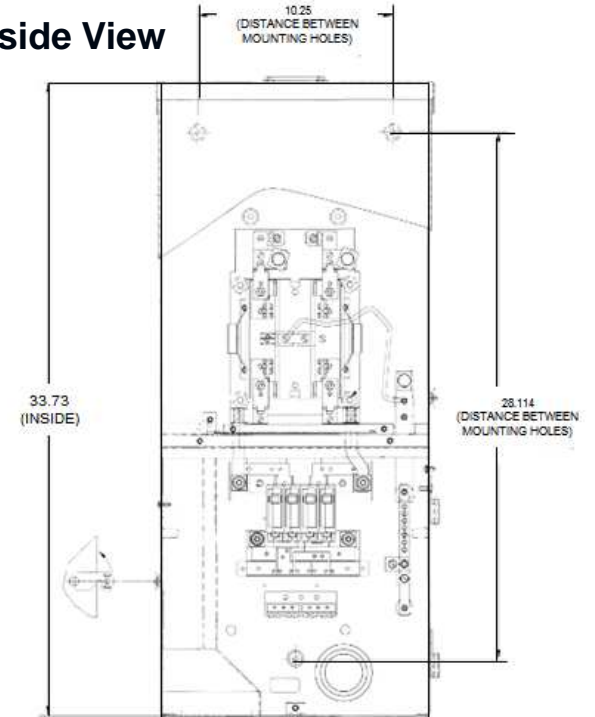
Front View



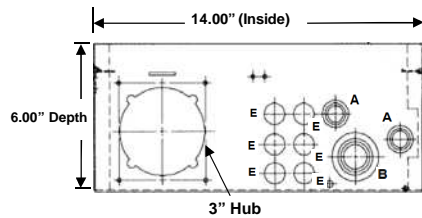
Side View



Inside View



Bottom View



KNOCKOUT LEGEND

Letter	Size of KO
A	3/8" x 1/2" x 3/4" KO
B	1" x 1 & 1/4" x 1 & 1/2" KO
E	1/2" KO
J	1 1/2" x 2" x 2 1/2" KO

Main Wire Size

(1) 3/0 - 350MCM (Al/Cu)



imagination at work

Main Breaker THQMV - Ringless - 200A 22K - 4/8 Circuits - N3R Encl - Surface Front - UG/OH Incoming Feed - Horn Bypass - XCEL Listed

CAT NO

DWG DATE

REV #

TSMR420CSCU

7/1/2015

01