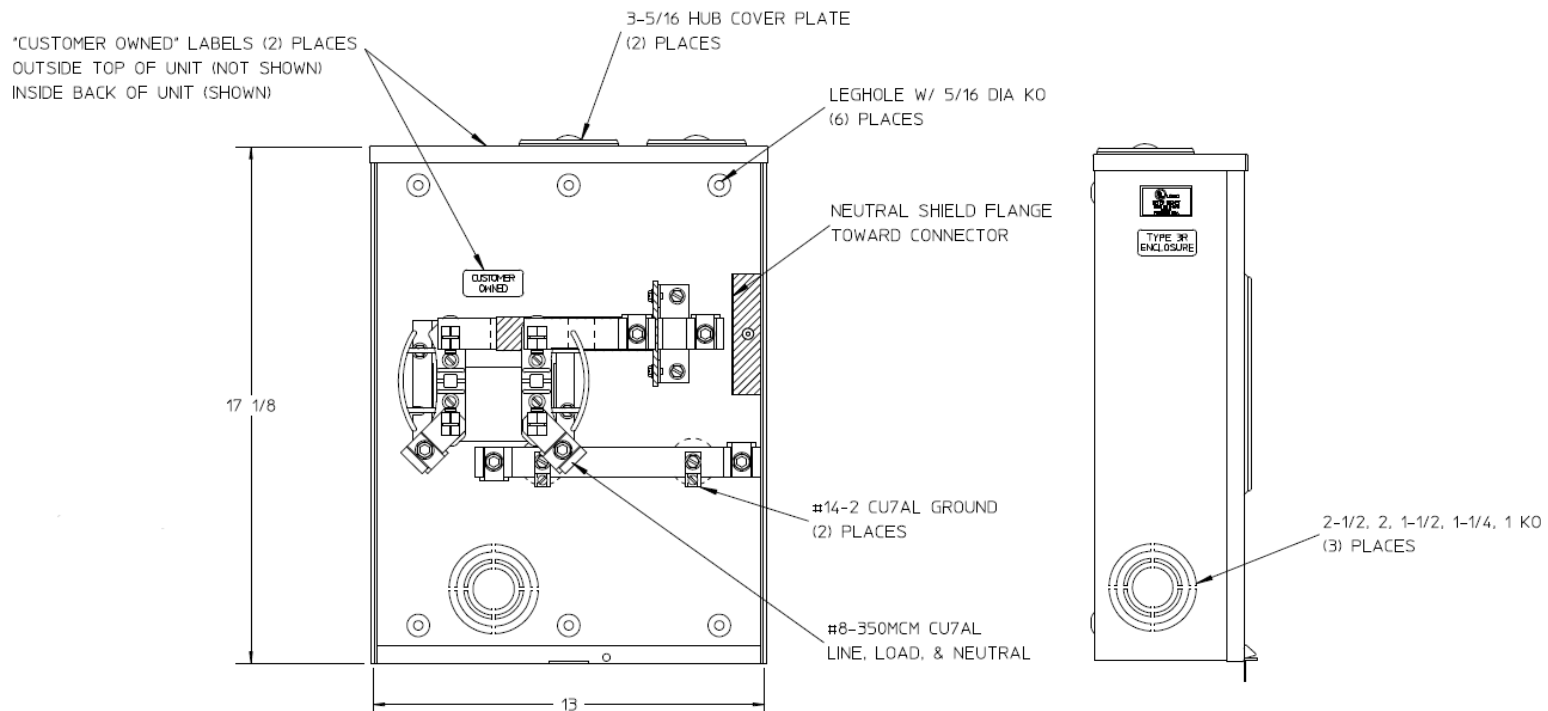


Front View

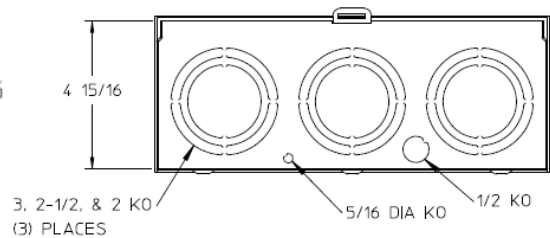

Side View



Notes

- 1) 200 AMP CONTINUOUS,
600 VAC, 1 PHASE, 3 WIRE
- 2) CABINET: 16 GA GALVANIZED STEEL
- 3) FINISH: GRAY
- 4) INHIBITOR SUPPLIED ON CONNECTORS
- 5) TEMPORARY CARDBOARD METER OPENING COVER PROVIDED
- 6) MIDWEST LABEL ATTACHED TO THE END OF THE CARTON
- 7) MIDWEST LOGO LOCATED IN THE LOWER LEFT-HAND CORNER OF THE FRONT

Bottom View

METER SOCKET - (1) 200A 600V 1P3W N3R G90
(2) HUB COVER PLATE SIDE 4-TERMINAL SIDE WIRED

CAT NO	DWG DATE	REV #
U92197CCCPLMEP	02/10/2016	01