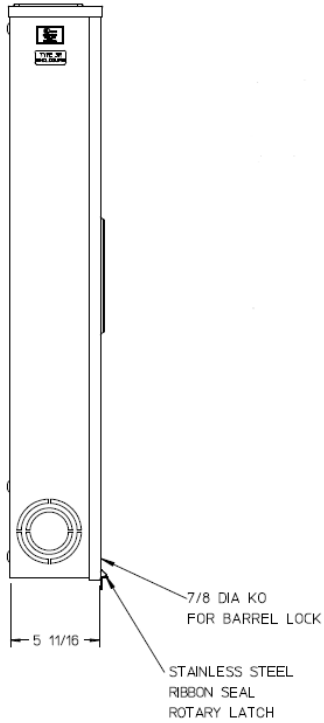
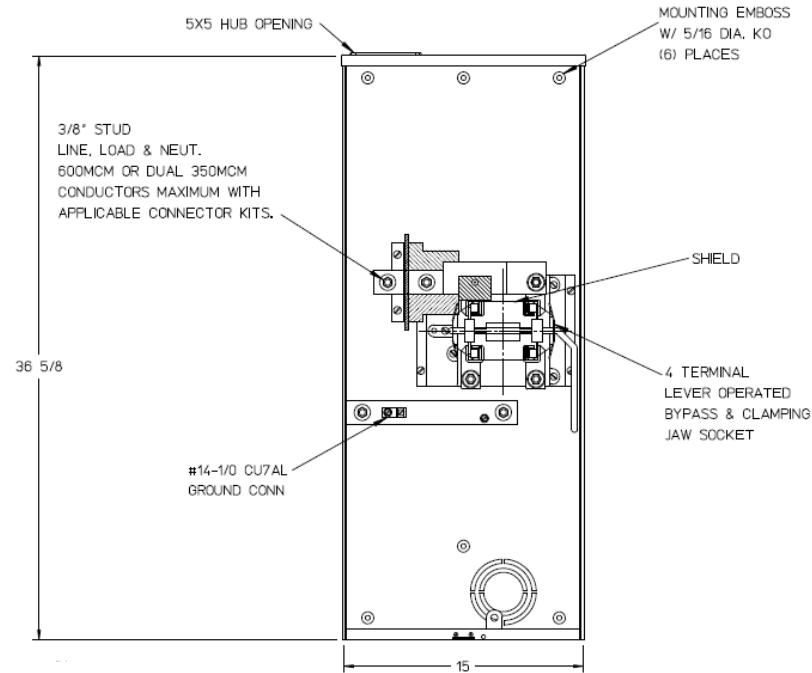


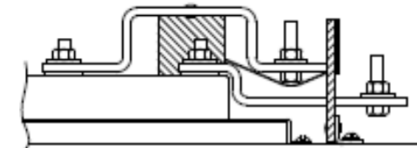
Left Side View



Front View Interior



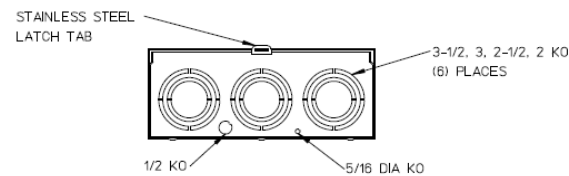
Line Bus Detail



Notes

- 1) FINISH: NATURAL
- 2) CABINET: .080 ALUMINUM
- 3) 320 AMP CONTINUOUS
600 VAC, 1 PHASE, 3-WIRE
320 AMP BYPASS
- 4) FOR BROOKS OR INTER-TITE STANDARD LENGTH BARREL LOCK IN CONJUNCTION WITH BROOKS LOCK GUARDS #865 OR #86505, WITH PERMANENTLY WELDED BRACKET
- 5) MIDWEST LABEL ATTACHED TO THE END OF CARTON.
- 6) MIDWEST LOGO STAMPED ON LOWER LEFT-HAND CORNER OF FRONT.
- 7) TEMPORARY CARDBOARD METER COVER PROVIDED.

Bottom View



METER SKT-(1) 320A 600V 1P3W ALUM N3R 4-TERMINAL LARGE HUB OPN LEVER BYP AEP BARREL LK TRIPLEX GRD TOP/BOT FED

CAT NO	DWG DATE	REV #
UAFTH4330TSHMEP	04/25/2016	02