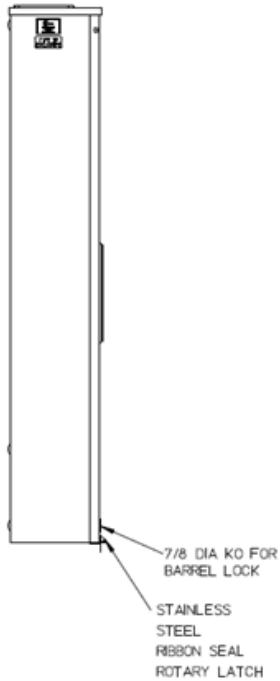
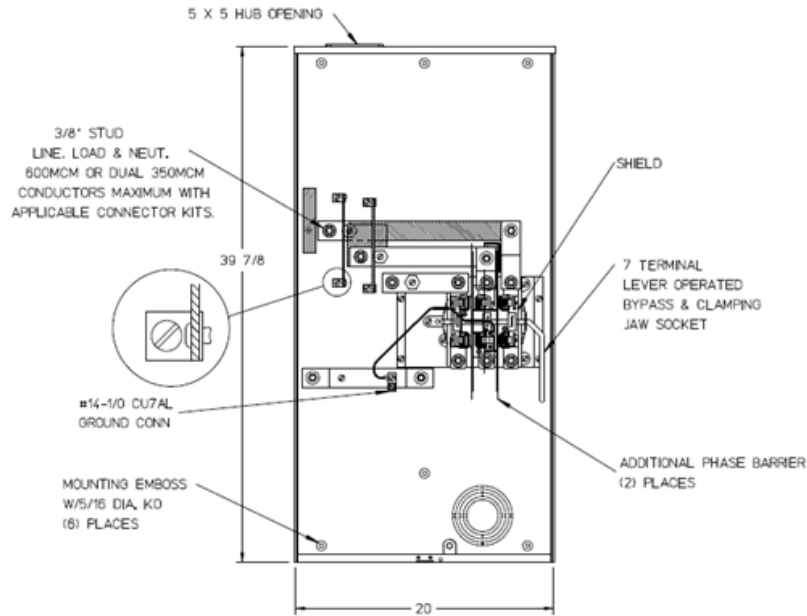


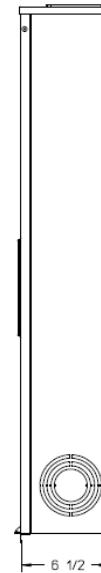
### Left Side View



### Front View Interior



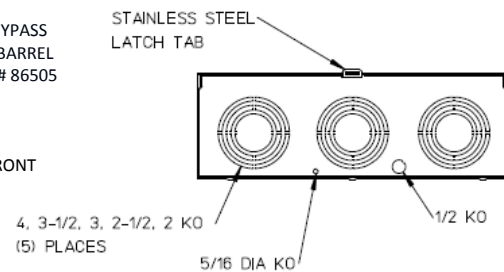
### Right Side View



### Notes

- 1) FINISH: NATURAL
- 2) CABINET: .080 ALUMINUM
- 3) 320 AMP CONTINUOUS, 600 VAC, 3 PHASE, 4 WIRE, 320 AMP BYPASS FOR AN EXPOSED INNER-TITE OR BROOKS STANDARD LENGTH BARREL LOCK IN CONJUNCTION WITH BROOKS LOCK GUARD # 865 OR # 86505 WITH A PERMANENTLY WELDED BRACKET
- 5) GE LABEL ATTACHED TO THE END OF THE CARTON
- 6) TEMPORARY CARDBOARD METER OPENING COVER PROVIDED
- 7) GE LOGO STAMPED ON LOWER LEFT HAND CORNER OF THE FRONT

### Bottom View



METER SKT-(1) 320A 600V 3P4W ALUM N3R 3PH 7-TERM LARGE HUB OPNG LEVER BYP AEP BARREL LK TPLX GRD TOP/BOT FED

**CAT NO**

**DWG DATE**

**REV #**

UAFTH7330TSHGE

04/25/2016

02