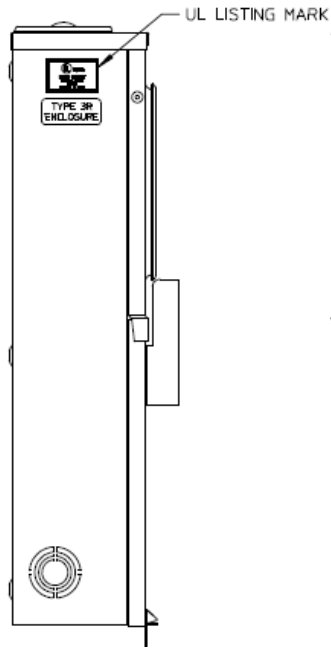
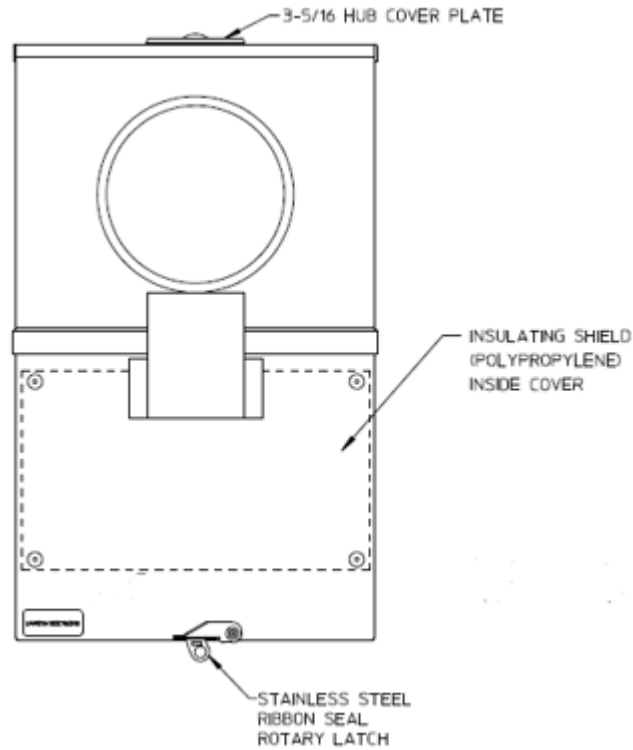


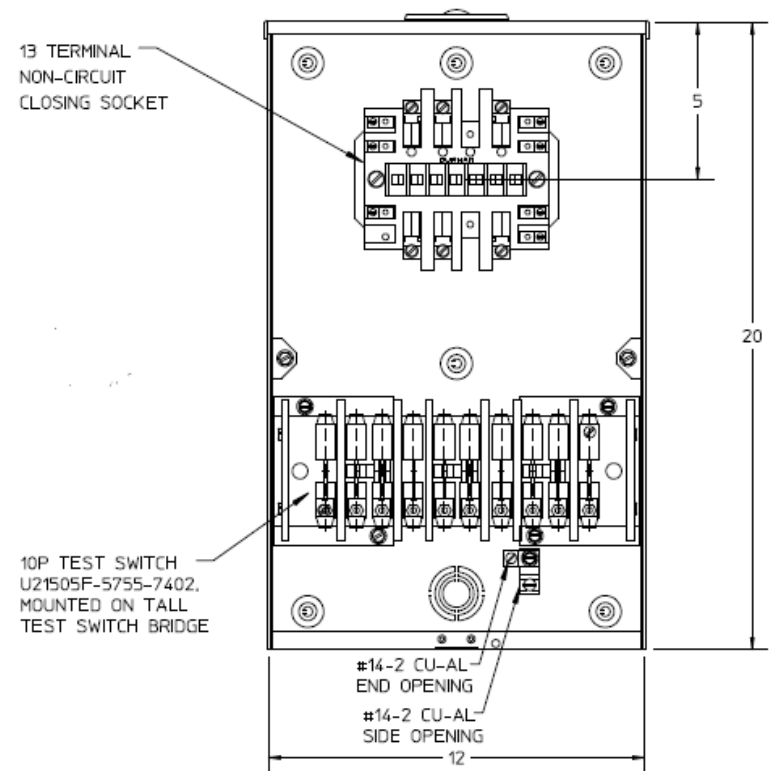
Left Side View



Front View Exterior



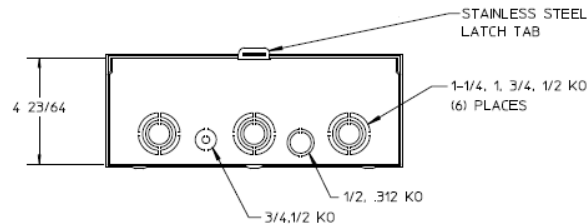
Front View Interior



Notes

- 1) UNIT RATING: 20 AMP CONTINUOUS, 600 VAC 3PH 4 WIRE
- 2) FINISH: NATURAL
- 3) CABINET CONSTRUCTED FROM 5052-H32 ALUMINUM ALLOY
- 4) UNIT IS PREWIRED FORM 8S/9S PER CUSTOMER SPECS
- 5) UNIT IS SUPPLIED WITH TEMPORARY CARDBOARD METER OPENING COVER
- 6) GE LABEL ATTACHED TO END OF THE CARTON
- 7) GE LOGO STAMPED ON LOWER LEFT HAND CORNER OF FRONT
- 8) SAFETY LABEL IS LOCATED ON THE LOWER RIGHT-HAND CORNER OF THE FRONT
- 9) FOR TECO USE ONLY
- 10) STAINLESS STEEL SCREW TYPE SEALING RING MOUNTED ON TOP FRONT

Bottom View



GE is a registered trademark used under license from General Electric company.



TRANSFORMER RATED MTR - 20A 13T 3P4W N3R ALUM
SMALL HUB CVR PLT TOP/BOT FEED TECO APPROVED

CAT NO	DWG DATE	REV #
UARSTH132C762GE	02/09/2017	01