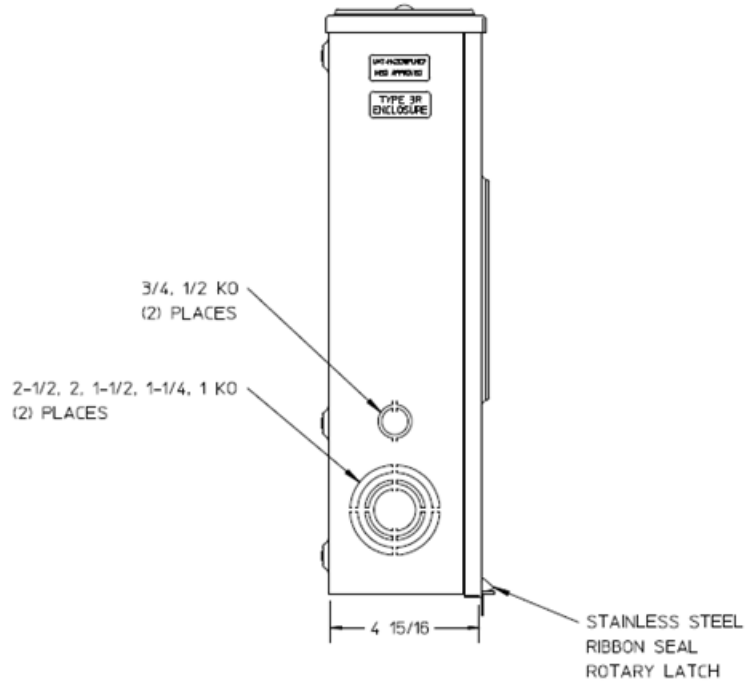
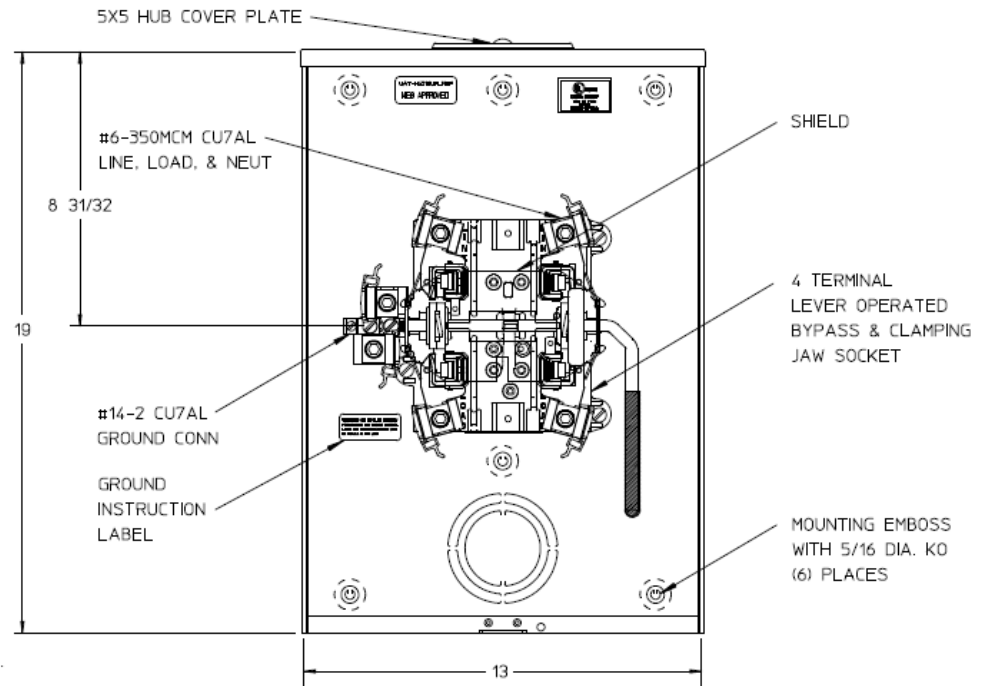


Left Side View



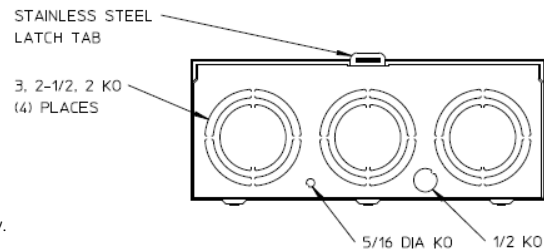
Front View Interior




Notes

- 1) FINISH: NATURAL
- 2) CABINET: .080 ALUMINUM
- 3) 200 AMP CONTINUOUS, 600 VAC, 1 PHASE, 3 WIRE, 200 AMP BYPASS
- 4) GE LABEL ATTACHED TO THE END OF THE CARTON
- 5) TEMPORARY CARDBOARD METER OPENING COVER PROVIDED
- 6) GE LOGO STAMPED ON LOWER LEFT HAND CORNER OF THE FRONT

Bottom View



		
METER SKT-(1) 200A 600V 1P3W ALUM N3R 4-TERM LARGE HUB CVR PLT TOP/BOT FEED LEVER BYP TPLX GRD MEG APPROVED		
CAT NO	DWG DATE	REV #
UATH4213UFLGE	06/13/2016	01