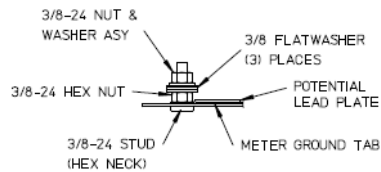


Left Side View



Neutral Stud Detail

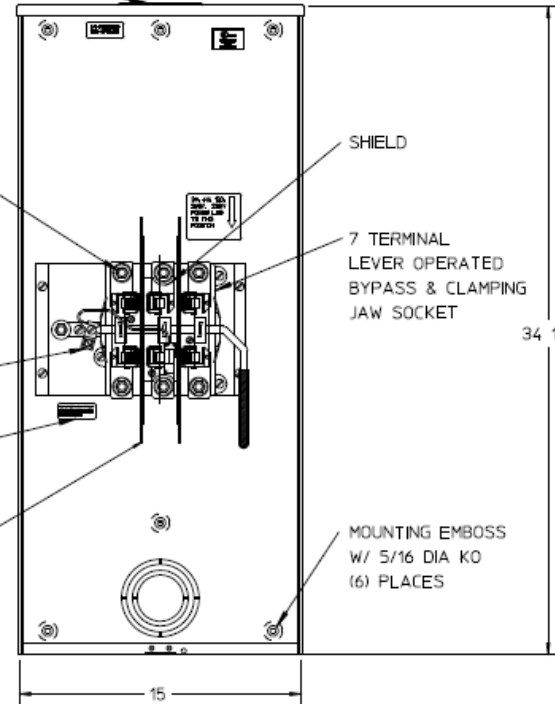


3-1/2, 3, 2-1/2, 2 KO
(6) PLACES

5 11/16

STAINLESS STEEL RIBBON SEAL ROTARY LATCH

Front View Interior



5 X 5 HUB OPENING

3/8" STUD LINE, LOAD & NEUT. 600MCM OR DUAL 350MCM CONDUCTORS MAXIMUM WITH APPLICABLE CONNECTOR KITS.

SHIELD

7 TERMINAL LEVER OPERATED BYPASS & CLAMPING JAW SOCKET

34 1/2

#14-1/0 CU7AL GROUND CONN GROUND INSTRUCTION LABEL

ADDITIONAL PHASE BARRIER (2) PLACES

MOUNTING EMBOSS W/ 5/16 DIA KO (6) PLACES

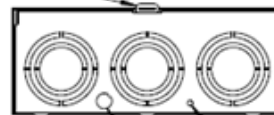
15

Notes

- 1) FINISH: NATURAL
- 2) CABINET: .080 ALUMINUM
- 3) 320 AMP CONTINUOUS 600 VAC, 3 PHASE, 4 WIRE 320 AMP BYPASS
- 4) TEMPORARY CARDBOARD METER OPENING COVER PROVIDED.
- 5) MIDWEST LABEL ATTACHED TO THE END OF THE CARTON.
- 6) MIDWEST LOGO STAMPED ON LOWER LEFT HAND CORNER OF FRONT.

Bottom View

STAINLESS STEEL LATCH TAB



1/2 KO 5/16 DIA KO



METER SKT-(1) 320A 600V 3P4W ALUM N3R 7-TERM LARGE HUB OPENING TOP/BOT FEED LEVER BY TPLX GRD MEG APPROVED

CAT NO

DWG DATE

REV #

UATH7300TFLMEP

06/13/2016

01