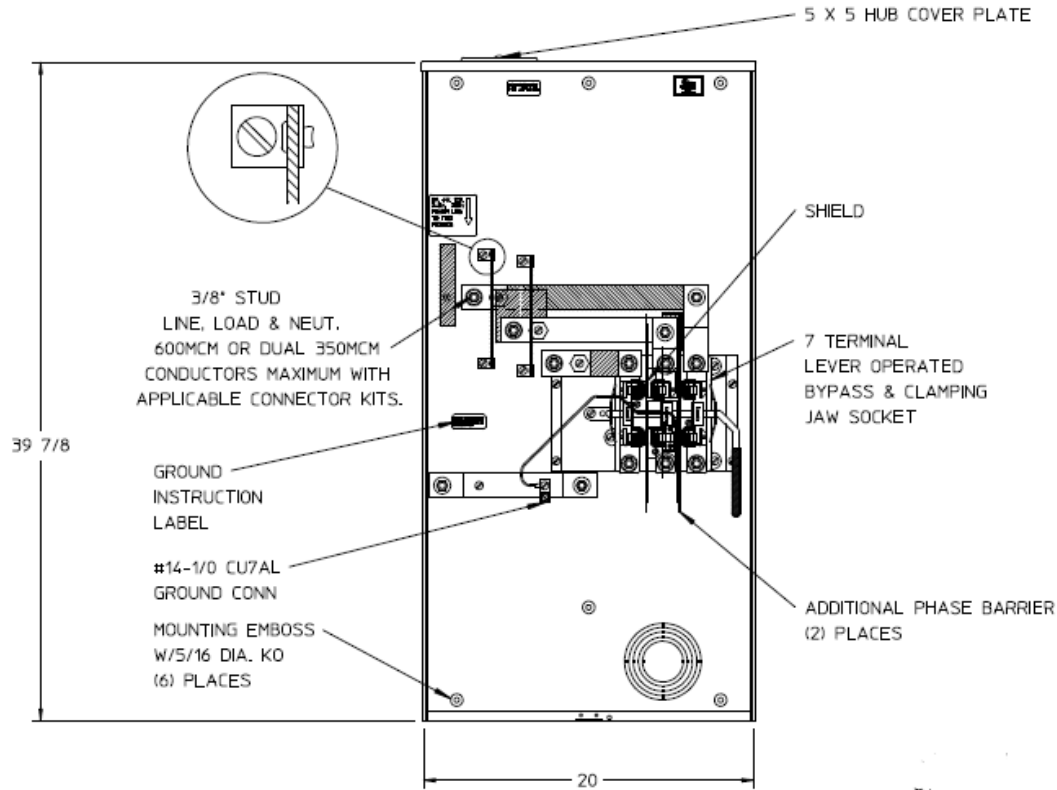


Left Side View



Front View Interior



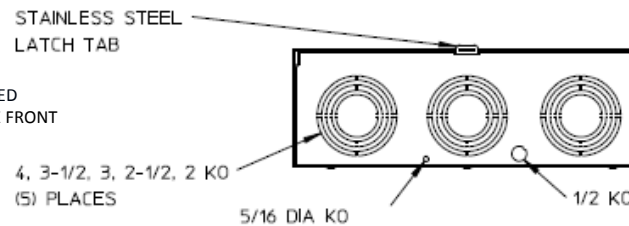
Right Side View



Notes

- 1) FINISH: NATURAL
- 2) CABINET: .080 ALUMINUM
- 3) 320 AMP CONTINUOUS, 600 VAC, 3 PHASE 4 WIRE, 320A BYPASS
- 4) GE LABEL ATTACHED TO THE END OF THE CARTON
- 5) TEMPORARY CARDBOARD METER OPENING COVER PROVIDED
- 6) GE LOGO STAMPED ON LOWER LEFT HAND CORNER OF THE FRONT

Bottom View



METER SKT-(1) 320A 600V 3P4W ALUM N3R 7-TERM LARGE HUB COVER PLT TOP/BOT FEED LEVER BYP TPLX GRD MEG APPROVED

| CAT NO | DWG DATE | REV # |
|---------------|------------|-------|
| UATH7300UFLGE | 06/13/2016 | 01 |