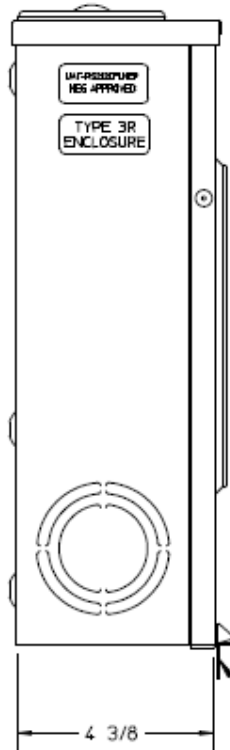
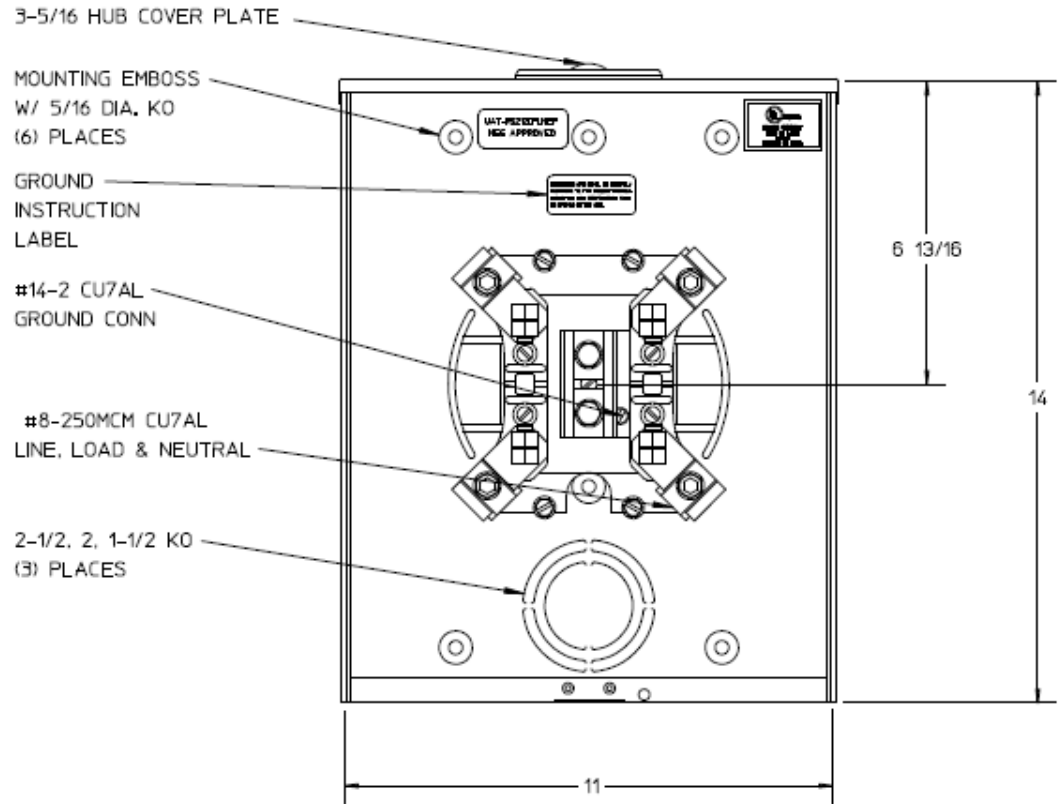


Left Side View



STAINLESS STEEL RIBBON SEAL ROTARY LATCH

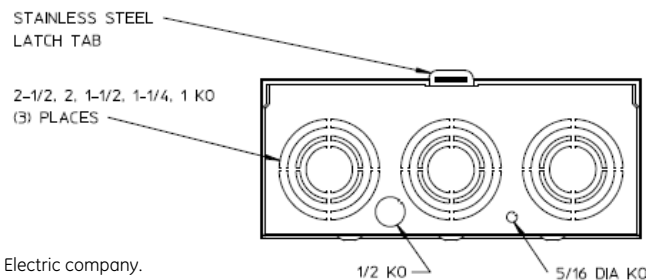
Front View Interior




Notes

- 1) FINISH: NATURAL
- 2) CABINET: .063 ALUMINUM
- 3) 200 AMP CONTINUOUS, 600 VAC, 1 PHASE 3 WIRE,
- 4) GE LABEL ATTACHED TO THE END OF THE CARTON
- 5) TEMPORARY CARDBOARD METER OPENING COVER PROVIDED
- 6) GE LOGO STAMPED ON LOWER LEFT HAND CORNER OF THE FRONT

Bottom View



GE is a registered trademark used under license from General Electric company.

		
METER SKT-(1) 200A 600V 1P3W ALUM N3R 4-TERM SMALL HUB COVER PLT TOP/BOT FEED TPLX GRD MEG APPROVED		
CAT NO	DWG DATE	REV #
UATRS212CFLGE	06/13/2016	01