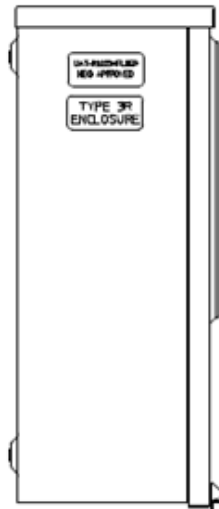
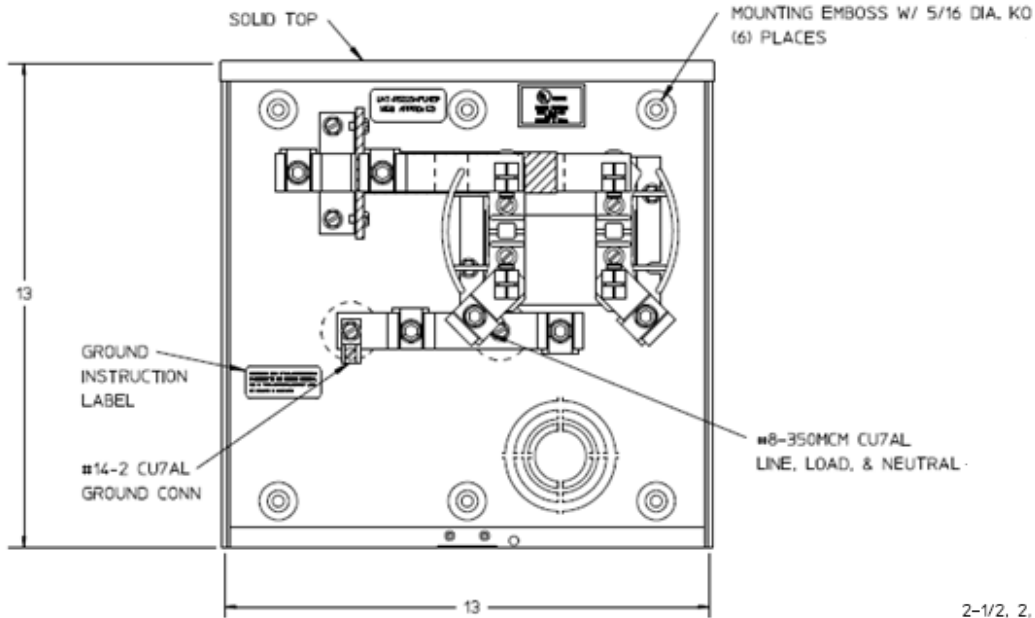


### Left Side View

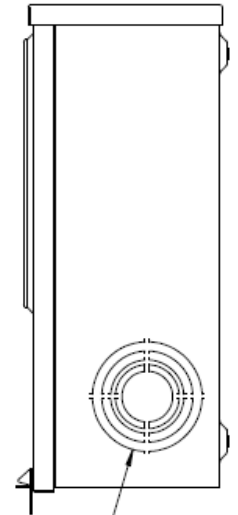


STAINLESS  
STEEL  
RIBBON SEAL  
ROTARY LATCH

### Front View Interior



### Right Side View

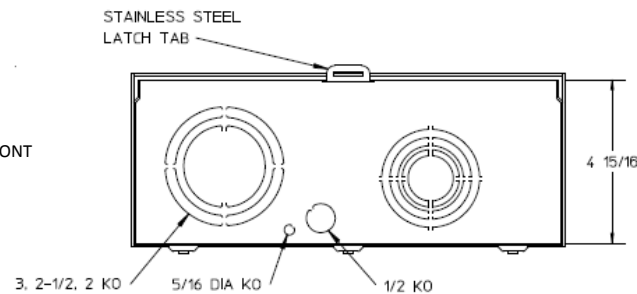


2-1/2, 2, 1-1/2, 1-1/4, 1 KO (3) PLACES

### Notes

- 1) FINISH: NATURAL
- 2) CABINET: .063 ALUMINUM
- 3) 200 AMP CONTINUOUS, 600 VAC, 1 PHASE 3 WIRE,
- 4) GE LABEL ATTACHED TO THE END OF THE CARTON
- 5) TEMPORARY CARDBOARD METER OPENING COVER PROVIDED
- 6) GE LOGO STAMPED ON LOWER LEFT HAND CORNER OF THE FRONT

### Bottom View



METER SOCKET-(1) 200A 600V 1P3W ALUM N3R 4-TERMINAL  
SOLID TOP TPLX GRD BOTTOM FEED MEG APPROVED

CAT NO	DWG DATE	REV #
UATRS223AFLGE	06/13/2016	01