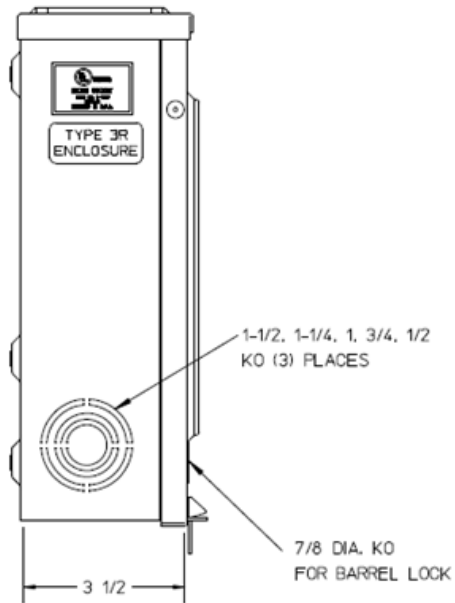
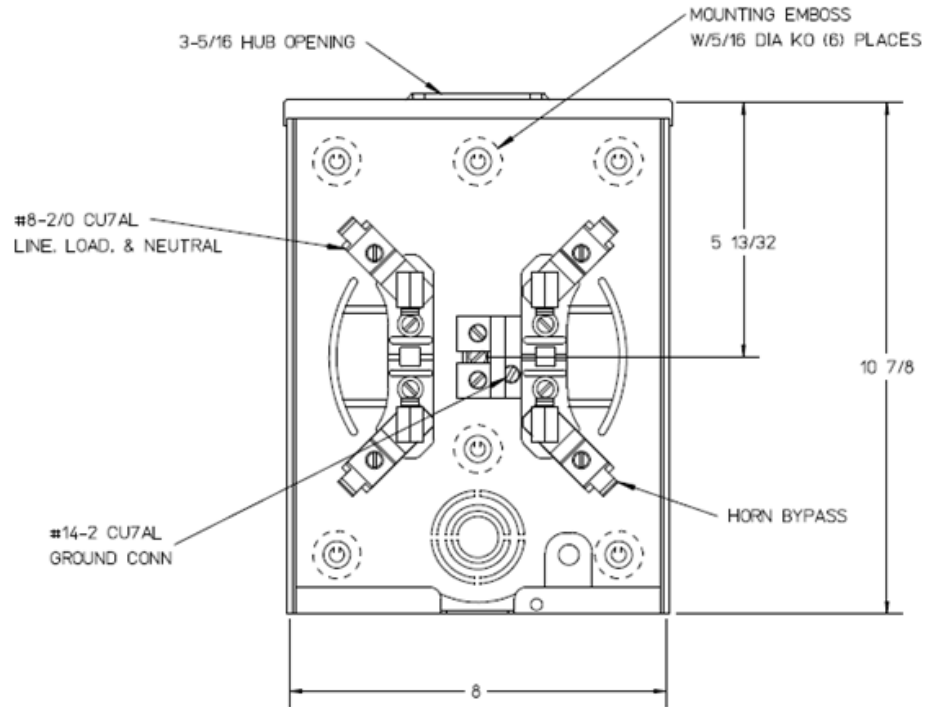


Left Side View



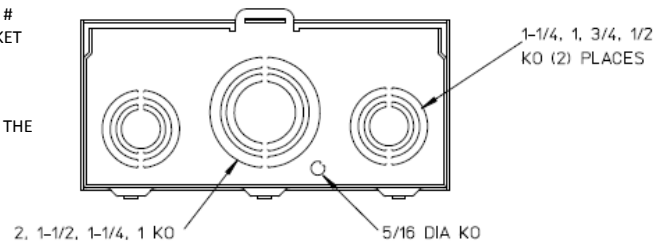
Front View Interior



Notes

- 1) FINISH: GRAY
- 2) CABINET: 16GA GALV STEEL
- 3) 125 AMP CONTINUOUS, 600 VAC, 1 PHASE, 3 WIRE
- 4) FOR BROOKS OR INNER-TITE STANDARD LENGTH BARREL LOCK IN CONJUNCTION WITH A BROOKS LOCK GUARDS # 865 OR # 86505 WITH A PERMANENTLY WELDED BRACKET
- 5) GE LABEL ATTACHED TO THE END OF THE CARTON
- 6) TEMPORARY CARDBOARD METER OPENING COVER PROVIDED
- 7) GE LOGO STAMPED ON LOWER LEFT HAND CORNER OF THE FRONT

Bottom View



METER SKT-(1)125A 600V 1P3W G90 N3R 4-TERM SMALL HUB OPNG TPLX GRD HORN BYP AEP BARREL LK TOP/BOT FEED

CAT NO

DWG DATE

REV #

UFHTRS101BGE

05/24/2016

02