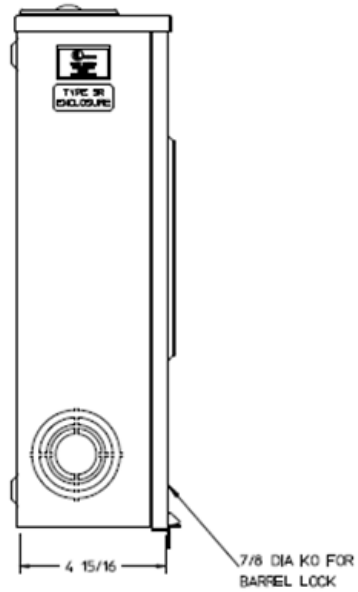
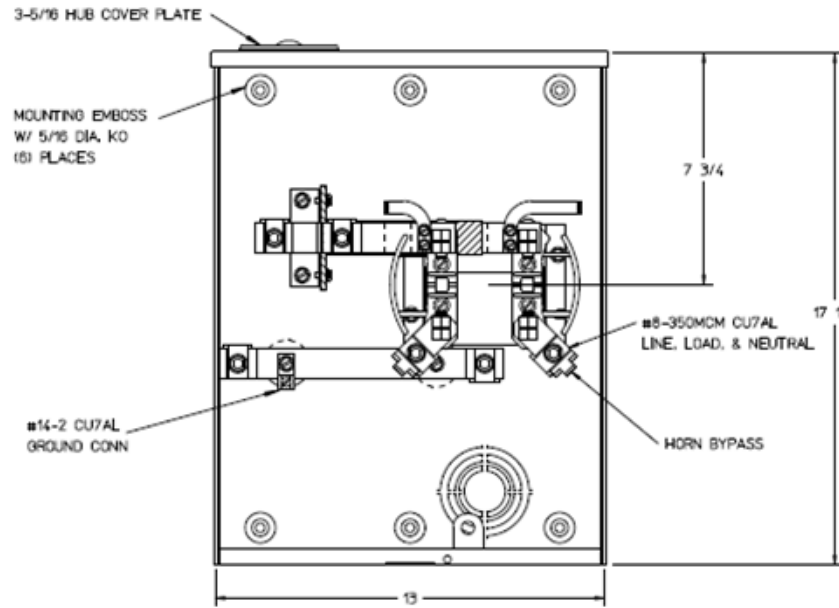


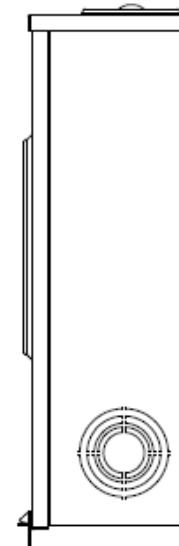
### Left Side View



### Front View Interior



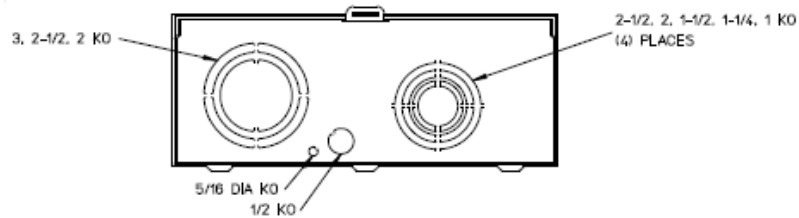
### Right Side View




### Notes

- 1) FINISH: GRAY
- 2) CABINET: 16GA GALV STEEL
- 3) 200 AMP CONTINUOUS, 600 VAC, 1 PHASE, 3 WIRE
- 4) FOR BROOKS OR INNER-TITE STANDARD LENGTH BARREL LOCK IN CONJUNCTION WITH A BROOKS LOCK GUARDS # 865 OR # 86505 WITH A PERMANENTLY WELDED BRACKET
- 5) GE LABEL ATTACHED TO THE END OF THE CARTON
- 6) TEMPORARY CARDBOARD METER OPENING COVER PROVIDED
- 7) GE LOGO STAMPED ON LOWER LEFT HAND CORNER OF THE FRONT

### Bottom View



		
METER SKT-(1) 200A 600V 1P3W G90 N3R 4-TERM SMALL HUB CVR PLT TOP/BOT FED HORNED BYP AEP BARREL LK TPLX GRD		
<b>CAT NO</b>	<b>DWG DATE</b>	<b>REV #</b>
UFHTRS233CGE	06/19/2016	01