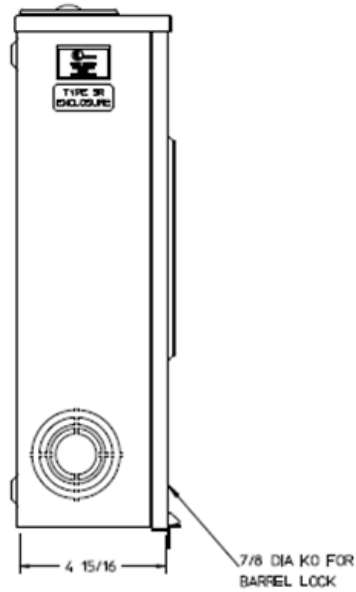
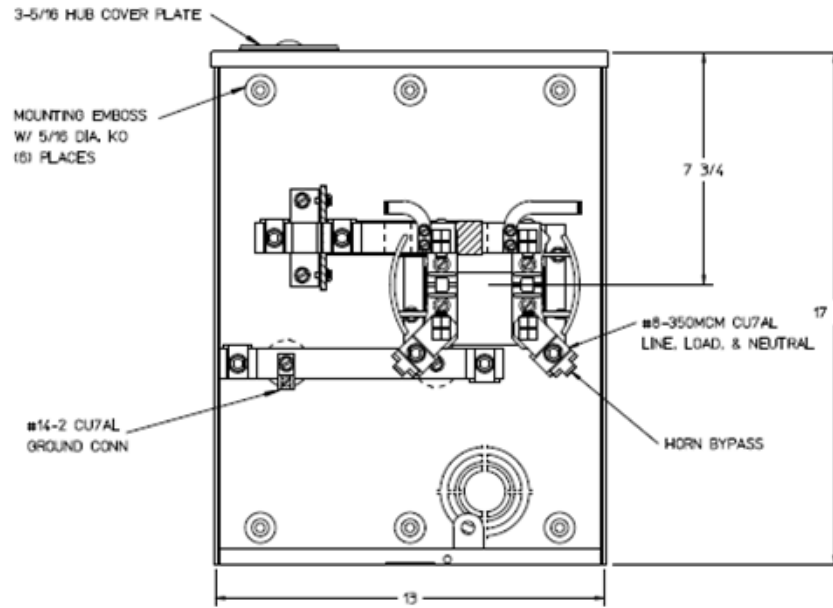


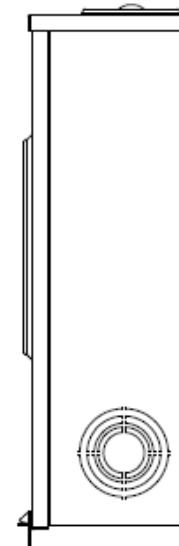
Left Side View



Front View Interior



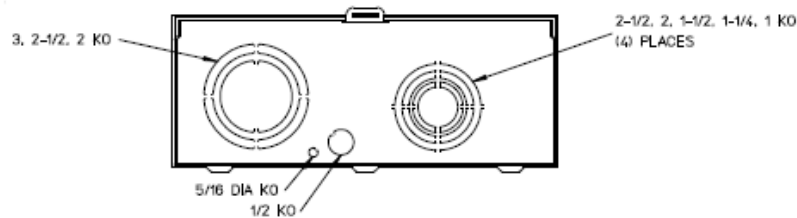
Right Side View



Notes

- 1) FINISH: GRAY
- 2) CABINET: 16 GA. GALV. STEEL
- 3) 200 AMP CONTINUOUS, 600 VAC, 1 PHASE, 3-WIRE
- 4) FOR BROOKS OR INNER-TITE STANDARD LENGTH BARREL LOCK IN CONJUNCTION WITH BROOKS LOCK GUARDS #865 OR #86505 WITH A PERMANENTLY WELDED BRACKET.
- 5) MIDWEST LABEL ATTACHED TO THE END OF CARTON.
- 6) MIDWEST LOGO STAMPED IN THE LOWER LEFT-HAND CORNER OF FRONT.
- 7) TEMPORARY CARDBOARD METER OPENING COVER PROVIDED.

Bottom View



METER SKT-(1) 200A 600V 1P3W G90 N3R 4-TERM SMALL HUB CVR PLT TOP/BOT FED HORNED BYP AEP BARREL LK TPLX GRD

CAT NO	DWG DATE	REV #
UFHTRS233CMEP	06/19/2016	01