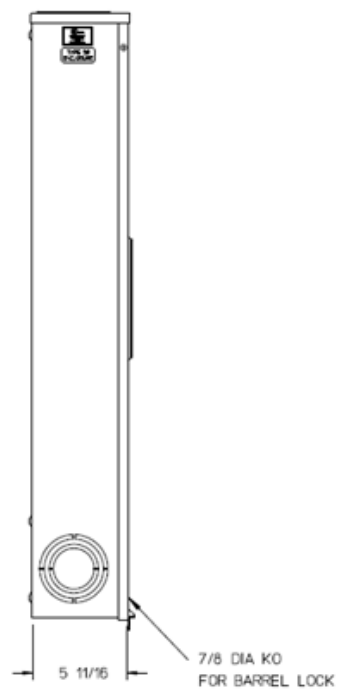
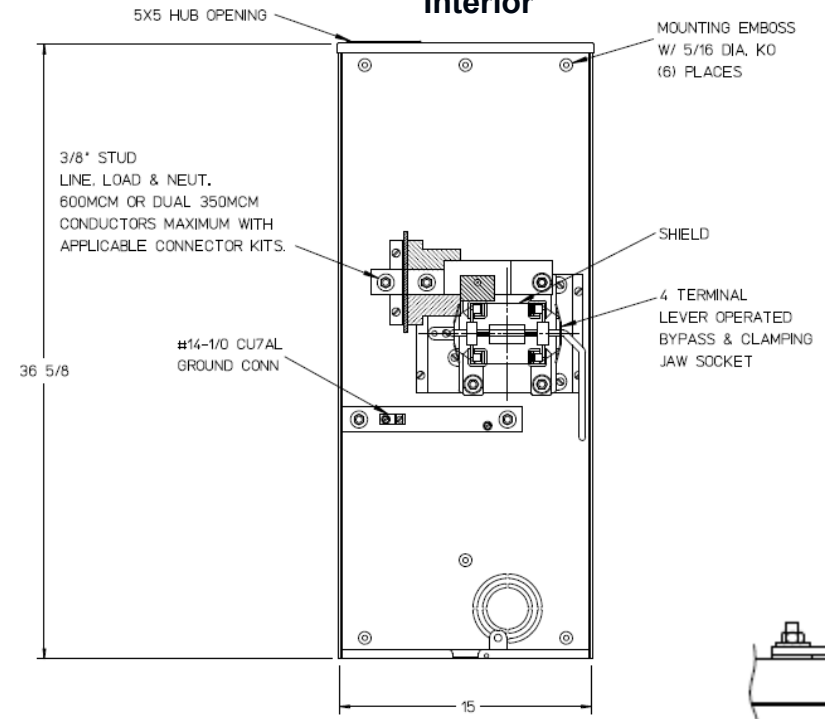


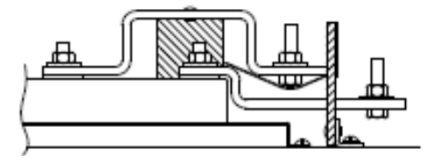
**Left Side View**



**Front View Interior**



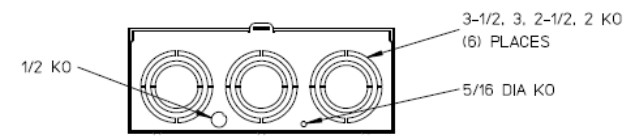
**Line Bus Detail**



**Notes**

- 1) FINISH: GRAY
- 2) CABINET: 16GA GALV. STEEL
- 3) 320AMP CONTINUOUS  
600 VAC, 1 PHASE, 3-WIRE  
320AMP BYPASS
- 4) FOR BROOKS OR INTER-TITE STANDARD LENGTH BARREL LOCK IN CONJUNCTION WITH BROOKS LOCK GUARDS #865 OR #86505, WITH PERMANENTLY WELDED BRACKET
- 5) MIDWEST LABEL ATTACHED TO THE END OF CARTON.
- 6) TEMPORARY CARDBOARD METER OPENING COVER PROVIDED.
- 7) MIDWEST LOGO STAMPED IN THE LOWER LEFT-HAND CORNER OF FRONT.

**Bottom View**



METER SKT-(1) 320A 600V 1P3W G90 N3R 4-TERM LARGE HUB OPENING TOP/BOT FED TPLX GRD AEP BARREL LK LEVER BYP

CAT NO	DWG DATE	REV #
UFTH4330TMEP	06/20/2016	01