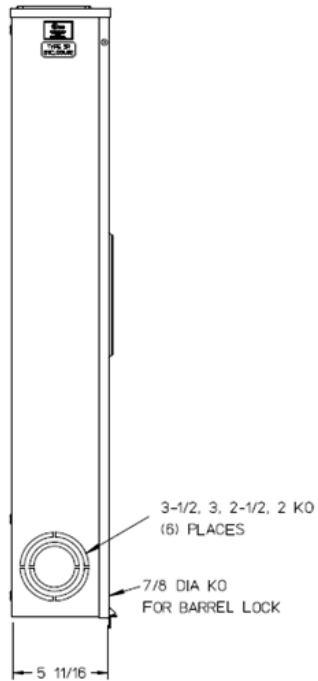
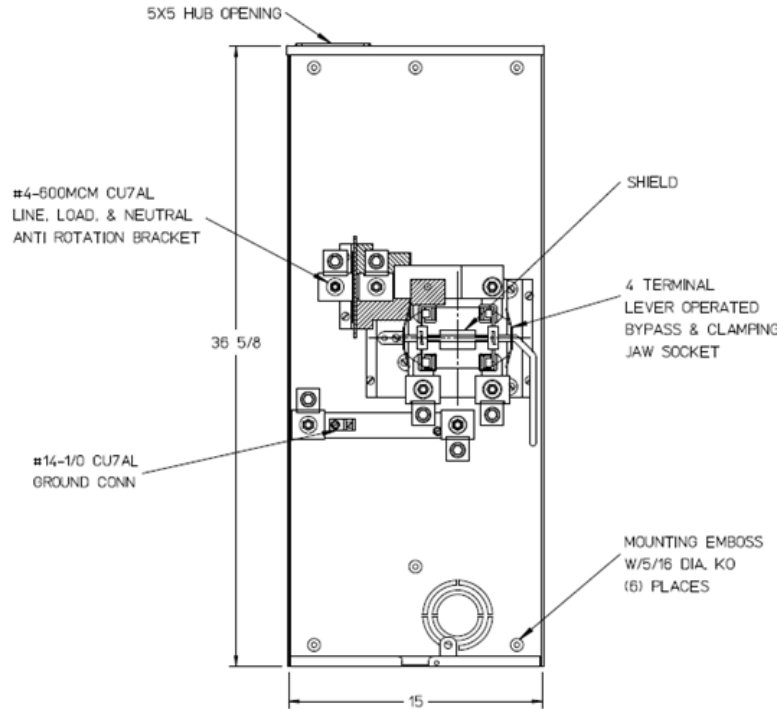


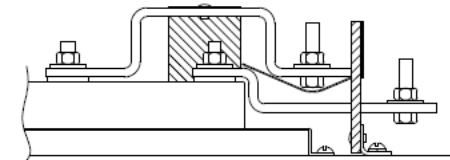
### Left Side View



### Front View Interior



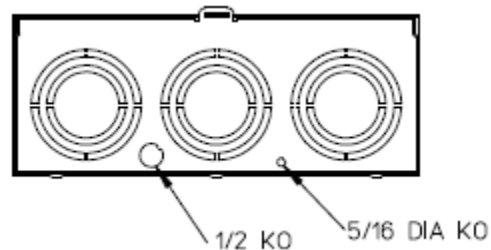
### Line Bus Detail



### Notes

- 1) FINISH: GRAY
- 2) CABINET: 16GA GALV STEEL
- 3) 320 AMP CONTINUOUS, 600 VAC, 1 PHASE, 3 WIRE, 320 AMP BYPASS FOR BROOKS OR INNER-TITE STANDARD LENGTH BARREL LOCK IN CONJUNCTION WITH A BROOKS LOCK GUARDS # 865 OR # 86505 WITH A PERMANENTLY WELDED BRACKET
- 5) GE LABEL ATTACHED TO THE END OF THE CARTON
- 6) TEMPORARY CARDBOARD METER OPENING COVER PROVIDED
- 7) GE LOGO STAMPED ON LOWER LEFT HAND CORNER OF THE FRONT

### Bottom View



METER SOCKET-(1) 320A 600V 1P3W G90 N3R 4-TERMINAL LARGE HUB OPNG LEVER BYP AEP BARREL LK TOP/BOT FEED

**CAT NO**  
UFTH4336TGE

**DWG DATE**  
04/25/2016

**REV #**  
02