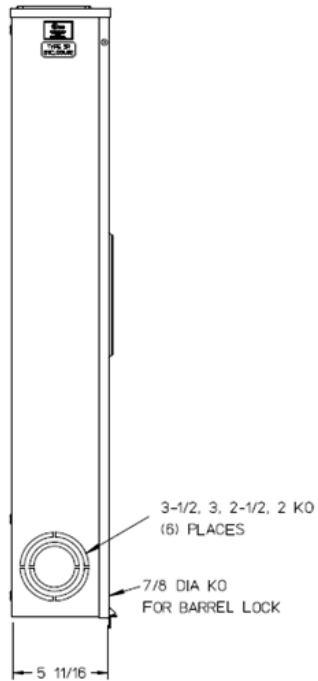
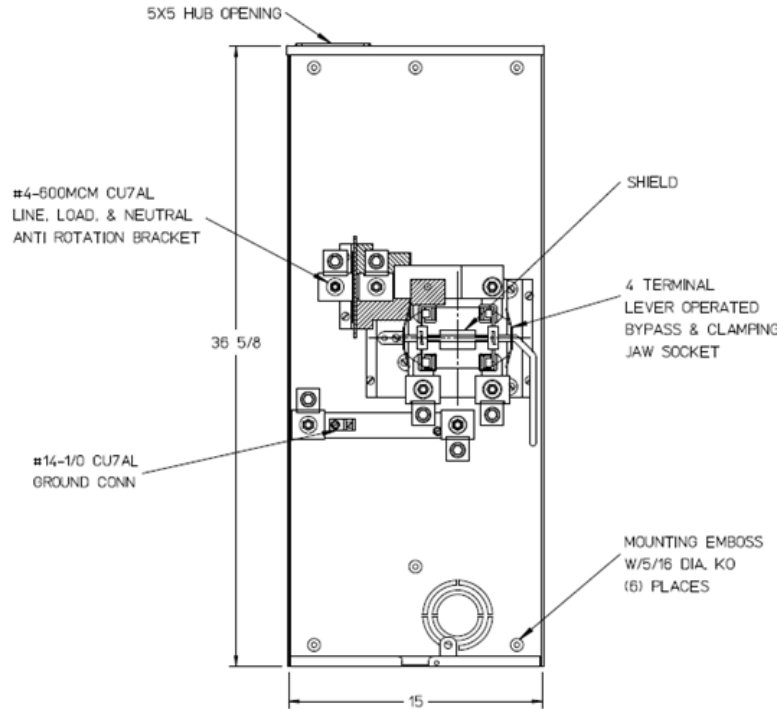


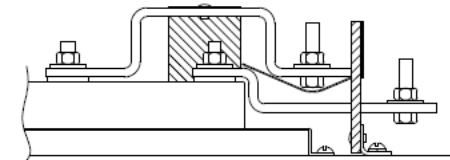
Left Side View



Front View Interior



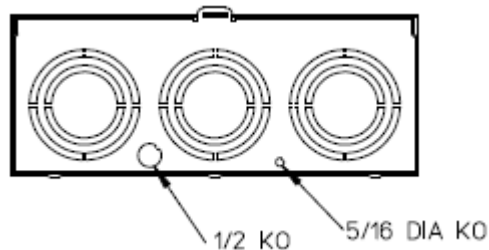
Line Bus Detail



Notes

- 1) FINISH: GRAY
- 2) CABINET: 16 GA GALV. STEEL
- 3) 320 AMP CONTINUOUS
600 VAC, 1 PHASE, 3-WIRE
320 AMP BYPASS
- 4) FOR BROOKS OR INTER-TITE STANDARD
LENGTH BARREL LOCK IN CONJUNCTION
WITH BROOKS LOCK GUARDS #865 OR
#86505, WITH PERMANENTLY WELDED
BRACKET
- 5) MIDWEST LABEL ATTACHED
TO THE END OF CARTON.
- 6) TEMPORARY CARDBOARD METER OPENING
COVER PROVIDED.
- 7) MIDWEST LOGO STAMPED IN THE
LOWER LEFT-HAND CORNER OF FRONT.

Bottom View



METER SOCKET-(1) 320A 600V 1P3W G90 N3R 4-TERMINAL
LARGE HUB OPNG LEVER BYP AEP BARREL LK TOP/BOT FEED

CAT NO	DWG DATE	REV #
UFTH4336TMEP	04/25/2016	02