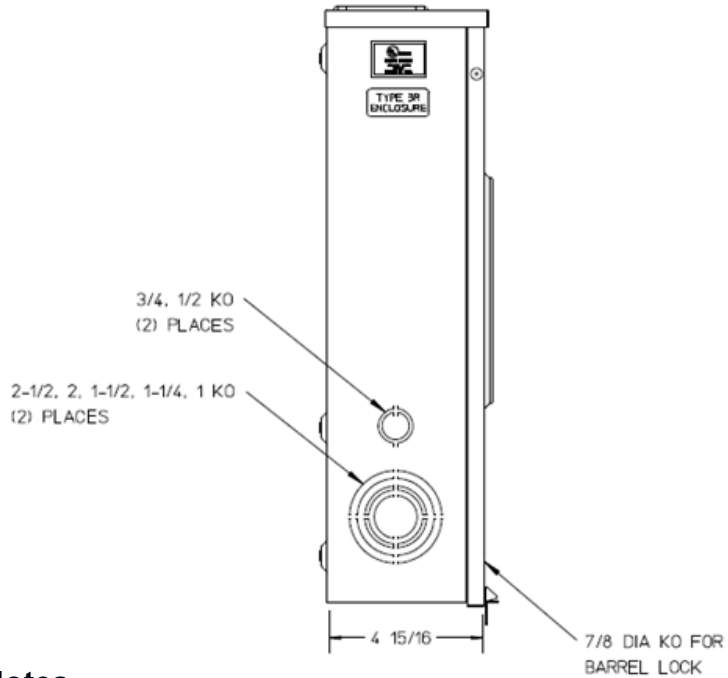
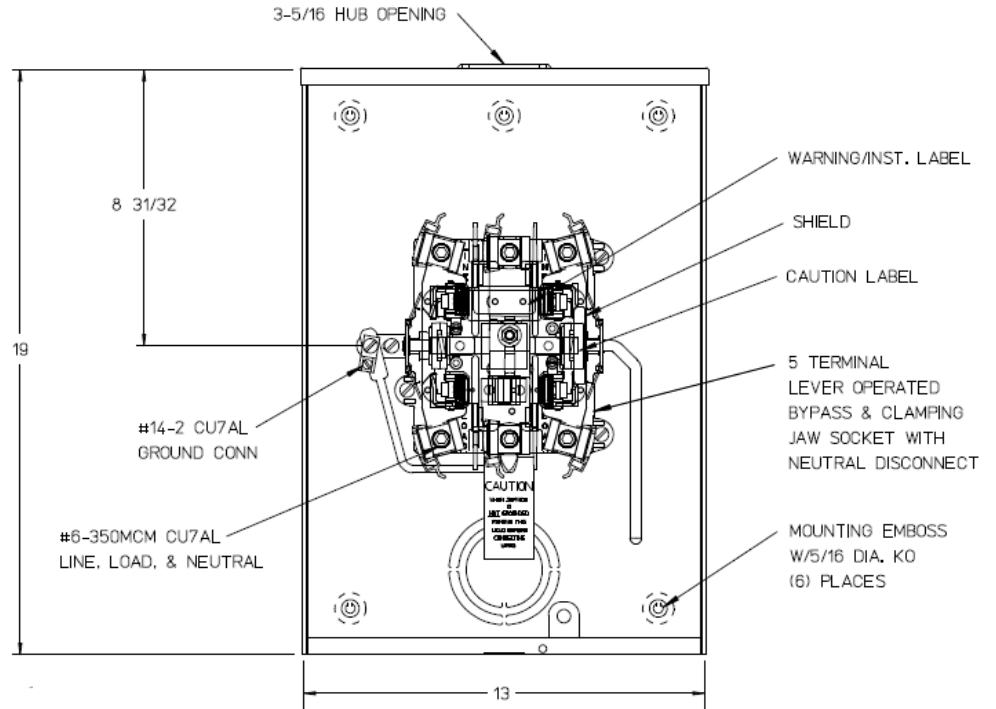


### Left Side View



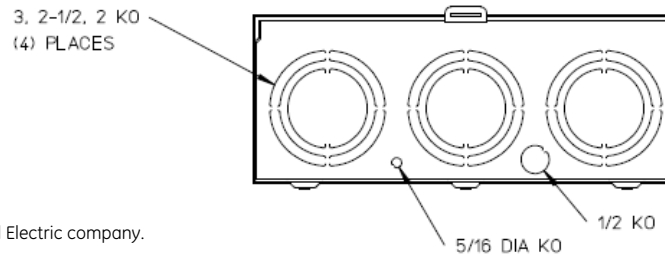
### Front View Interior



### Notes

- 1) FINISH: GRAY
- 2) CABINET: 16GA GALV STEEL
- 3) 200 AMP CONTINUOUS, 600 VAC, 3 PHASE, 3 WIRE  
1 PHASE, 3 WIRE, NETWORK, 3 WIRE, 200 AMP BYPASS
- 4) FOR BROOKS OR INNER-TITE STANDARD LENGTH BARREL LOCK IN  
CONJUNCTION WITH A BROOKS LOCK GUARDS # 865 OR # 86505 WITH  
A PERMANENTLY WELDED BRACKET
- 5) GE LABEL ATTACHED TO THE END OF THE CARTON
- 6) TEMPORARY CARDBOARD METER OPENING COVER PROVIDED
- 7) GE LOGO STAMPED ON LOWER LEFT HAND CORNER OF THE FRONT

### Bottom View



METER SKT-(1) 200A 600V 1P3W OR 3P3W G90 N3R 5-TRM TPLX  
GRD SMALL HUB OPN LEVER BYP AEP BARREL LK TOP/BOT FED

CAT NO	DWG DATE	REV #
UFTH5213BNDGE	04/25/2016	02