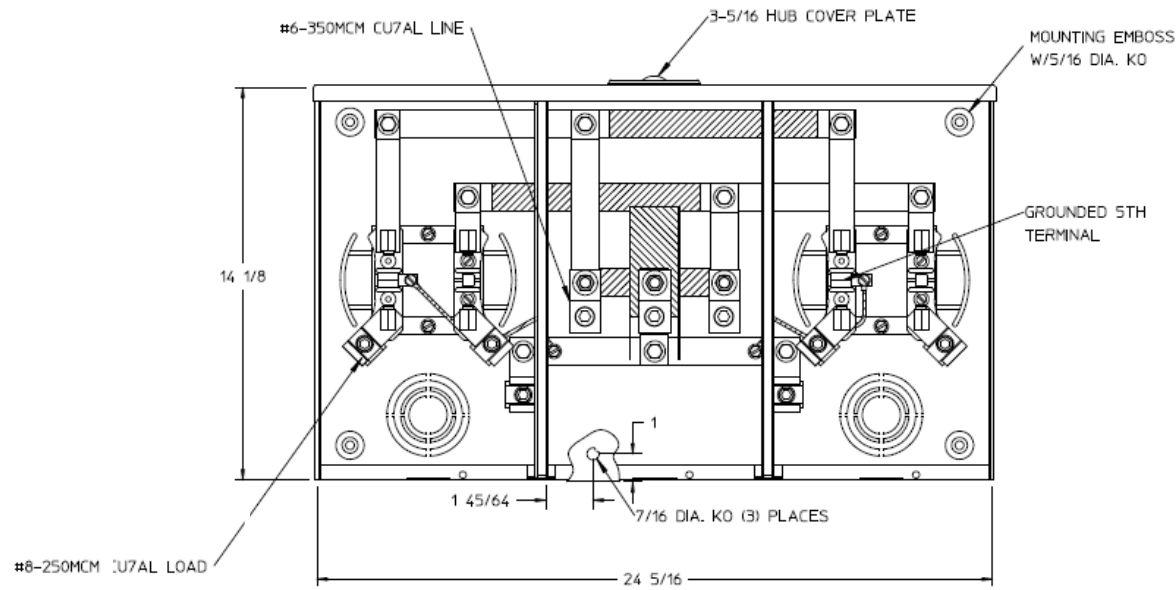
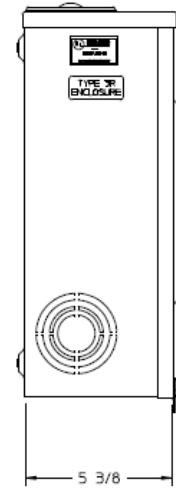


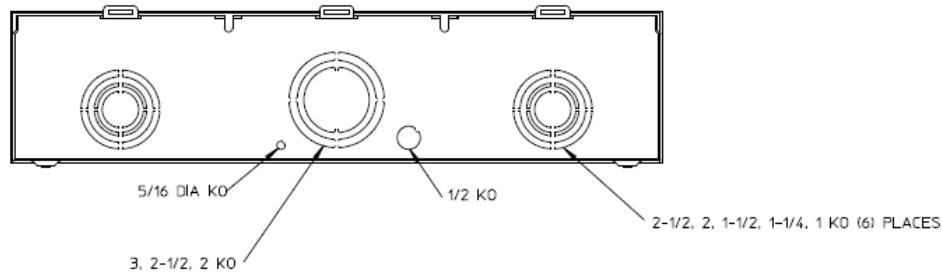
### Front View



### Side View



### Bottom View



### Notes

- 1) FINISH: GRAY
- 2) CABINET: 16 GA GALV. STEEL
- 3) 150 AMP CONTINUOUS PER POSITION  
600 VAC, 1 PHASE, 3-WIRE  
205 AMP CONTINUOUS (TOTAL) UNIT RATING
- 4) GE LABEL ATTACHED TO THE END OF THE CARTON
- 5) TEMPORARY CARDBOARD METER OPENING COVER PROVIDED
- 6) GE LOGO LOCATED IN THE LOWER LEFT-HAND CORNER OF THE FRONT
- 7) LOCATION OF BARREL LOCK PROVISIONS PER KCP&L SPECIFICATIONS

GE is a registered trademark used under license from General Electric company.



HORIZ GANGED METER SOCKETS-(2) 150A 600V 1P3W N3R  
SMALL HUBCVRPL 5-TRM CTR FED KCPL BARREL LK G90

CAT NO	DWG DATE	REV #
UG2R5332CKCGE	02/09/2016	01