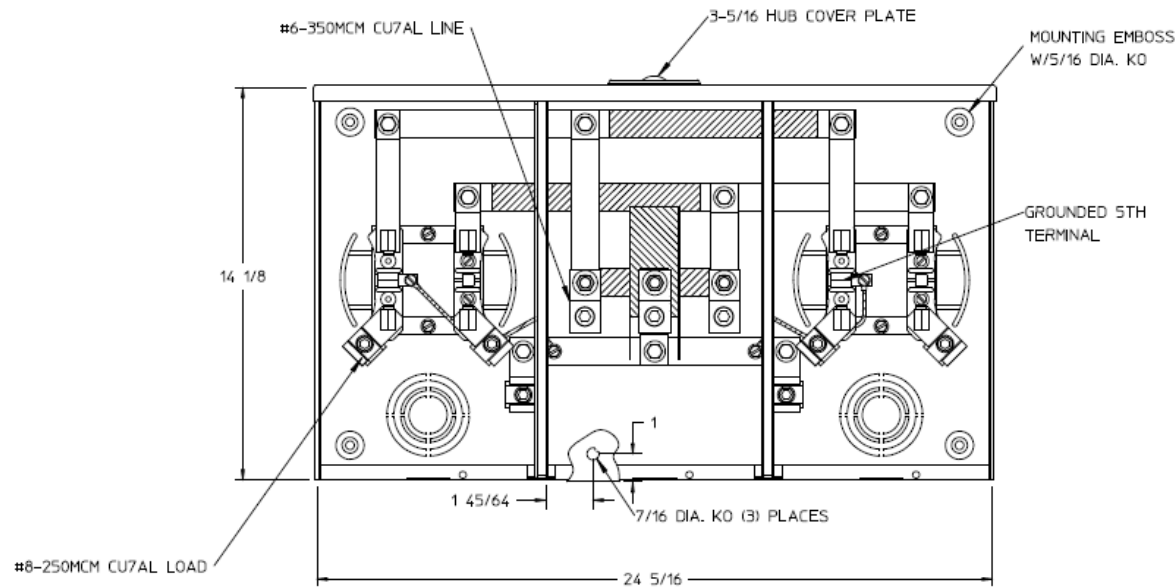
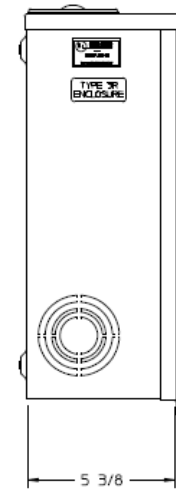


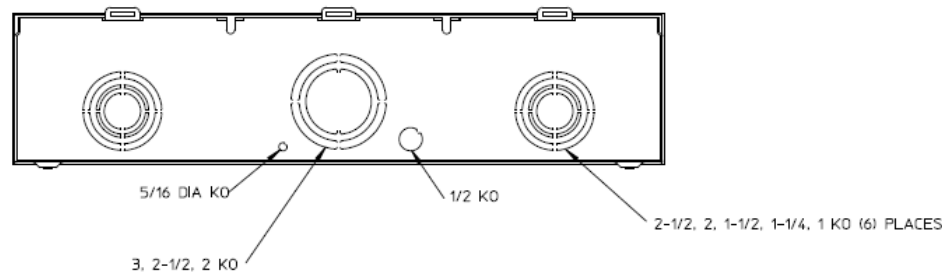
Front View



Side View



Bottom View



Notes

- 1) FINISH: GRAY
- 2) CABINET: 16 GA GALV STEEL
- 3) 150 AMP CONTINUOUS PER POSITION
600 VAC, 1 PHASE, 3-WIRE
205 AMP CONTINUOUS (TOTAL) UNIT RATING
- 4) TEMPORARY CARDBOARD METER OPENING COVER PROVIDED.
- 5) MIDWEST LABEL ATTACHED TO THE END OF THE CARTON.
- 6) MIDWEST LOGO LOCATED IN LOWER LEFT HAND CORNER OF THE FRONT.
- 7) LOCATION OF BARREL LOCK PROVISIONS PER KCP&L SPECIFICATIONS.



HORIZ GANGED METER SOCKETS-(2) 150A 600V 1P3W
N3R HUB CVR PL 5-TERM CTR FED KCPL BARREL LK G90

CAT NO	DWG DATE	REV #
UG2R5332CKCMEP	02/09/2016	01