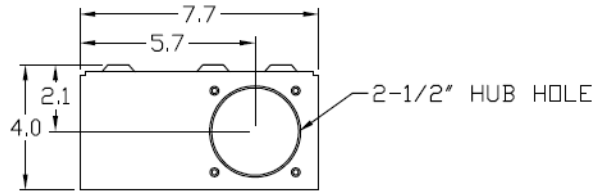


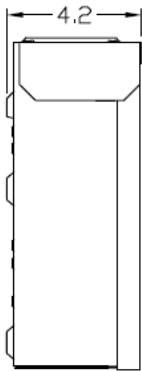
Top View



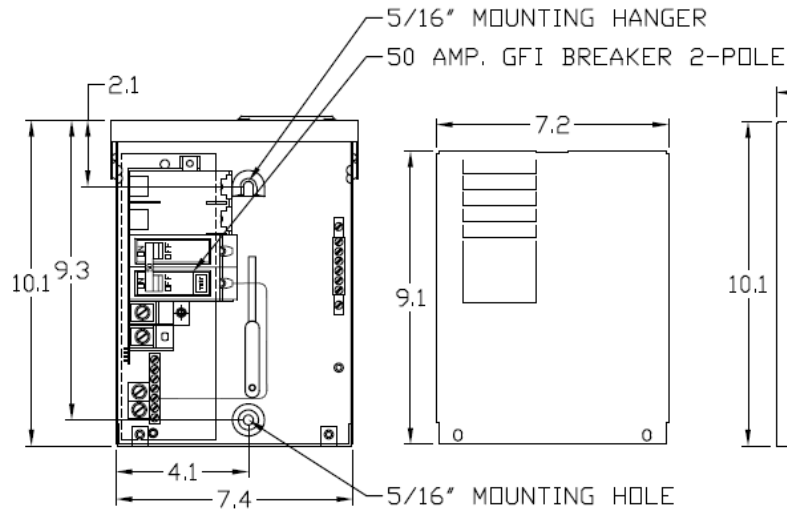
Knockouts

F= 1/2" KO
G= 1/2", 3/4", 1" KO
V= 3/4", 1", 1-1/4", 1-1/2" KO

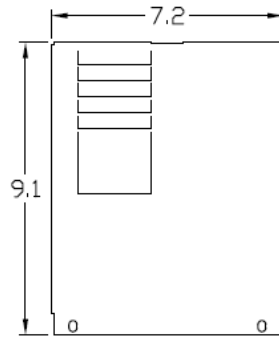
Left Side View



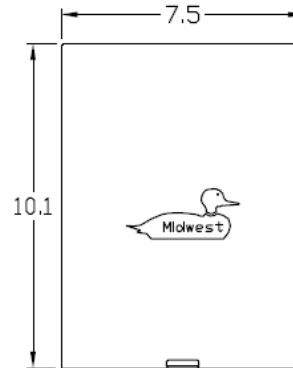
Front View Interior



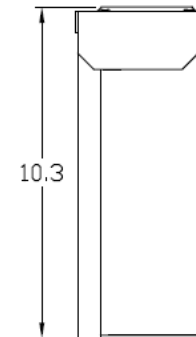
Front View Inside Cover



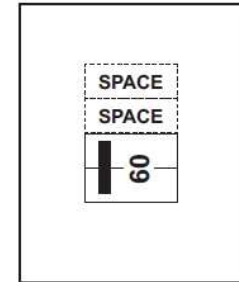
Front View External Covers



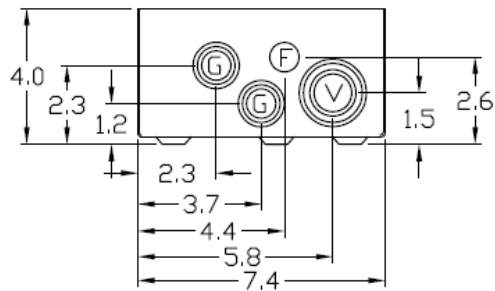
Right Side View



Configuration




Bottom View



Wire Range Size

#6-2/0 AWG CU-AL



MIDWEST SPA PANEL 125A W/ 60A GFCI DISC N3R 1PH3W
120/240V 2/4 CKT UL LISTED TOP/BOTTOM G90 STEEL RETAIL

CAT NO	DWG DATE	REV #
UG412RMW260P	03/22/2016	02