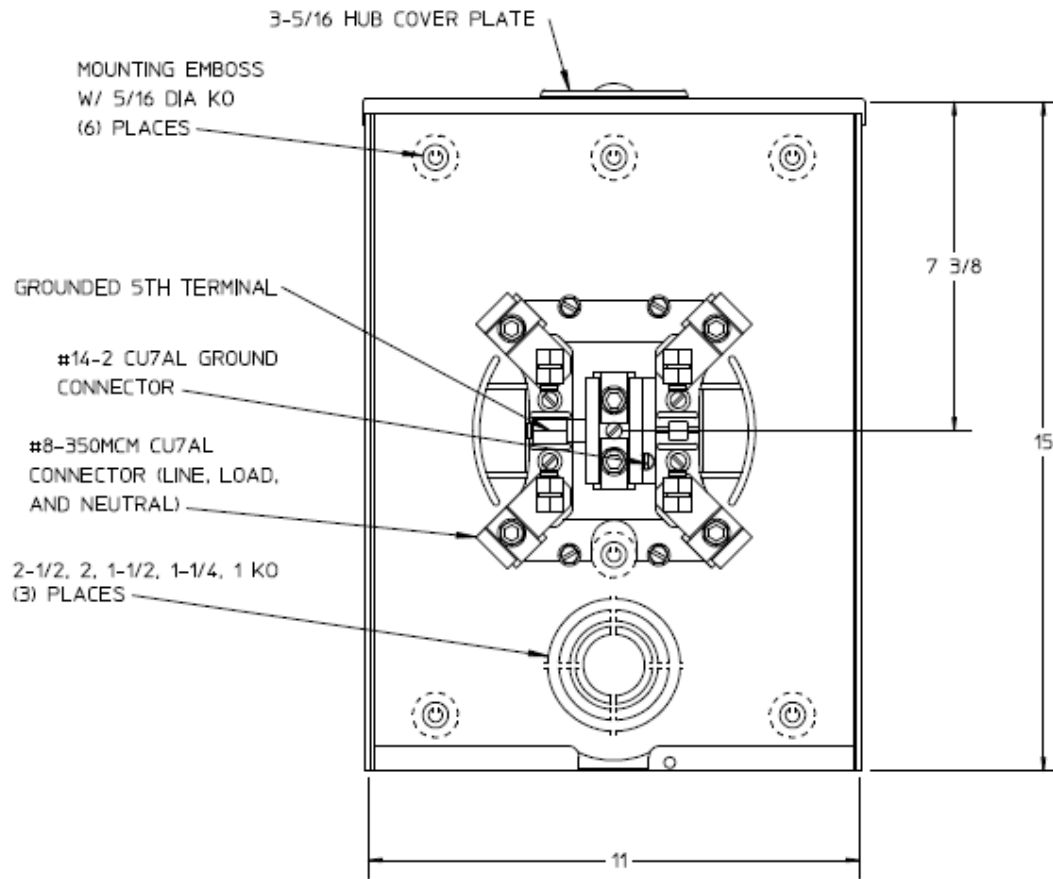
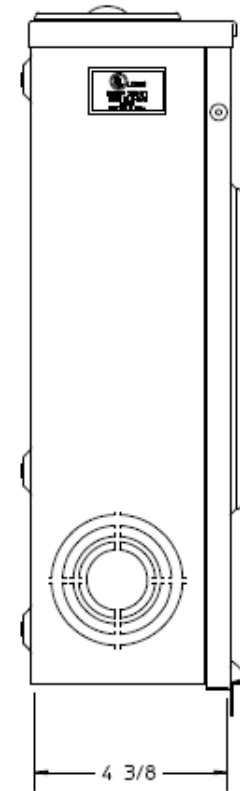


### Front View



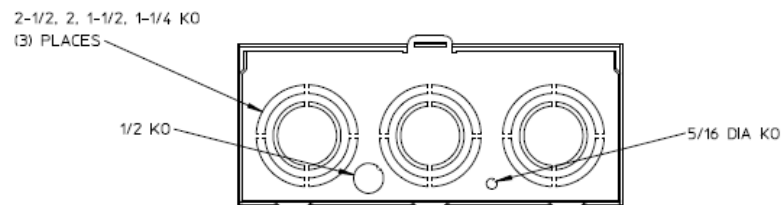
### Side View



### Notes

- 1) FINISH: GRAY
- 2) CABINET: 16GA GALV. STEEL
- 3) 200AMP CONTINUOUS, 600 VAC, 1 PHASE, 3-WIRE
- 4) MIDWEST LABEL ATTACHED TO THE END OF CARTON.
- 5) MIDWEST LOGO STAMPED IN THE LOWER LEFT-HAND CORNER OF FRONT.
- 6) TEMPORARY CARDBOARD METER OPENING COVER PROVIDED.

### Bottom View



METER SOCKET-(1) 200A 600V 1P3W G90 5-TERM N3R  
TRIPLEX GRD HUB COVER PLATE TOP/BOT FEED

CAT NO	DWG DATE	REV #
UGTRS213CMEP	02/10/2016	01