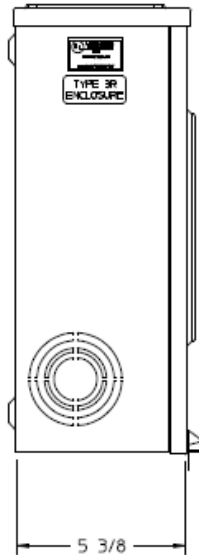
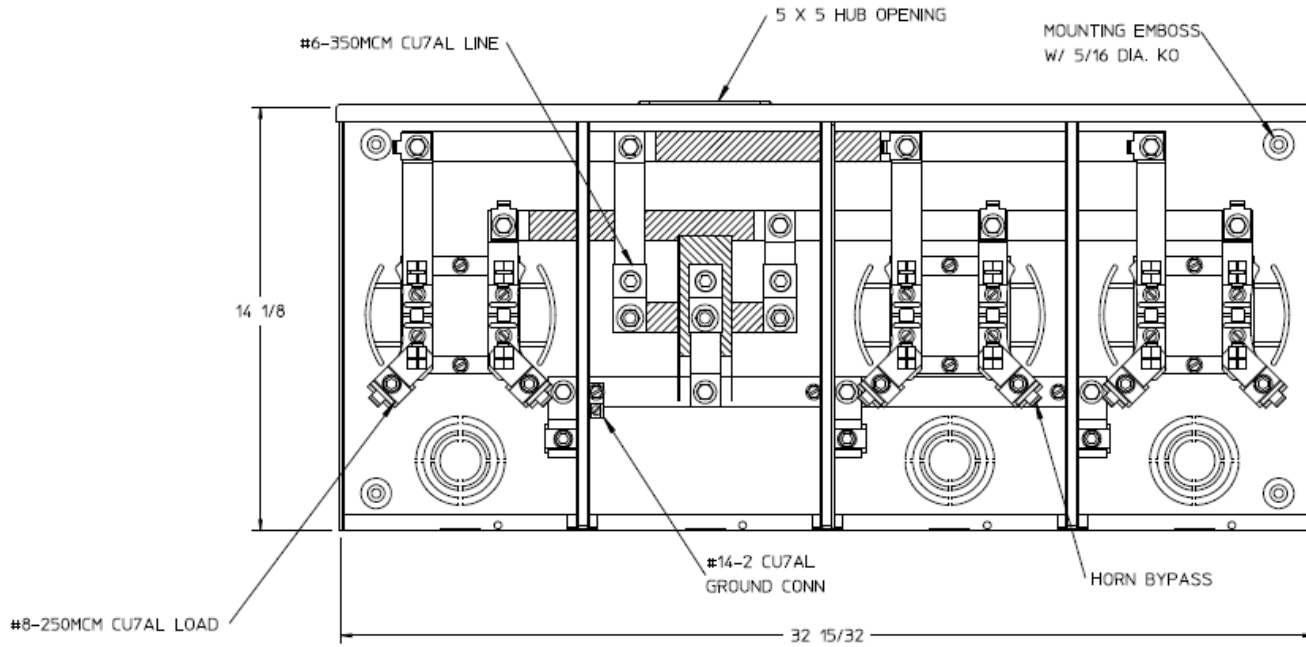


### Left Side View



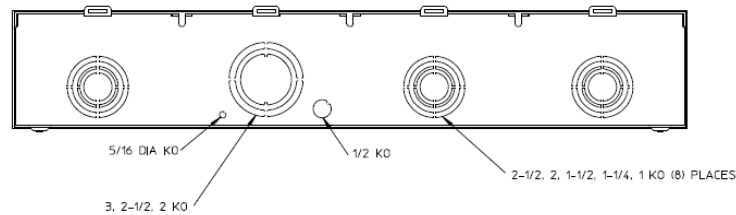
### Front View Interior



### Notes

- 1) FINISH: GRAY
- 2) CABINET: 16 GA GALV STEEL
- 3) 200 AMP CONTINUOUS PER POSITION  
600 VAC, 1 PHASE, 3-WIRE  
300 AMP CONTINUOUS (TOTAL) UNIT RATING WITH CU  
250 AMP CONTINUOUS (TOTAL) UNIT RATING WITH AL
- 4) TEMPORARY CARDBOARD METER OPENING COVER PROVIDED.
- 5) MIDWEST LABEL ATTACHED TO THE END OF THE CARTON.
- 6) MIDWEST LOGO LOCATED IN LOWER LEFT HAND CORNER OF THE FRONT.
- 7) CONNECTORS POSITIONED FOR OVERHEAD FEED.

### Bottom View



HORIZ GANGED METER SKT-(3) 200A 600V 1P3W G90 N3R 4-TERM  
LARGE HUB OPNG CENTER FEED HORN BYP TRIPLEX GRD

CAT NO	DWG DATE	REV #
UHT3R2332TMEP	04/15/2016	02