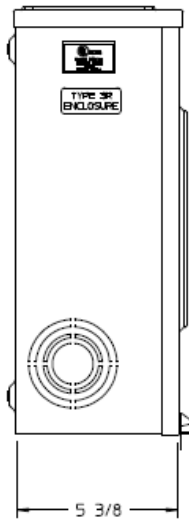
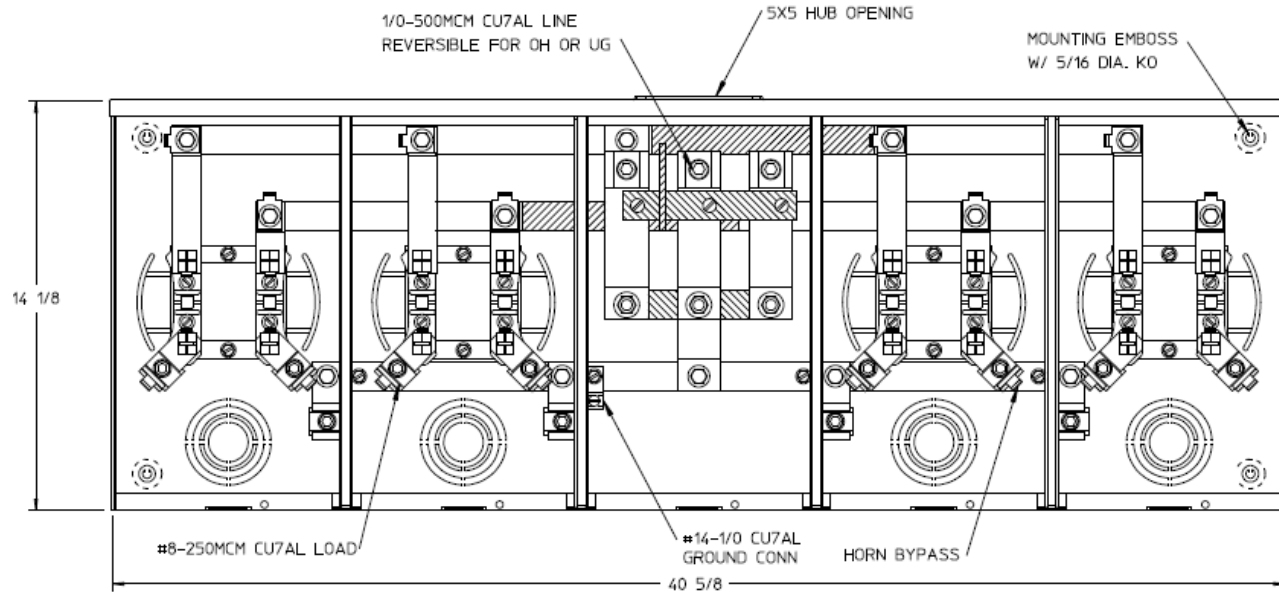


**Left Side View**



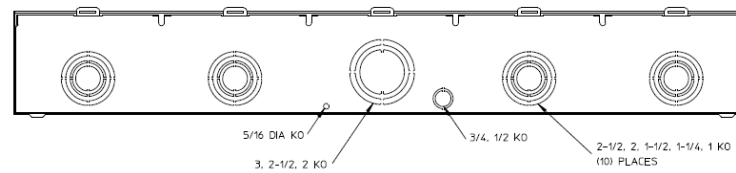
**Front View Interior**



**Notes**

- 1) FINISH: GRAY
- 2) CABINET: 16 GA GALV STEEL
- 3) 200 AMP CONTINUOUS PER POSITION  
600 VAC, 1 PHASE, 3-WIRE  
360 AMP CONTINUOUS (TOTAL) UNIT RATING WITH CU  
310 AMP CONTINUOUS (TOTAL) UNIT RATING WITH AL
- 4) TEMPORARY CARDBOARD METER OPENING COVER PROVIDED.
- 5) MIDWEST LABEL ATTACHED TO THE END OF THE CARTON.
- 6) MIDWEST LOGO LOCATED IN LOWER LEFT HAND CORNER OF THE FRONT.

**Bottom View**



HORIZ GANGED METER SKT-(4) 200A 600V 1P3W G90 N3R 4-TERM  
LARGE HUB OPNG CENTER FEED HORN BYP TRIPLEX GRD

CAT NO	DWG DATE	REV #
UHT4R2352TMEP	04/15/2016	02