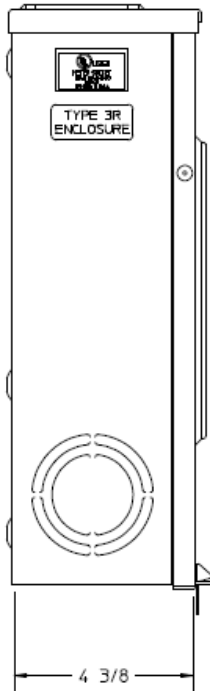
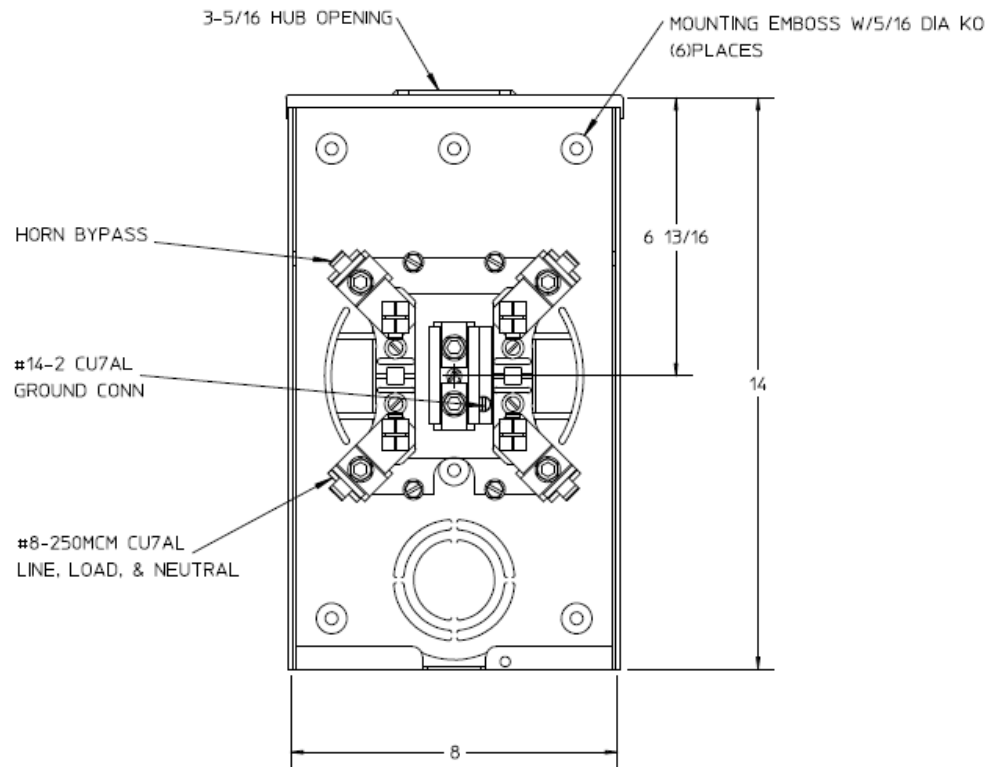


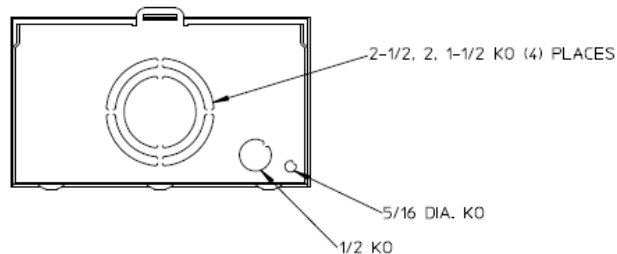
Left Side View



Front View Interior



Bottom View



- 1) FINISH: GRAY
- 2) CABINET: 16GA GALV. STEEL
- 3) 200 AMP CONTINUOUS
600 VAC, 1 PHASE, 3 WIRE
- 4) MIDWEST LABEL ATTACHED TO THE END OF THE CARTON.
- 5) TEMPORARY CARDBOARD METER OPENING COVER PROVIDED
- 6) MIDWEST LOGO LOCATED IN THE LOWER LEFT-HAND CORNER OF THE FRONT.



METER SKT - (1) 200A 600V 1P3W N3R G90 4-TERM SMALL HUB OPNG HORN BYP TRIPLEX GRD TOP/BOTTOM FEED

CAT NO	DWG DATE	REV #
UHTRS202BMEP	04/15/2016	02