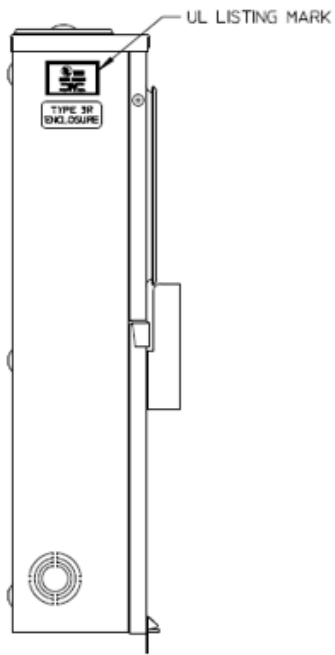
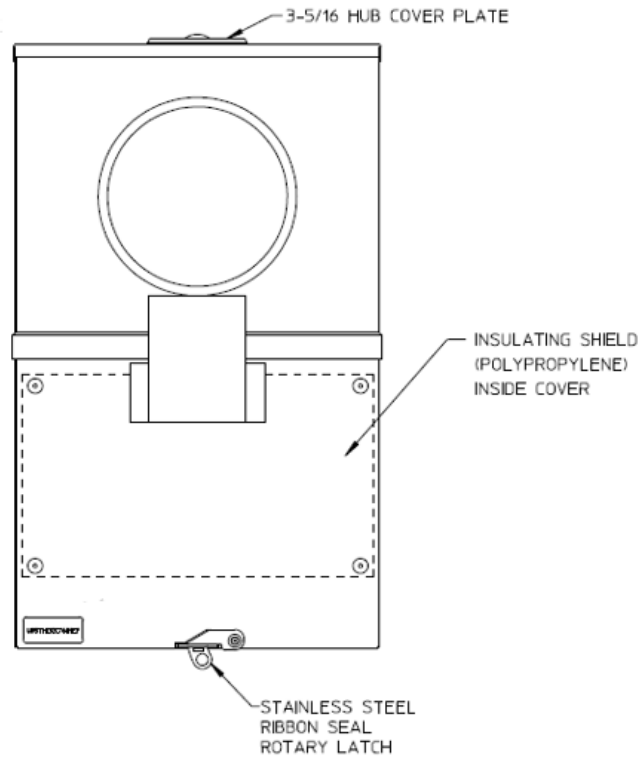


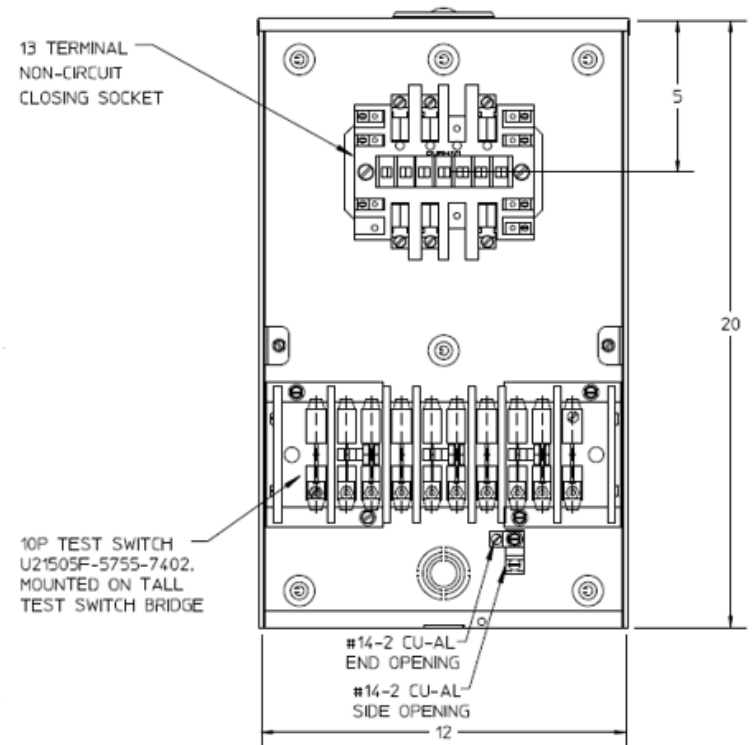
### Left Side View



### Front View Exterior



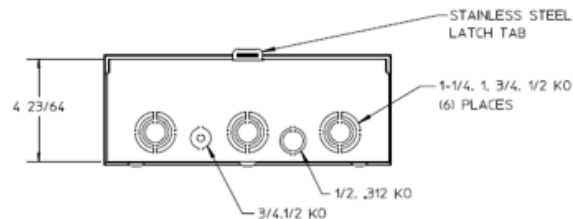
### Front View Interior



### Notes

- 1) CABINET CONSTRUCTED FROM 16 GAUGE G90 GALVANIZED STEEL
- 2) FINISH: GREY
- 3) UNIT RATING: 20 AMP CONTINUOUS 600VAC 3 PHASE 4 WIRE
- 4) UNIT IS PREWIRED FORM 8S/9S PER CUSTOMER SPECS
- 5) UNIT IS SUPPLIED WITH TEMPORARY CARDBOARD METER OPENING COVER
- 6) MIDWEST LABEL ATTACHED TO END OF THE CARTON
- 7) MIDWEST LOGO STAMPED ON LOWER LEFT HAND CORNER OF FRONT
- 8) SAFETY LABEL IS LOCATED ON THE LOWER RIGHT-HAND CORNER OF THE FRONT
- 9) FOR TECO USE ONLY
- 10) STAINLESS STEEL SCREW TYPE SEALING RING MOUNTED ON TOP FRONT

### Bottom View



TRANSFORMER RATED MTR - 20A 13T 3P4W N3R STEEL  
SMALL HUB CVR PLT TOP/BOT FEED TECO APPROVED

CAT NO	DWG DATE	REV #
URSTH132C761MEP	02/23/2017	01