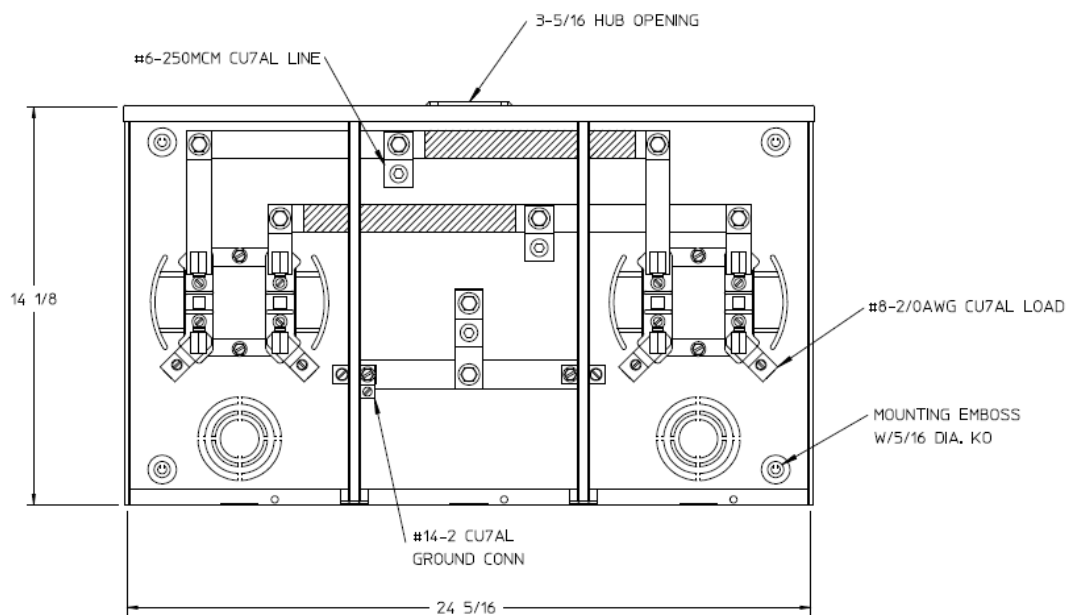
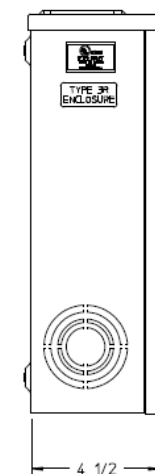


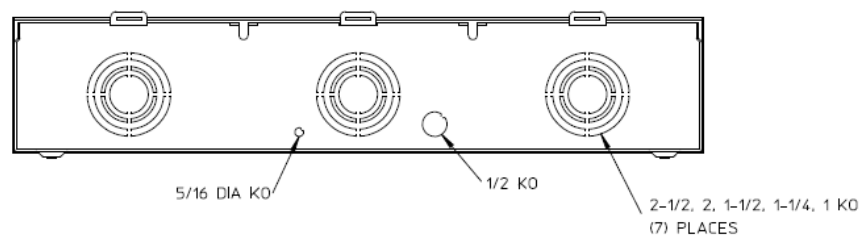
Front View



Side View



Bottom View



Notes

- 1) FINISH: GRAY
- 2) CABINET: 16 GA GALV. STEEL
- 3) 100 AMP CONTINUOUS PER POSITION
600VAC, 1 PHASE, 3-WIRE
200 AMP CONTINUOUS (TOTAL) UNIT RATING
- 4) TEMPORARY CARDBOARD
METER OPENING COVER PROVIDED
- 5) GE LABEL ATTACHED TO THE END OF THE CARTON
- 6) GE LOGO LOCATED IN THE LOWER LEFT-HAND
CORNER OF THE FRONT

GE is a registered trademark used under license from General Electric company.



HORIZ GANGED METER SOCKETS-(2) 100A 600V 1P3W N3R
SMALL HUB OPNG 4-TERM CTR FED G90 TRIPLEX GRD

CAT NO	DWG DATE	REV #
UT2R1121BGE	02/09/2016	01