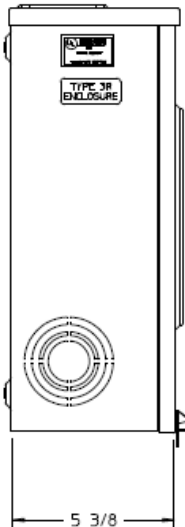
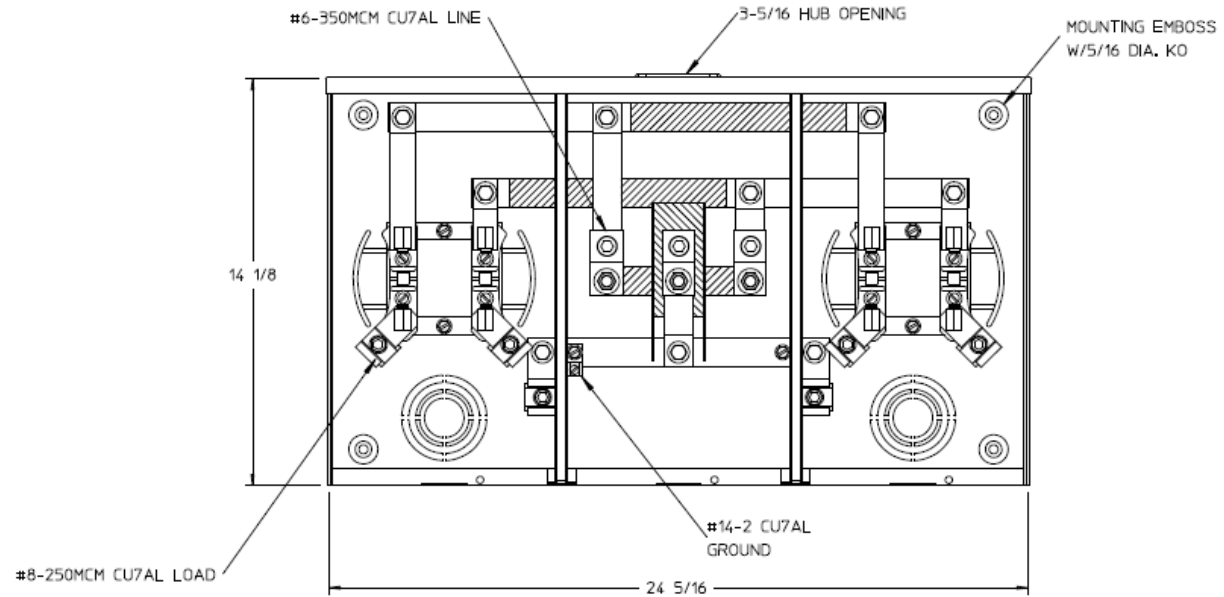


Left Side View



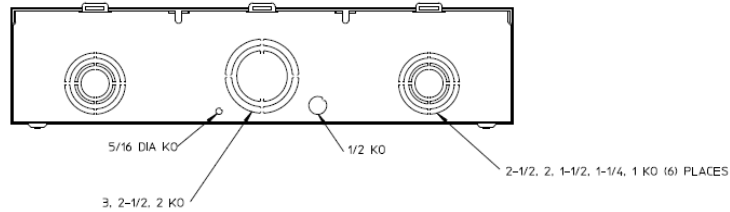
Front View Interior



Notes

- 1) FINISH: GRAY
- 2) CABINET: 16 GA GALV. STEEL
- 3) 150 AMP CONTINUOUS PER POSITION
600VAC, 1 PHASE, 3-WIRE
205 AMP CONTINUOUS (TOTAL) UNIT RATING
- 4) TEMPORARY CARDBOARD METER OPENING COVER PROVIDED
- 5) GE LABEL ATTACHED TO THE END OF THE CARTON
- 6) GE LOGO LOCATED IN THE LOWER LEFT-HAND CORNER OF THE FRONT
- 7) CONNECTORS POSITIONED FOR OVERHEAD FEED

Bottom View



GE is a registered trademark used under license from General Electric company.



HORIZ GANGED METER SOCKETS-(2) 150A 600V 1P3W G90
N3R 4-TERM SMALL HUB OPNG CENTER FEED TRIPLEX GRD

CAT NO	DWG DATE	REV #
UT2R5332BGE	06/08/2016	01