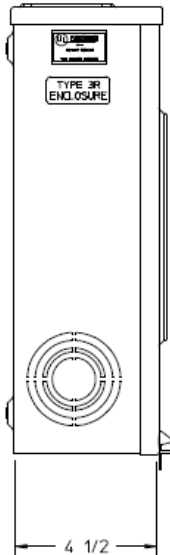
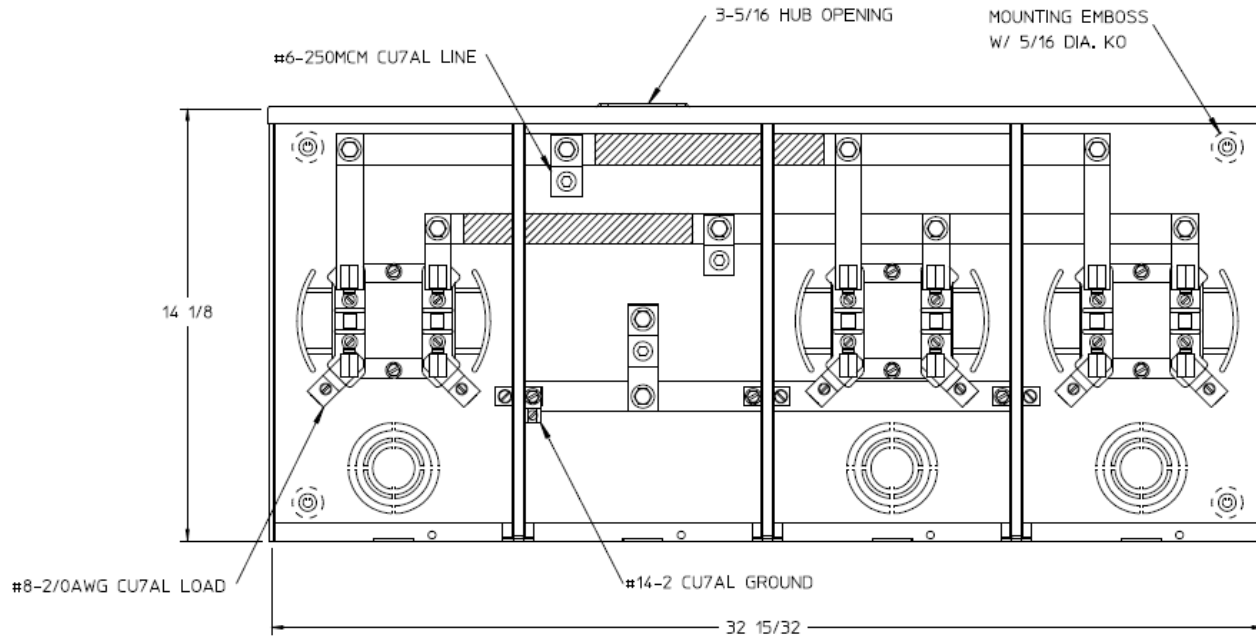


### Left Side View



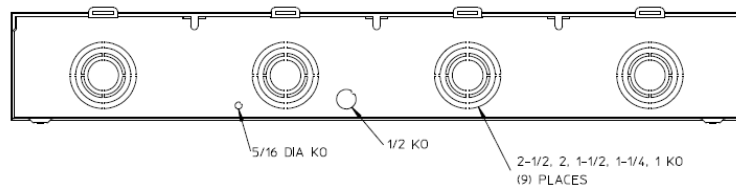
### Front View Interior



### Notes

- 1) FINISH: GRAY
- 2) CABINET: 16 GA GALV. STEEL
- 3) 100 AMP CONTINUOUS PER POSITION  
600 VAC. 1 PHASE, 3-WIRE  
205 AMP CONTINUOUS (TOTAL) UNIT RATING
- 4) GE LABEL ATTACHED TO THE END OF THE CARTON
- 5) TEMPORARY CARDBOARD METER OPENING COVER PROVIDED
- 6) GE LOGO LOCATED IN THE LOWER LEFT-HAND CORNER OF THE FRONT
- 7) CENTRAL MAINE POWER APPROVED

### Bottom View



HORIZ GANGED METER SKTS-(3) 100A 600V 1P3W N3R  
SMALL HUB OPNG 4-TRM CENTER FEED G90 TRIPLEX GRD

CAT NO	DWG DATE	REV #
UT3R1121BGE	04/15/2016	02