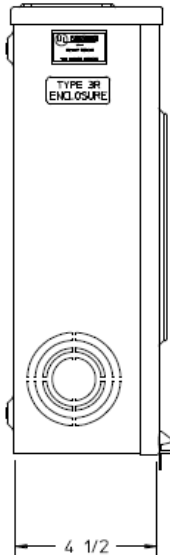
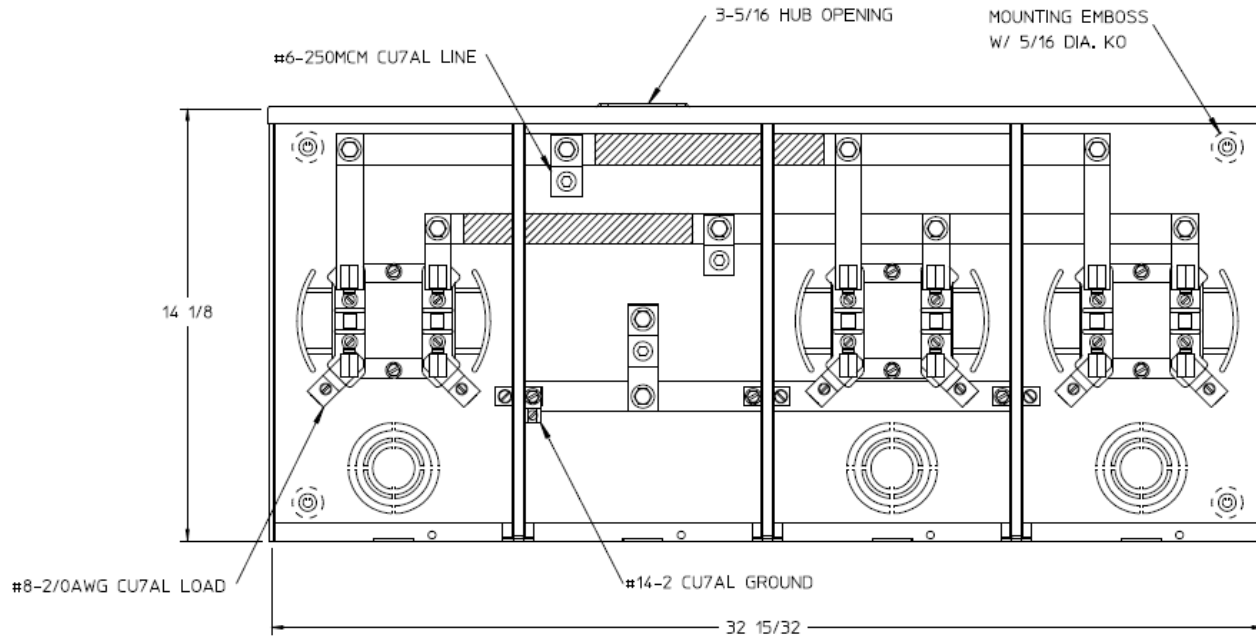


Left Side View



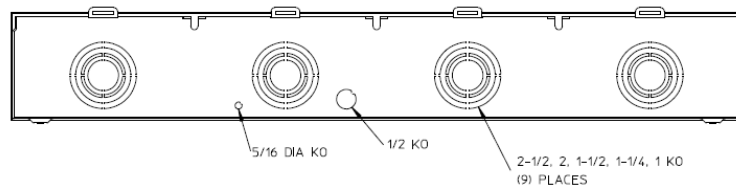
Front View Interior



Notes

- 1) FINISH: GRAY
- 2) CABINET: 16 GA GALV. STEEL
- 3) 100 AMP CONTINUOUS PER POSITION
600 VAC. 1 PHASE, 3-WIRE
- 4) 205 AMP CONTINUOUS (TOTAL) UNIT RATING
- 5) MIDWEST LABEL ATTACHED TO THE
END OF THE CARTON
- 6) TEMPORARY CARDBOARD METER OPENING
COVER PROVIDED
- 7) MIDWEST LOGO LOCATED IN THE
LOWER LEFT-HAND CORNER OF THE FRONT
- 8) CENTRAL MAINE POWER APPROVED

Bottom View



HORIZ GANGED METER SKTS-(3) 100A 600V 1P3W N3R
SMALL HUB OPNG 4-TRM CENTER FEED G90 TRIPLEX GRD

CAT NO	DWG DATE	REV #
UT3R1121BMEP	04/15/2016	02