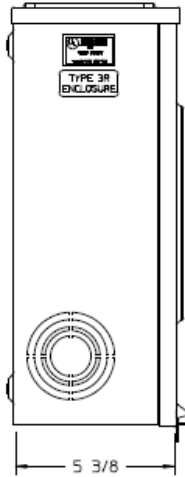
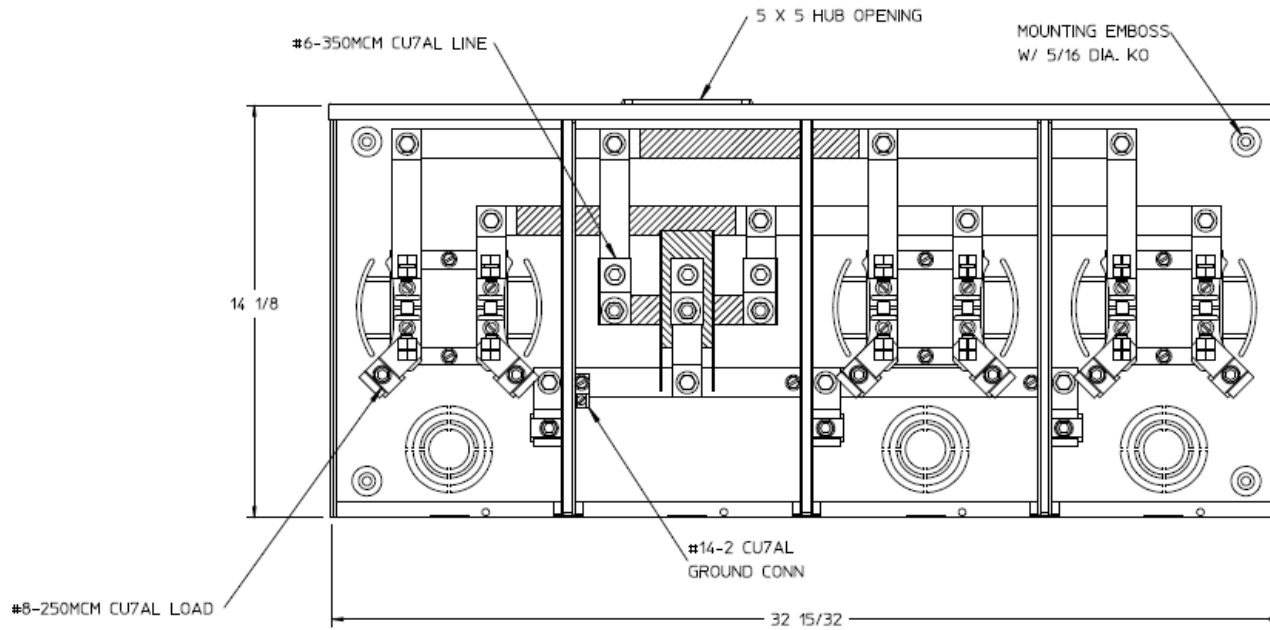


### Left Side View



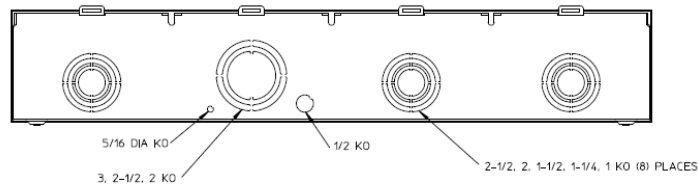
### Front View Interior




### Notes

- 1) FINISH: GRAY
- 2) CABINET: 16 GA GALV. STEEL
- 3) 200 AMP CONTINUOUS PER POSITION  
600 VAC. 1 PHASE, 3-WIRE  
300 AMP CONTINUOUS (TOTAL) UNIT RATING WITH CU  
250 AMP CONTINUOUS (TOTAL) UNIT RATING WITH AL
- 4) GE LABEL ATTACHED TO THE END OF THE CARTON
- 5) TEMPORARY CARDBOARD METER OPENING  
COVER PROVIDED
- 6) GE LOGO LOCATED IN THE LOWER LEFT-HAND CORNER  
OF THE FRONT
- 7) CONNECTORS POSITIONED FOR OVERHEAD FEED
- 8) CENTRAL MAINE POWER APPROVED

### Bottom View



		
HORIZ GANGED METER SKTS-(3) 200A 600V 1P3W G90 N3R 4-TERM LARGE HUB OPNG CENTER FEED TRIPLEX GRD		
<b>CAT NO</b>	<b>DWG DATE</b>	<b>REV #</b>
UT3R2332TGE	04/15/2016	02