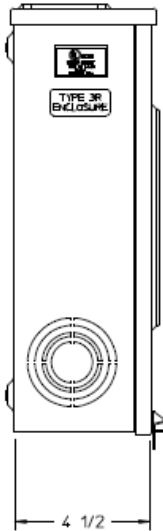
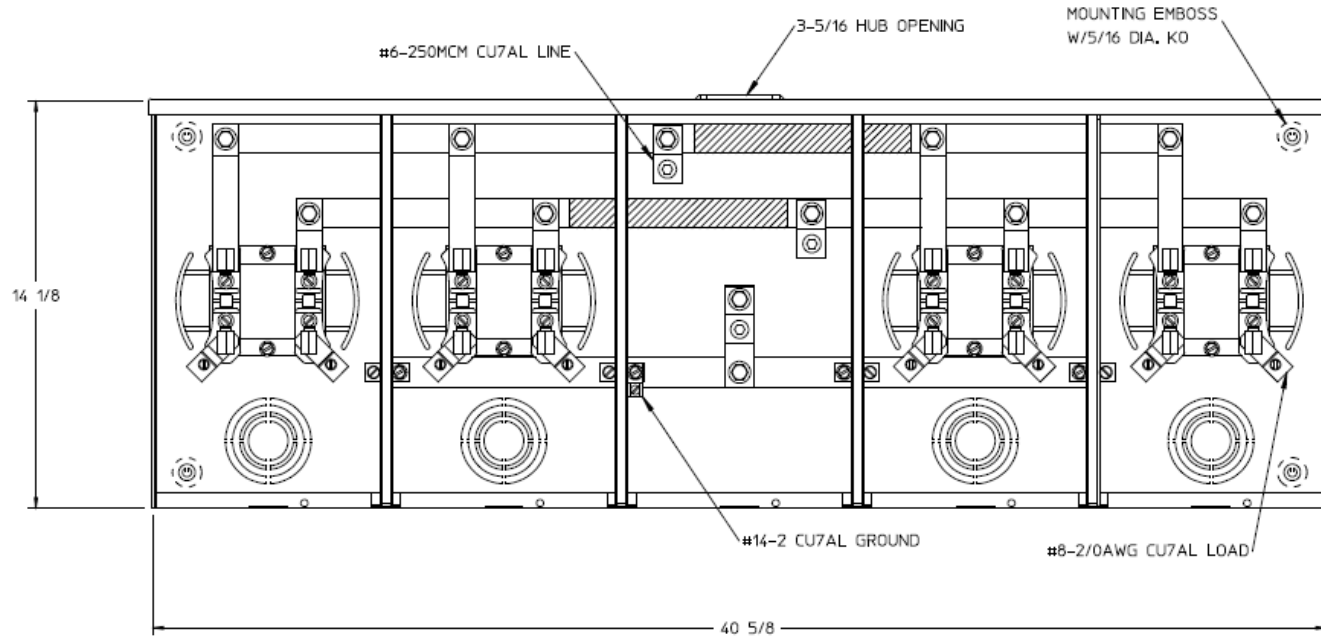


Left Side View



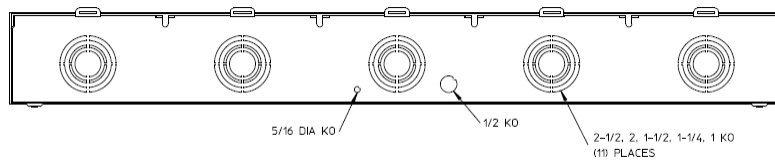
Front View Interior



Notes

- 1) FINISH: GRAY
- 2) CABINET: 16 GA GALV. STEEL
- 3) 100 AMP CONTINUOUS PER POSITION
600VAC, 1 PHASE, 3-WIRE
205 AMP CONTINUOUS (TOTAL) UNIT RATING
- 4) MIDWEST LABEL ATTACHED TO THE
END OF THE CARTON
- 5) TEMPORARY CARDBOARD METER OPENING
COVER PROVIDED
- 6) MIDWEST LOGO LOCATED IN THE
LOWER LEFT-HAND CORNER OF THE FRONT
- 7) CENTRAL MAINE POWER APPROVED

Bottom View



HORIZ GANGED METER SKTS - (4) 100A 600V 1P3W N3R
SMALL HUB OPNG 4-TERM CENTER FEED G90 TPLX GRD

CAT NO	DWG DATE	REV #
UT4R1121BMEP	06/08/2016	01