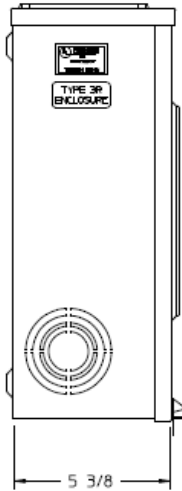
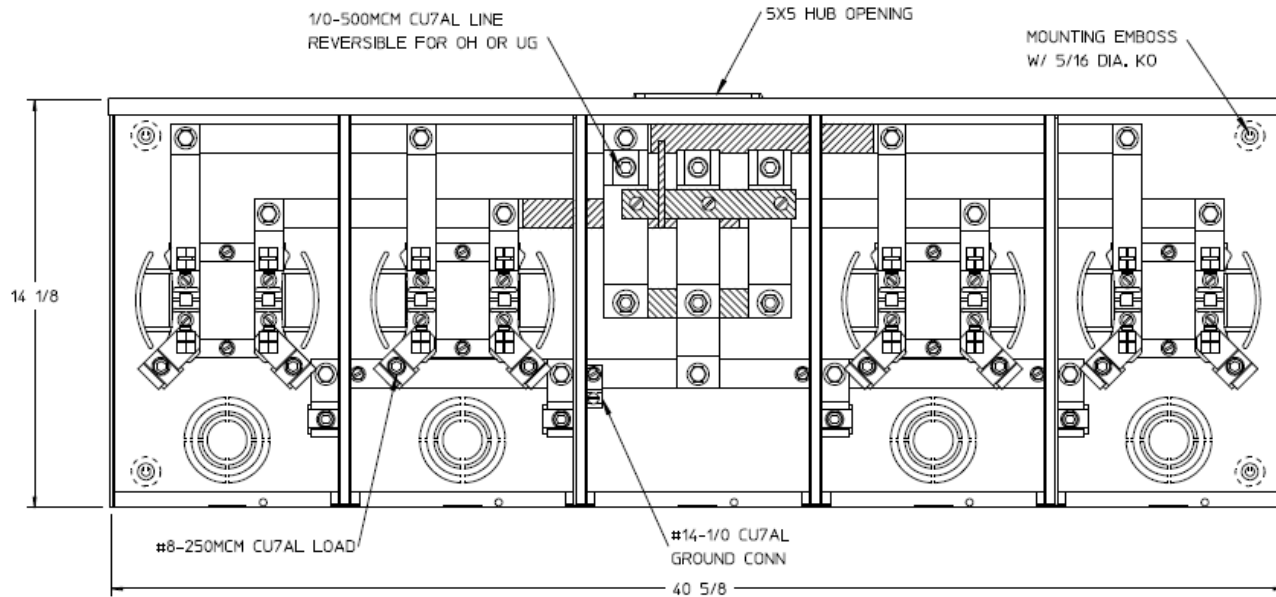


Left Side View



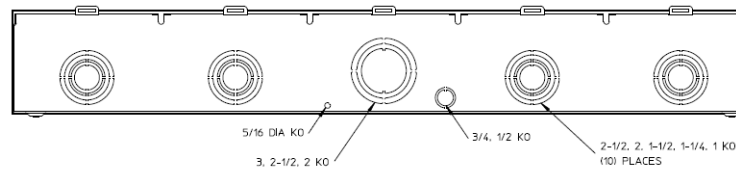
Front View Interior



Notes

- 1) FINISH: GRAY
- 2) CABINET: 16 GA GALV. STEEL
- 3) 200 AMP CONTINUOUS PER POSITION
600A VAC 1 PHASE, 3-WIRE
360 AMP CONTINUOUS (TOTAL) UNIT RATING WITH CU
310 AMP CONTINUOUS (TOTAL) UNIT RATING WITH AL
- 4) MIDWEST LABEL ATTACHED TO THE END OF THE CARTON
- 5) TEMPORARY CARDBOARD METER OPENING COVER PROVIDED
- 6) MIDWEST LOGO LOCATED IN THE LOWER LEFT-HAND CORNER OF THE FRONT
- 7) CENTRAL MAINE POWER APPROVED

Bottom View



HORIZ GANGED METER SOCKETS-(4) 200A 600V 1P3W G90 N3R 4-TERM LARGE HUB OPNG CENTER FEED TPLX GRD

CAT NO	DWG DATE	REV #
UT4R2352TMEP	04/15/2016	02