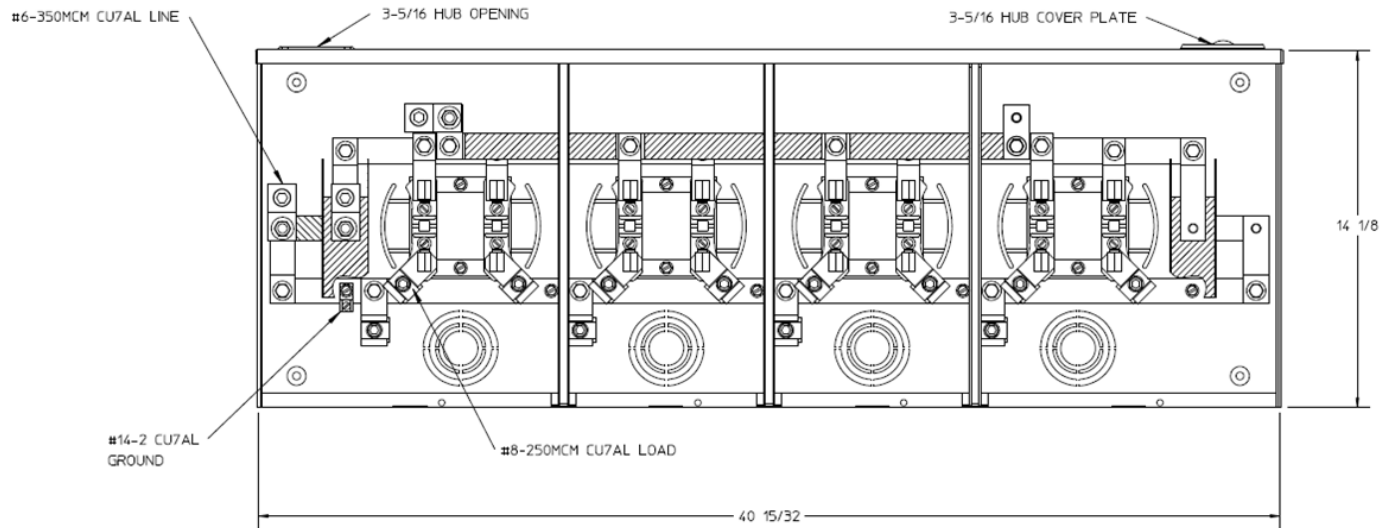
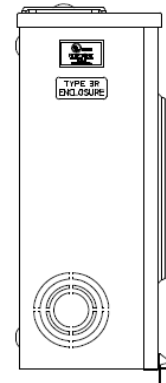


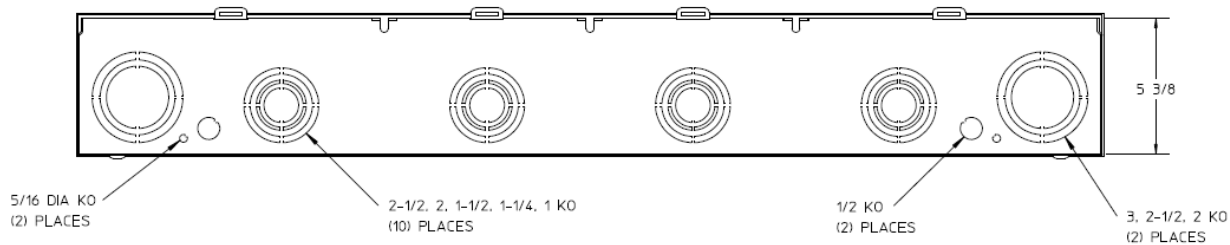
Front View



Side View



Bottom View



Notes

- 1) FINISH: GRAY
- 2) CABINET; 16 GA GALV. STEEL
- 3) 150 AMP CONTINUOUS PER POSITION
300 AMP CONTINUOUS (TOTAL) UNIT
RATING WITH CU
250 AMP CONTINUOUS (TOTAL) UNIT
RATING WITH AL
600 VAC, 1 PHASE, 3-WIRE
- 4) MIDWEST LABEL ATTACHED TO
THE END OF THE CARTON.
- 5) TEMPORARY CARDBOARD METER
OPENING COVERS PROVIDED.
- 6) MIDWEST LOGO LOCATED IN THE
LOWER LEFT-HAND CORNER
OF THE FRONTS.
- 7) CONNECTORS POSITIONED FOR OVERHEAD FEED.



HORIZ GANGED METER SOCKETS - (4) 150A 600V 1P3W
N3R (1) HUB OPNG +(1)HUB CVR PLT 4-TERM END FED G90

| CAT NO | DWG DATE | REV # |
|--------------|------------|-------|
| UT4R5632BMEP | 02/09/2016 | 01 |