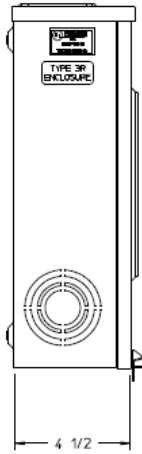
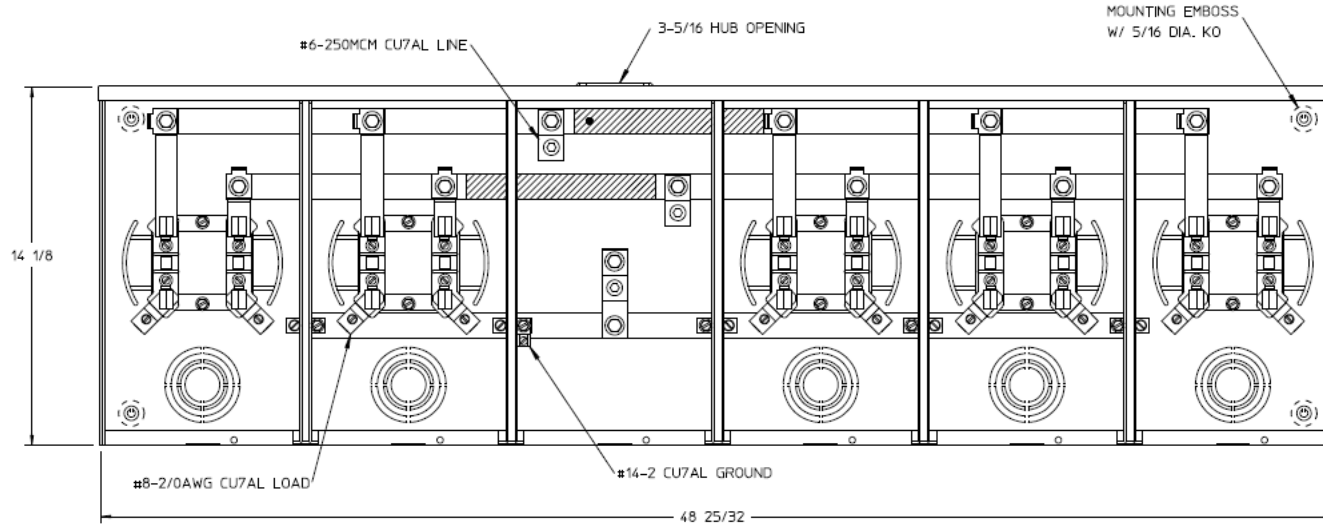


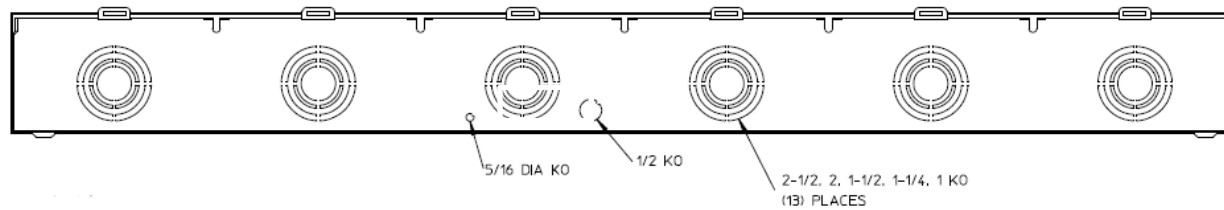
### Left Side View



### Front View Interior



### Bottom View



### Notes

- 1) FINISH: GRAY
- 2) CABINET: 16 GA GALV. STEEL
- 3) 100 AMP CONTINUOUS PER POSITION  
600VAC, 1 PHASE, 3-WIRE  
250 AMP CONTINUOUS (TOTAL) UNIT RATING WITH CU  
205 AMP CONTINUOUS (TOTAL) UNIT RATING WITH AL
- 4) MIDWEST LABEL ATTACHED TO THE  
END OF THE CARTON
- 5) TEMPORARY CARDBOARD METER OPENING  
COVER PROVIDED
- 6) MIDWEST LOGO LOCATED IN THE  
LOWER LEFT-HAND CORNER OF THE FRONT
- 7) CENTRAL MAINE POWER APPROVED



HORIZ GANGED METER SKTS-(5) 100A 600V 1P3W N3R  
SMALL HUB OPNG 4-TRM CENTER FEED G90 TPLX GRD

CAT NO	DWG DATE	REV #
UT5R1121BMEP	06/08/2016	01