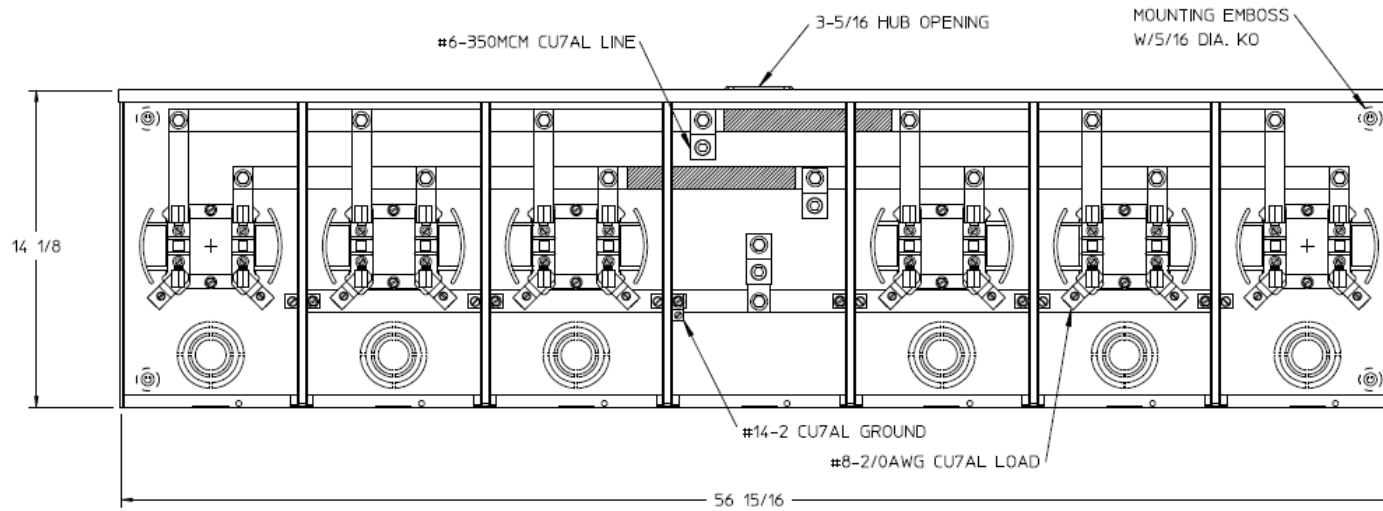
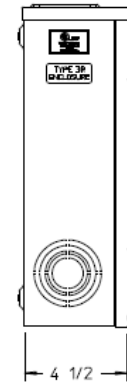


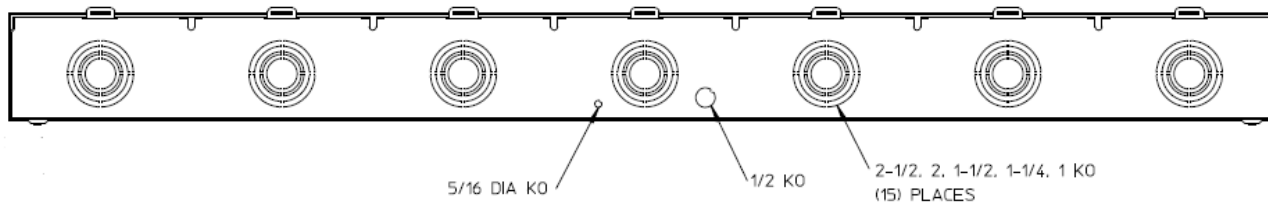
Front View



Side View



Bottom View



Notes

- 1) FINISH: GRAY
- 2) CABINET: 16 GA GALV. STEEL
- 3) 100 AMP CONTINUOUS PER POSITION
600 VAC, 1 PHASE, 3-WIRE
300 AMP CONTINUOUS (TOTAL) UNIT RATING WITH CU
250 AMP CONTINUOUS (TOTAL) UNIT RATING WITH AL
- 4) TEMPORARY CARDBOARD
METER OPENING COVERS PROVIDED
- 5) MIDWEST LABEL ATTACHED TO
THE END OF THE CARTON
- 6) MIDWEST LOGO STAMPED ON LOWER
LEFT HAND CORNER OF FRONTS.



HORIZ GANGED METER SOCKETS - (6) 100A 600V 1P3W
N3R HUB OPENING 4-TERM CENTER FED G90

CAT NO	DWG DATE	REV #
UT6R1131BMEP	02/09/2016	01