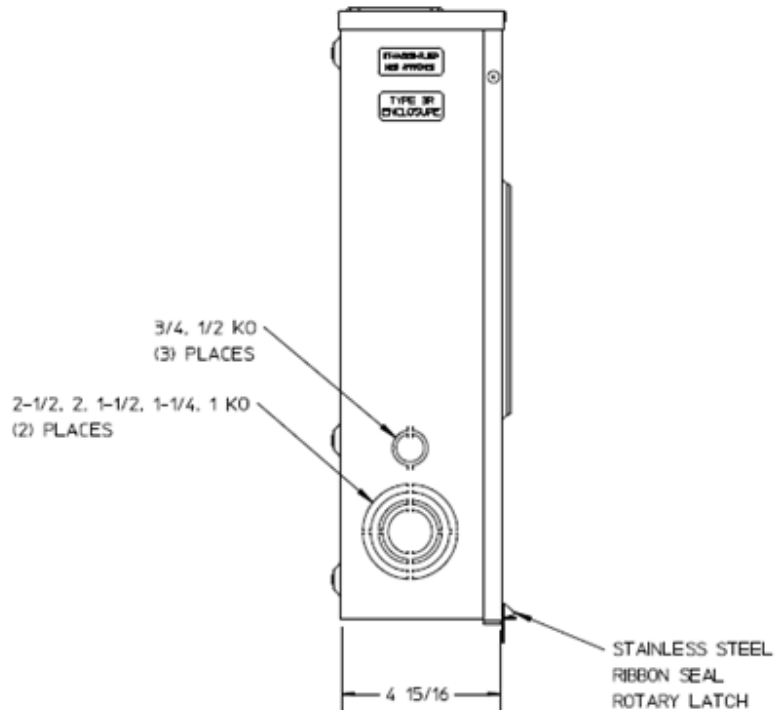
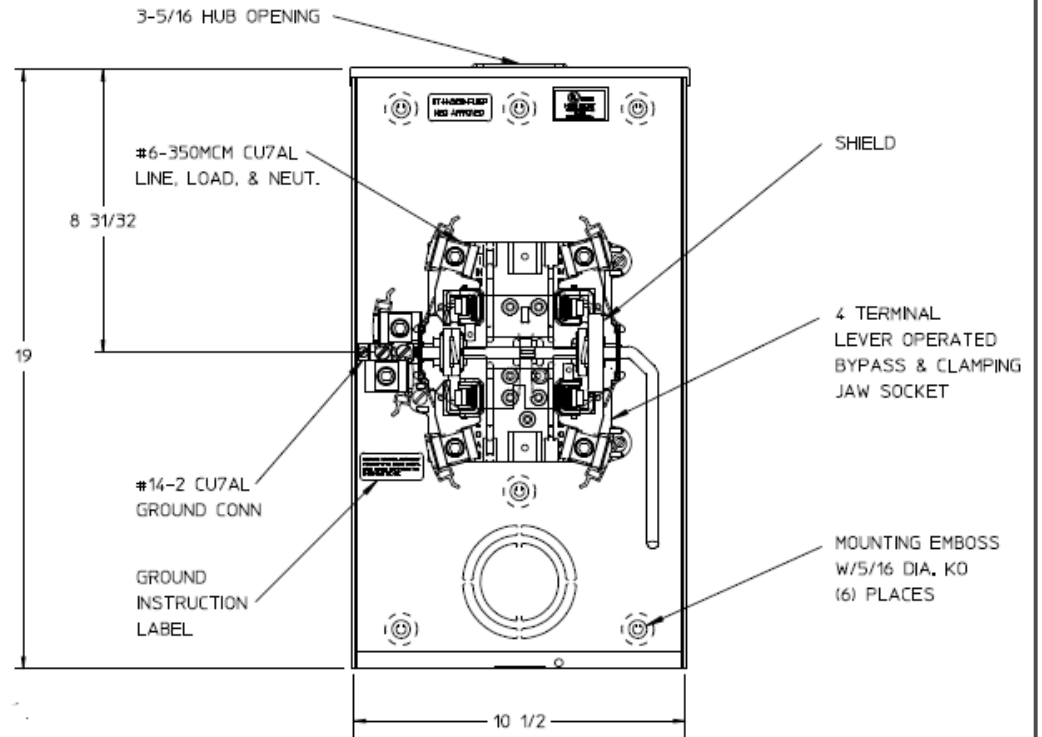


### Side View



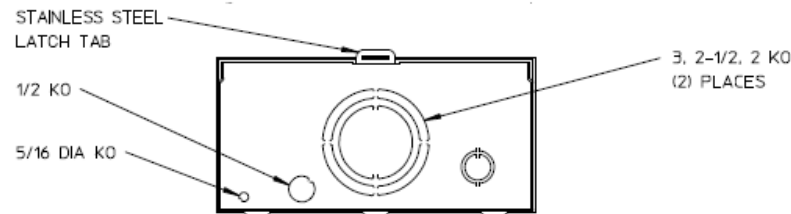
### Front View




### Notes

- 1) FINISH: GRAY
- 2) CABINET: 16 GA GALV STEEL
- 3) 200 AMP CONTINUOUS  
600 VAC, 1 PHASE, 3-WIRE  
200 AMP BYPASS
- 4) TEMPORARY CARDBOARD  
METER OPENING COVER PROVIDED.
- 5) MIDWEST LABEL ATTACHED TO  
THE END OF THE CARTON.
- 6) MIDWEST LOGO STAMPED ON LOWER  
LEFT HAND CORNER OF FRONT.

### Bottom View





METER SKT-1-200A 600V 1P3W G90 N3R 4-TRM SMALL HUB  
OPN TOP/BOT FEED LEVER BYP TPLX GRD MEG APPROVED

CAT NO	DWG DATE	REV #
UTH4203BFLMEP	06/15/2016	01