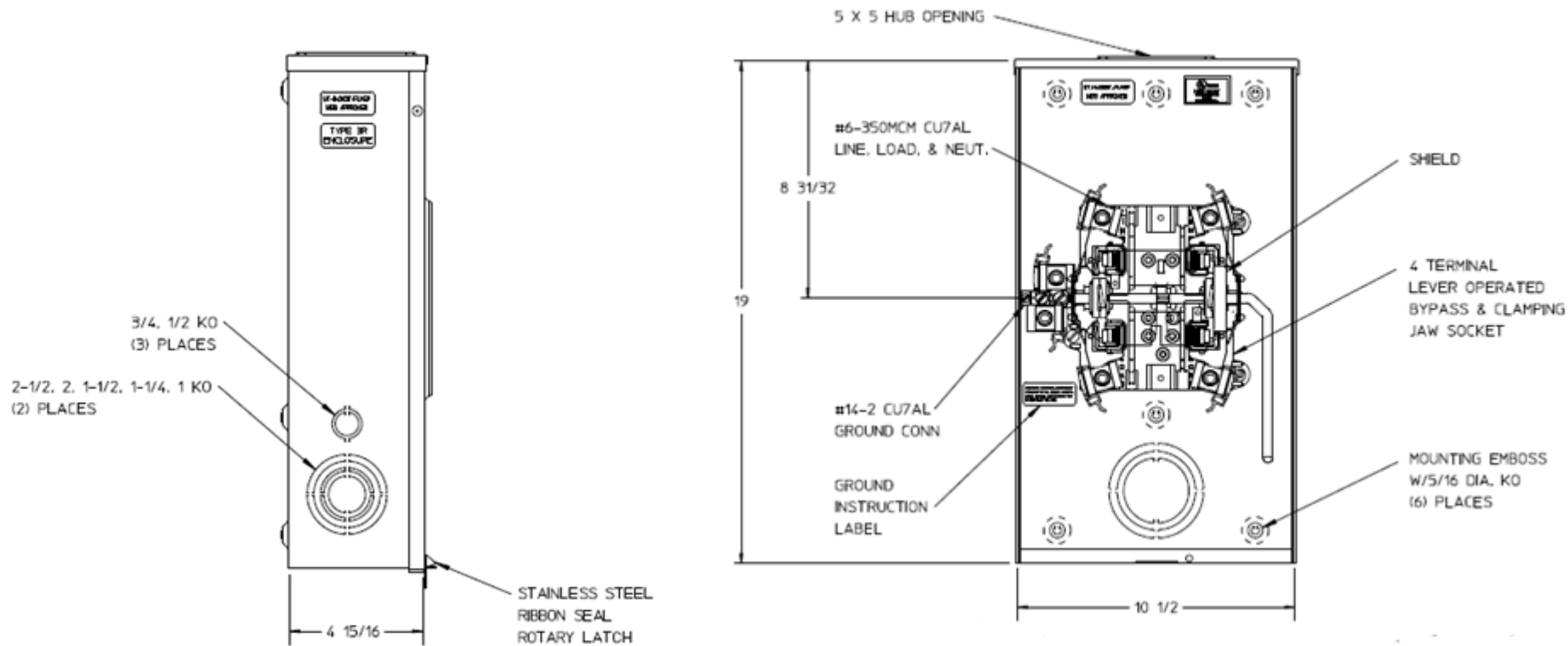


Side View

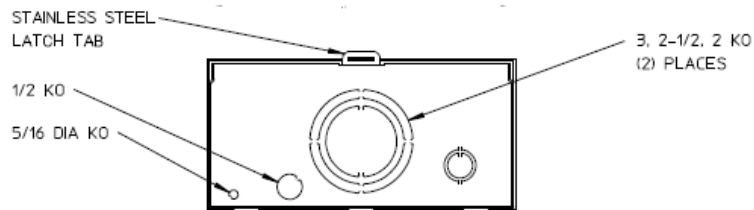
Front View




Notes

- 1) FINISH: GRAY
- 2) CABINET: 16 GA GALV STEEL
- 3) 200 AMP CONTINUOUS
600 VAC, 1 PHASE, 3-WIRE
200 AMP BYPASS
- 4) TEMPORARY CARDBOARD
METER OPENING COVER PROVIDED.
- 5) MIDWEST LABEL ATTACHED TO
THE END OF THE CARTON.
- 6) MIDWEST LOGO STAMPED ON LOWER
LEFT HAND CORNER OF FRONT.

Bottom View





METER SKT-1-200A 600V 1P3W G90 N3R 4-TRM LARGE HUB
OPN TOP/BOT FEED LEVER BYP TPLX GRD MEG APPROVED

CAT NO	DWG DATE	REV #
UTH4203TFLMEP	06/15/2016	01