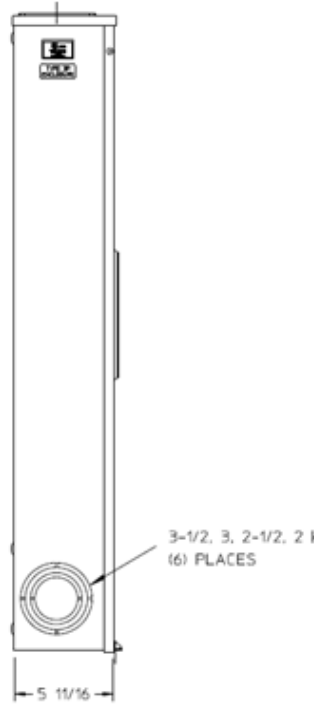
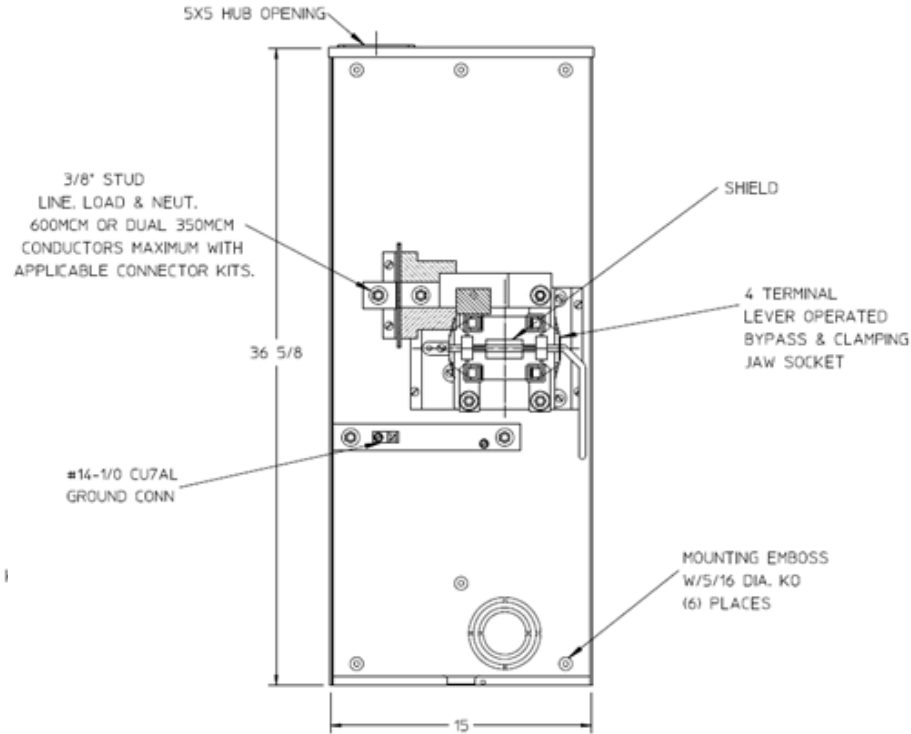


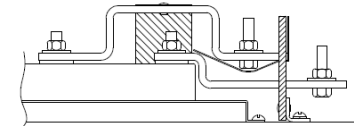
Left Side View



Front View Interior



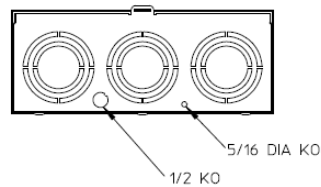
Line Bus Detail




Notes

- 1) FINISH: GRAY
- 2) CABINET: 16 GA GALV. STEEL
- 3) 320 AMP CONTINUOUS
600VAC, 1 PHASE, 3-WIRE
320 AMP BYPASS
- 4) TEMPORARY CARDBOARD
METER OPENING COVER PROVIDED
- 5) GE LABEL ATTACHED TO THE END OF THE CARTON
- 6) GE LOGO LOCATED IN THE LOWER LEFT-HAND CORNER OF THE FRONT
- 7) CENTRAL MAINE POWER APPROVED

Bottom View



		
METER SOCKET-(1) 320A 600V G90 N3R 4-TERMINAL LARGE HUB OPNG LEVER BYP TOP/BOT FEED TRIPLEX GROUND		
CAT NO	DWG DATE	REV #
UTH4330TGE	04/15/2016	02