

Front View

Side View

5 X 5 HUB OPENING

#4-600MCM CU7AL
LINE & LINE NEUTRAL
ANTI ROTATION BRACKET

SHIELD

4 TERMINAL
LEVER OPERATED
BYPASS & CLAMPING
JAW SOCKET

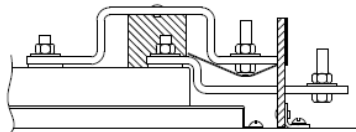
#14-1/0 CU7AL
GROUND CONN

DUAL #6-350MCM CU7AL
LOAD & LOAD NEUTRAL

MOUNTING EMBOSS
W/ 5/16 DIA. KO
(6) PLACES

3-1/2, 3, 2-1/2, 2 KO
(6) PLACES

Line Bus Detail



36 5/8

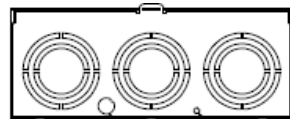
15

5 11/16

Notes

- 1) FINISH: GRAY
- 2) CABINET: 16 GA GALV STEEL
- 3) 320 AMP CONTINUOUS, 600 VAC, 1 PHASE, 3 WIRE, 320 AMP BYPASS
- 4) GE LABEL ATTACHED TO THE END OF THE CARTON
- 5) TEMPORARY CARDBOARD METER OPENING COVER PROVIDED
- 6) GE LOGO STAMPED ON LOWER LEFT HAND CORNER OF THE FRONT

Bottom View



1/2 KO

5/16 DIA KO



METER SKT-(1) 320A 600V 1P3W G90 N3R 4-TERM
LEVER BYP LARGE HUB OPNG TPLX GRD TOP FEED

CAT NO	DWG DATE	REV #
UTH43369TGE	02/10/2016	01