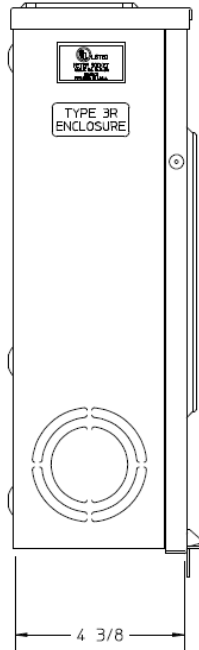
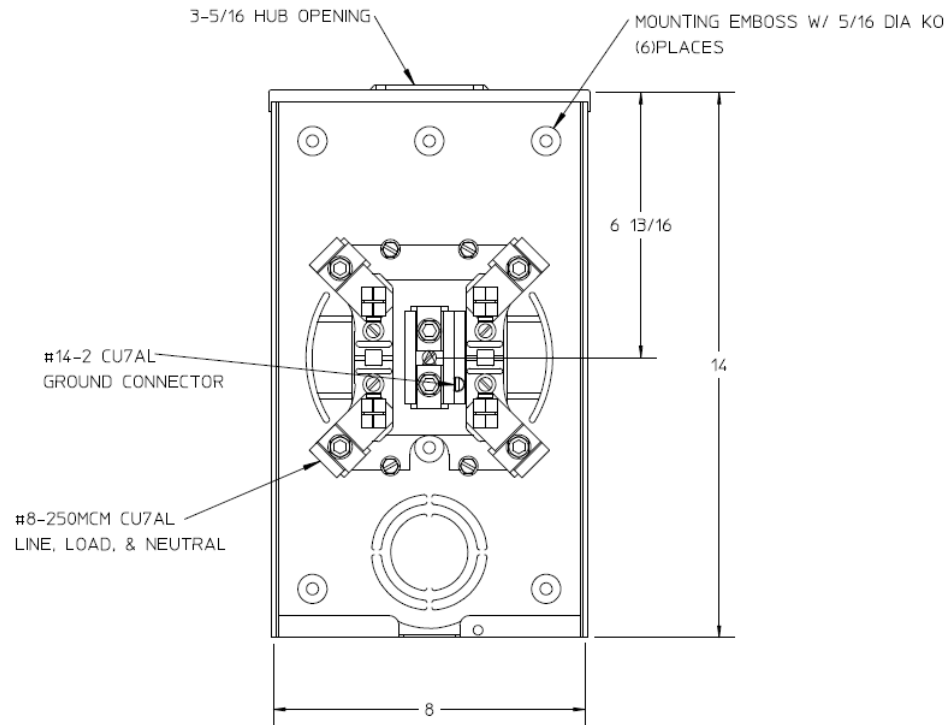


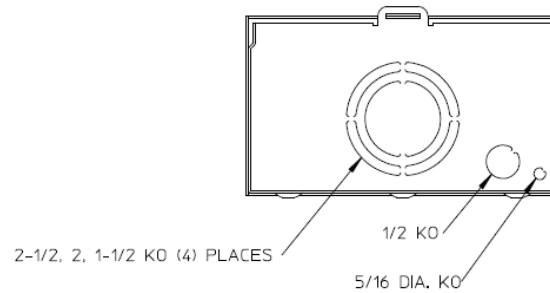
Left Side View



Front View Interior



Bottom View



Notes

- 1) FINISH: GRAY
- 2) CABINET: 16 GA GALV. STEEL
- 3) 200 AMP CONTINUOUS
- 4) 600VAC, 1 PHASE, 3-WIRE
- 5) TEMPORARY CARDBOARD
- 6) METER OPENING COVER PROVIDED
- 7) MIDWEST LABEL ATTACHED TO THE END OF THE CARTON
- 8) MIDWEST LOGO LOCATED IN THE LOWER LEFT-HAND CORNER OF THE FRONT
- 9) CENTRAL MAINE POWER APPROVED



METER SOCKET-(1) 200A 600V 1P3W G90 N3R 4-TERM
SMALL HUB OPENING TRIPLEX GROUND TOP/BOT FEED

CAT NO	DWG DATE	REV #
UTRS202BMEP	04/15/2016	02