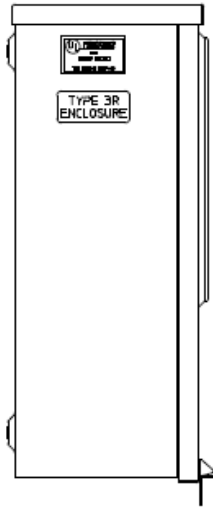
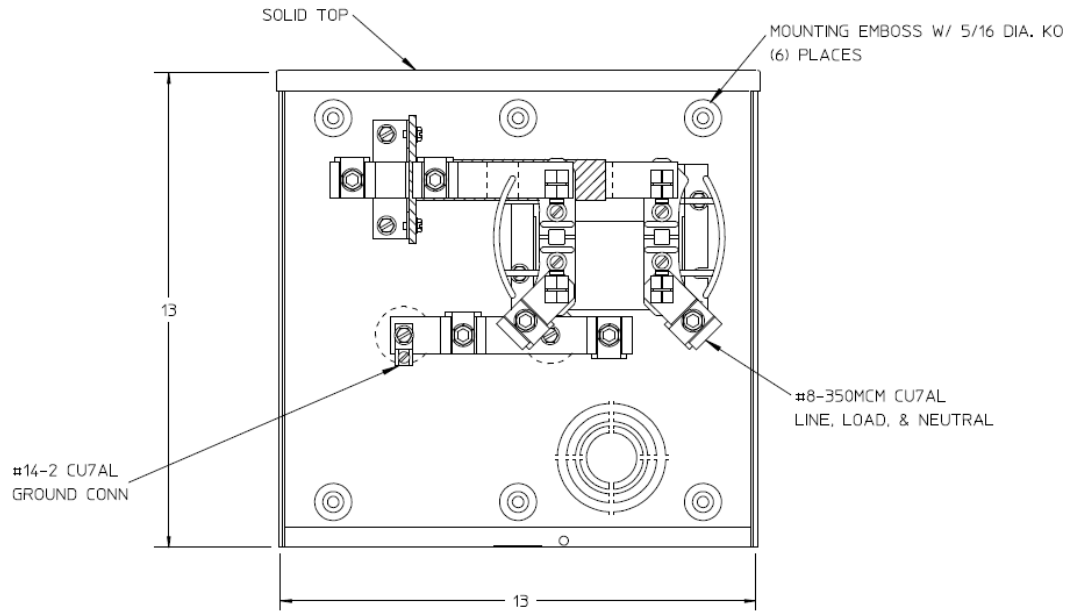


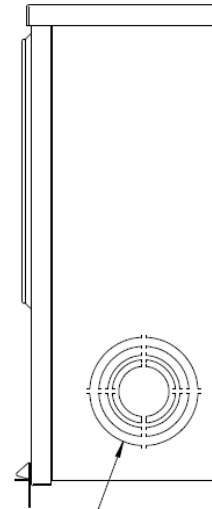
Left Side View



Front View Interior

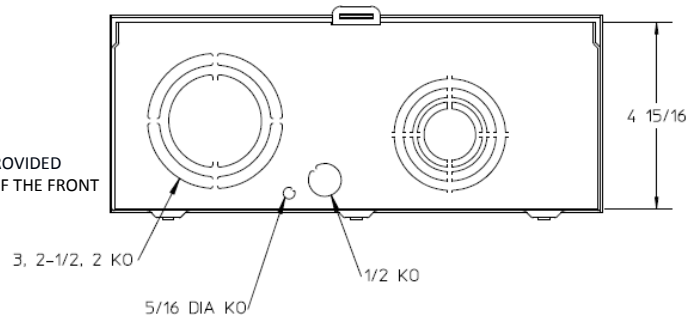


Right Side View




2-1/2, 2, 1-1/2, 1-1/4, 1 KO (3) PLACES

Bottom View



Notes

- 1) FINISH: GRAY
- 2) CABINET: 16 GA GALV STEEL
- 3) 200 AMP CONTINUOUS, 600 VAC, 1 PHASE, 3 WIRE
- 4) GE LABEL ATTACHED TO THE END OF THE CARTON
- 5) TEMPORARY CARDBOARD METER OPENING COVER PROVIDED
- 6) GE LOGO STAMPED ON LOWER LEFT HAND CORNER OF THE FRONT

		
METER SOCKET-(1) 200A 600V 1P3W G90 N3R 4-TERM SOLID TOP TRIPLEX GROUND BOTTOM FEED		
CAT NO	DWG DATE	REV #
UTRS223AGE	04/15/2016	02