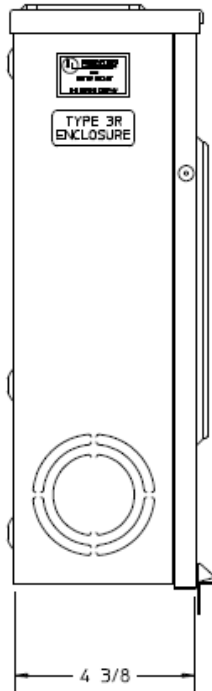
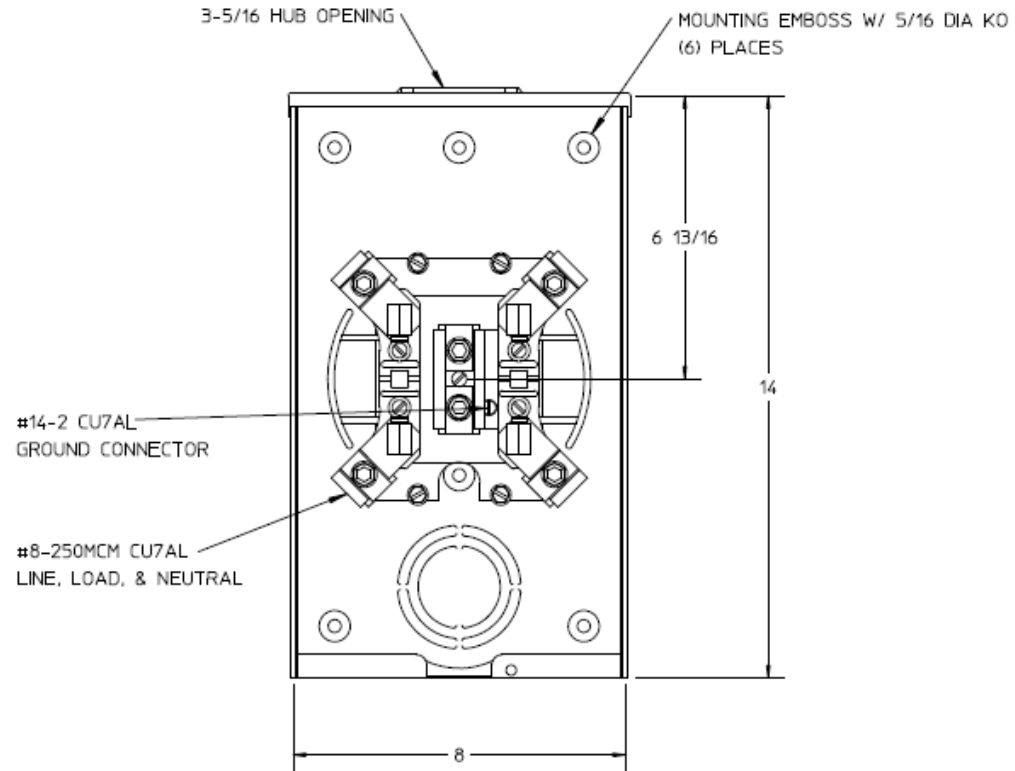


**Left Side View**



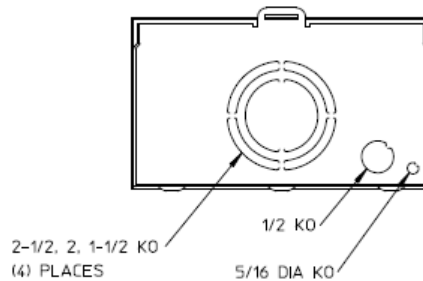
**Front View Interior**



**Notes**

- 1) FINISH: GRAY
- 2) CABINET: 16 GA GALV. STEEL
- 3) 150 AMP CONTINUOUS, 600 VAC, 1 PHASE, 3 WIRE
- 4) TEMPORARY CARDBOARD METER OPENING COVER PROVIDED
- 5) MIDWEST LABEL ATTACHED TO THE END OF THE CARTON
- 6) MIDWEST LOGO LOCATED IN THE LOWER LEFT-HAND CORNER OF THE FRONT

**Bottom View**



METER SOCKET-(1) 150A 600V 1P3W G90 N3R 4-TERM SMALL HUB OPNG TRIPLEX GROUND TOP/BOTTOM FEED

CAT NO	DWG DATE	REV #
UTRS502BMEP	04/15/2016	02